

QUALITY

Winnebago RVs are designed and built around you, with superior craftsmanship, advanced manufacturing technologies and steel-focused construction to enhance safety and reliability.

INNOVATION

From groundbreaking RVs to game-changing features to the spacious floorplans made possible by our SmartSpace™ design, our heritage is unrivaled for continuous industry firsts in vehicle technology and design.

SERVICE

Our carefully chosen dealers are supported by factory training and our advanced parts supply system, while owners benefit from excellent real-world customer support as well as 24/7 access to online technical information.

BELONGING


Winnebago owners are a connected community – some of the friendliest, most knowledgeable and welcoming RVers you'll find anywhere.





Discover More Freedom in the Forza.

Feeling the pull of a diesel pusher?
The Winnebago Forza® delivers all the power,
performance upgrades and enhanced ride
quality you're looking for, along with the
versatility, convenience and value to take
your adventures to the next level.



Set Your
Sights on Your
Next Great
Adventure.



Purpose Built. Power to Spare.

The Forza combines the rugged Freightliner® XCS chassis with our signature steel SuperStructure® for uncompromising ride quality, while the 340-hp Cummins® ISB engine delivers superior towing power.

More Room to Move

Choose from three spacious and remarkably versatile floorplans with up to 3 slideouts, 2 baths and accommodations for up to 8 overnight guests. Engineered to entertain, the Forza offers an expansive living area, available theater seating and plentiful storage.

A Whole New Point of View

Superior comfort meets next-gen technology inside the Forza cab. From multi-adjustable recline and fixed lumbar support to full Apple CarPlay® and USB/HDMI connectivity, there is zero compromise at the wheel. The OptiView™ dash system includes fully integrated gauges, touch-screen controls and a 360° camera system.

Radio/Rearview Monitor System

With a 9" LCD color touch screen, handheld remote, rear color camera, Sirius-XM®-ready, USB input, HDMI/MHL connectivity, AppleCarPlay®, and AndroidAuto™ you have entertainment and premium features available at your fingertips.



A Beauty, More than Skin-Deep.

With more sophisticated styling as well as a number of exterior updates, the newest Forza shines in any environment. Available in lengths from 35'6" to 39'10", the Forza offers plenty of secure, easily accessible storage, plus an array of features to make every stay more comfortable and enjoyable.

- 1** Premium high-gloss sidewalls, highlighted with new exterior full-body paint for a more contemporary look.
- 2** Up to 228 cu. ft. of lighted, heated and lined exterior storage, including a large pass-through storage bay. Side-hinged doors and rotary-style latches provide a more secure closure.
- 3** 10,000-lb. drawbar trailer hitch with 500-lb. maximum vertical tongue weight and 7-pin trailer wiring.
- 4** Stylish aluminum wheels reduce unsprung weight versus steel wheels.
- 5** Shorter (12") exterior height to improve crosswind stability while still allowing 6'8" ceilings inside.
- 6** Powered patio awning with LED lighting, supplemented by an additional powered awning with LED lighting (34T) or separate powered awning shielding the entrance door (36H, 38W).
- 7** Full-perimeter ground effects lighting package for soft ambient lighting.
- 8** Exterior compartment with 110vac power, TV antenna and 3-way A/V receptacles, ready for the available exterior entertainment center and its 32" HDTV.
- 9** PetPal leash tie down.



Freightliner® XCS Chassis

1 Cummins® ISB 6.7L 340HP “Clean Air Diesel” Engine

Delivers 700-lb. torque for hill-climbing power when you need it.

2 Allison® 2500M 6-Speed Automatic Transmission

Located on DriveTech's right hand column-mounted control.

3 Rear Axle

Incorporates proprietary machined gears for a smoother, quieter ride.

4 Sachs® Shocks

Enhance control while delivering a smooth ride.

5 Neway® Front Air Suspension

Soaks up the bumps for a comfortable ride and consistent handling.

6 Freightliner® V-Ride® Rear Suspension

Superior roll stability and predictable handling in all road conditions.

7 4-Wheel ABS Anti-Lock Air Brakes

Provides safe stopping power.

8 Exhaust Safe Brake

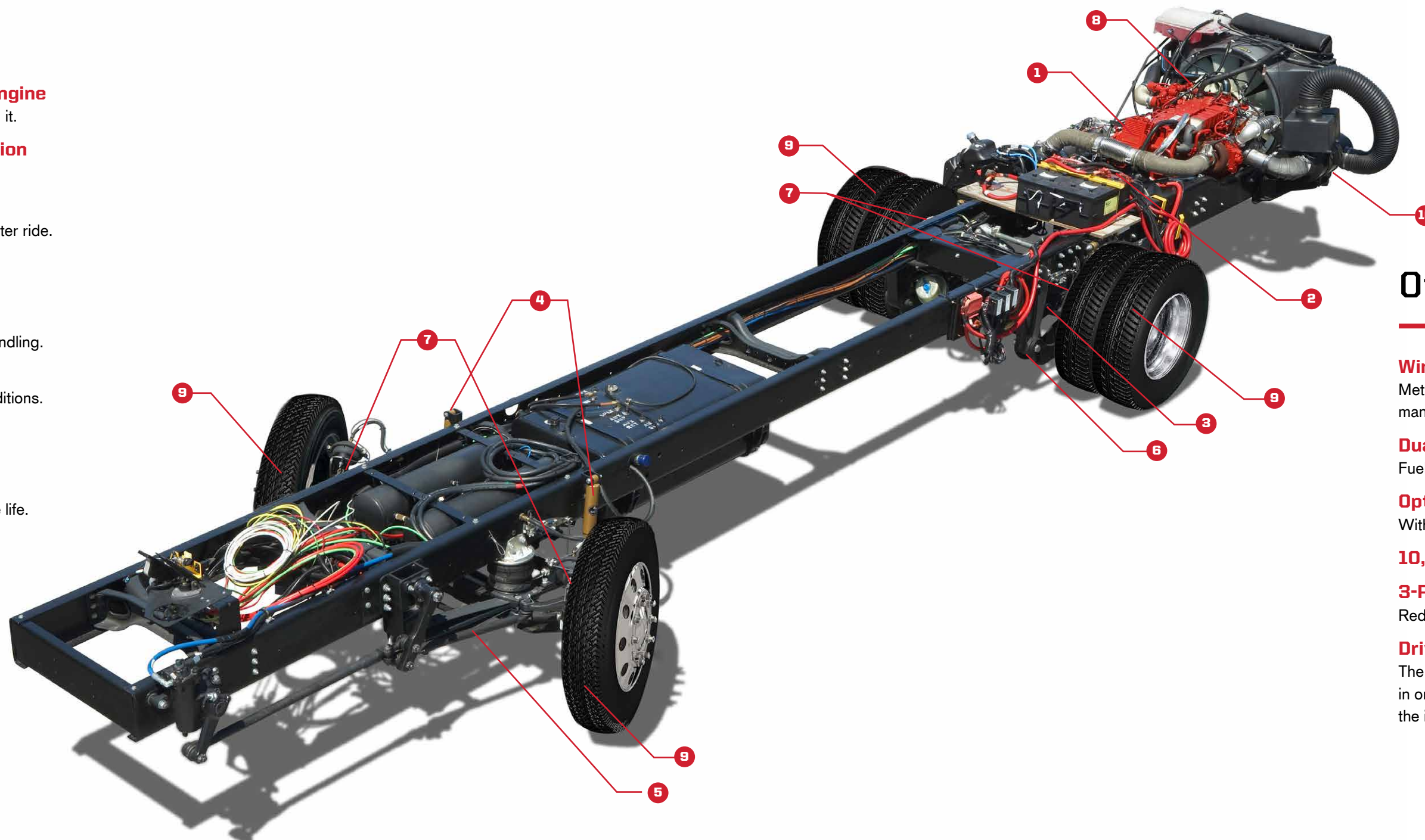
Uses compression to slow the coach, promoting longer brake life.

9 Michelin® Tires

And polished aluminum wheels.

10 Freightliner® BrakeSync

Factory-installed, factory-warranted supplemental braking system for your tow vehicle.



Other Key Features

Winnebago Industries SuperStructure®

Metal framework integrated with the XCS chassis delivers a well-mannered ride while providing up to 228 cu. ft. of exterior storage.

Dual-Fill Fuel Tank

Fuel up on whichever side of your Forza is more convenient.

OptiView™ Digital Instrument Cluster

With adjustable brightness, anti-glare display and easy-to-read interface.

10,000-lb. Trailer Hitch

3-Point Engine Mounting

Reduces engine vibration.

DriveTech Customizable System

The first RV driving system to maximize safety by putting every command in one easy-to-reach location, creating an automotive-like feel and setting the industry standard for luxury RV driving.

Step Into Your New Comfort Zone: Outside the Forza.

With intelligent exterior storage and space-extending built-ins, the Forza helps you pack more into every outdoor moment.

StoreMore

Up to 228 cu. ft. of integrated exterior storage ensures nothing gets left off your packing list.

Stay Fresh

Exterior wash station keeps your gear clean and ready for tomorrow.

Turn Heads

The dynamic graphics package is a real head-turner from highway to campsite, sun up to sundown.

Create More Space

The innovative powered armless awnings ensure you and the entire crew have it made in the shade.

Take it Outside

With ground effects lighting to help set the mood, the available exterior entertainment system turns the patio area into the ultimate outdoor entertainment space.





Fully Equipped. To Far Exceed.

Binge Ready

The 50" HDTV, along with options for theater seating, sofa, or sofa/sleeper, make any night perfect for movie night in.

The Right Touch

Ultrafabrics® furnishings and plank flooring deliver an upscale feel to the living spaces, highlighted throughout with well-appointed LED ceiling lights.

Dine In. Roll Out.

Generous storage, Corian® countertops and standard 2-door residential-style refrigerator make an uncompromising galley experience.

Details Done Well

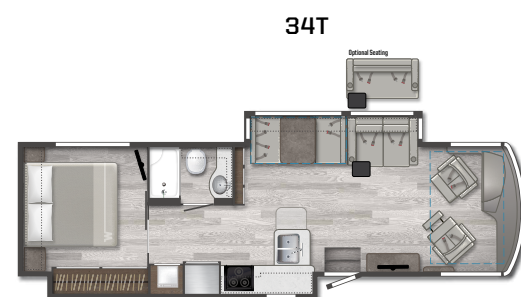
With a spacious shower (2 in the 38W) with textured glass door, skylight, and plenty of storage for linens, the bath and available washer/dryer are intelligently integrated into each floorplan.

Hello, Good Nights

Using the control panel, the 34T standard king bed (optional 36H) adjusts side-to-side to provide for walkaround space on either side of the bed and the optional StudioLoft™ bed upfront, along with bunk beds (38W) and room-divider curtain, the Forza comfortably accommodates up to 8 overnight guests. And everyone will rest easier with the wireless phone chargers built into each nightstand.



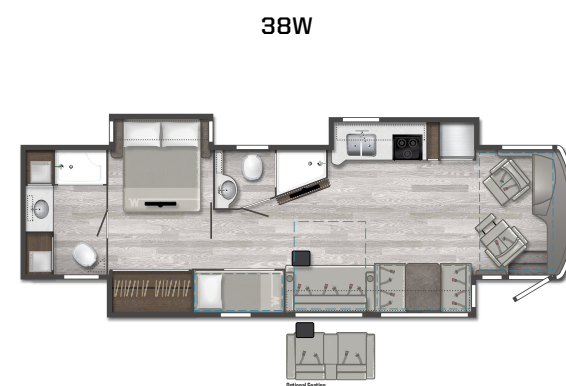
Floorplan Shown: 34T



34T



36H



38W

Dotted lines denote overhead storage area. Blue dashed lines denote sleeping areas. Floorplans are representations only and are subject to change. Please contact a certified Winnebago dealer for more information.



WINNEBAGO

FORZA / Specifications

WEIGHTS & MEASURES	34T	36H	38W
Exterior Length	35'6"	38'2"	39'11"
Exterior Height¹	12'	12'	12'
Exterior Width²	8'5.5"	8'5.5"	8'5.5"
Exterior Storage³ (cu. ft.)	153	222	228
Awning Length	17'2"	11'9"	20'
Interior Height	6'8"	6'8"	6'8"
Interior Width	8'0.5"	8'0.5"	8'0.5"
Freshwater Tank Capacity⁴ (gal.)	84	84	100
Water Heater Capacity (gal.)	10	10	10
Holding Tank Capacity - Black/Gray⁴ (gal.)	48/54	48/44	49/48A/51B
LP Capacity⁵ (lbs.)	97.29	97.29	97.29
Fuel Capacity (gal.)	90	90	90
GCWR⁶ (lbs.)	33,000	33,000	33,000
GVWR (lbs.)	26,000	27,910	29,410
GAWR - Front (lbs.)	10,410	10,410	10,410
GAWR - Rear (lbs.)	17,500	17,500	19,000
Wheelbase	208"	236"	260"
Sleepers⁷	5	6	8

A Master Bathroom B Mid-Coach Bathroom

Chassis

26,000-lb. Freightliner® XCS chassis, Allison® 6-speed automatic 2500 MH transmission (34T)
27,910-lb. Freightliner® chassis, Allison® 6-speed automatic 2500 MH transmission (36H)
29,410-lb. Freightliner® chassis Allison® 6-speed automatic 2500 MH transmission (38W)
340-hp Cummins® ISB 6.7L
NeWay® front air suspension
V-Ride® rear air suspension
OptiView™ dash digital instrument panel cluster
DriveTech driving system
Tire pressure monitoring system
160-amp. alternator
Air brakes w/ABS
Engine exhaust brake
Rear cap engine intake screen
Automatic hydraulic leveling jacks
7-pin trailer wiring
Trailer hitch⁸ 10,000-lb. drawbar/500-lb. maximum vertical tongue weight
Stylized aluminum wheels
Slideroom lock system
Information display center
SuperStructure construction design by Winnebago includes interlocking roof/sidewall/floor joints, laser-cut tubing, solid structural aluminum framework, thermo-panel sidewalls, embedded steel backing, and e-coating to protect critical steel components.

Cab Conveniences

Adjustable cab seats swivel, armrests, fixed lumbar support and multi-adjustable recline
6-way power assist seat pedestal driver & passenger seat
3-point seat belts
Radio/Rearview monitor system w/10.1" LCD color touchscreen, handheld remote, rear color camera, Sirius-XM®-ready, Apple CarPlay,® Android Auto™, USB input, HDMI/MHL connectivity
Cruise control
12-volt power supply for CB radio
Powered blackout roller visor/shade (front windshield)
Blackout roller shade (driver and passenger windows)
Chassis/house battery radio power switch
Power mirrors w/defrost and sideview camera
Power steering
TRW® tilt/telescopic steering column w/foot-actuated pedal
Powered step well cover (n/a 34T)
Cell phone interface to radio

OPTIONAL EQUIPMENT

*Lounger passenger cab seat w/footrest and flip-up workstation
SiriusXM® (includes 90-day trial subscription) receiver, remote, antenna
JBL® premium audio tuned 360-watt amplifier w/5 speakers including subwoofer

Interior

50" HDTV
Theater seating (34T)
TrueComfort+ and sofa sleeper (36H, 38W)
BenchMark® dinette
Satellite system ready
Multi-plex wall switches
Digital TV amplified antenna system
Home theater sound bar system
Electric fireplace (38W)
LED ceiling lights
Blackout roller shades
Soft vinyl ceiling
OnePlace® systems center
Tinted, dual-glazed coach windows
Dual pane, frameless windows
Washer and dryer prep
Assist bar
Vinyl flooring throughout
USB chargers (cab, lounge, bedroom)
Pull-out table (36H)
Firefly® switch panel (lights up when dark)

OPTIONAL EQUIPMENT

Washer and dryer (located in rear of master bath)
Winegard Trav'ler® automatic HDTV satellite system for DirecTV® and DISH® Network
Electric fireplace (34T, 36H)
Solar/blackout roller shades
StudioLoft™ bed sleep size for 2, 52" x 77" (powered w/ladder and LED lighting) (300 lb. capacity)
Theater seating (36H, 38W)

Galley

Corian® countertops (38W)
Corian® countertops w/flip-up extension (34T, 36H)
Corian® sink covers
2-door 16 cu. ft. 110 VAC residential refrigerator/freezer w/icemaker & flip travel latch (34T, 36H)
2-door 19 cu. ft. 110 VAC residential refrigerator/freezer w/icemaker & flip travel latch (38W)
Microwave/convection oven w/range fan and touch control
3-burner LP range top w/storage below
Glass bi-fold range cover
Pantry
Powered ventilator fan

Bath

Shower 38" x 30"
Shower 30" x 34" (mid-coach 38W)
Flexible handheld showerhead
Textured glass shower door
Skylight
Porcelain toilet w/foot pedal and sprayer (electric flush in rear bath, 38W)

Powered roof vent(s)
Medicine cabinet
Linen cabinet (n/a 38W)
Tissue holder
Towel bar(s)
Towel ring(s)
Laminate countertop
Matching sink cover (master bath 38W)

Bedroom

28" HDTV (38W)
32" HDTV (34T)
40" HDTV (36H)
Queen bed w/WinnSleep® foam mattress and storage below (36H, 38W)
King bed w/InnoMax® Eurotop Freedom-Air™ mattress w/controllers and storage below (34T)
Bedspread and pillow shams
Bunk beds (38W)
Room divider curtain (bunk beds 38W)
Headboard
Wardrobe
Induction chargers in each nightstand

OPTIONAL EQUIPMENT

Queen InnoMax® Eurotop Freedom-Air™ mattress w/controllers (36H, 38W)
King InnoMax® Eurotop Freedom-Air™ mattress w/controllers (36H)

Exterior

Powered patio awning w/LED lighting
2nd powered patio awning w/LED lighting
Exterior compartment 110-volt duplex, TV antenna and 3-way A/V receptacles
KeyOne™ lock system
LED porch light w/interior switch
Lighted storage compartments
Automatic entrance steps
Assist handle
Lower front protective mask
PetPal leash tie down
Premium high-gloss sidewall skin
QuickPort® service connection hatch (power cord, dump hose and water lines)
Undercarriage lighting

OPTIONAL EQUIPMENT

Exterior entertainment center w/32" HDTV

Heating & Cooling System

2-13,500 BTU air conditioners (1 A/C, 1 A/C w/heat pump) (34T)
2-15,000 BTU air conditioners (1 A/C, 1 A/C w/heat pump) (36H, 38W)
35,000 BTU ducted furnace (34T)
40,000 BTU ducted furnace (36H)
2-20,000 BTU ducted furnaces (38W)

Electrical System

Service center cable TV input, 50-amp. power cord, shoreline/generator automatic changeover switch, portable satellite hookup
2,000-watt inverter/charger w/remote panel with coach battery disconnect switch
6,000-watt generator
Auxiliary start circuit
AC/DC electrical distribution system
4 deep-cycle Group 31 Marine/RV batteries
Battery disconnect system (coach and chassis)
PowerLine® Energy Management System
Automatic dual-battery charge control
Automatic generator start system
Wi-Fi router signal booster

Plumbing System

Service center pressurized city water hookup w/diverter fill, freshwater drain, drainage valves, exterior wash station w/pump switch, holding tank flushing system, 20' sewer hose
On-demand water pump
TrueLevel™ holding tank monitoring system
Permanent-mount LP tank w/gauge
Heated holding tank compartment
Water system winterization package
Water system filtration package
TruTank level sensor
Tankless water heater w/recirculating pump

Safety

LP, smoke and carbon monoxide detectors
Fire extinguisher
Ground fault interrupter
High-mount brake lamps
Daytime running lamps
Child seat tether anchor

Warranty⁷

36-month/100,000-mile basic limited warranty⁸
10-year limited parts-and-labor warranty on fiberglass roof skin⁸

FOOTNOTES

- The height of each model is measured to the top of the tallest standard feature and is based on the curb weight of a typically equipped unit. The actual height of your vehicle may vary by several inches depending on chassis or equipment variations. Contact your dealer for further information.
- Floorplans feature a wide-body design - over 96". You should be aware that some states restrict access on some or all state roads to 96" in body width. You should confirm the road usage laws in the states of interest to you.
- The load capacity of your motorhome is designated by weight, not by volume, so you cannot necessarily use all available space when loading your motorhome.
- Capacities are based on measurements prior to tank installation. Slight capacity variations can result.
- Capacities shown are the tank manufacturer's listed water capacity (W.C.). Actual filled propane capacity is 80% of listing due to overfilling prevention device on tank.
- Actual towing capacity is dependent on your particular loading and towing circumstances which includes the GVWR, GAWR, and GCWR as well as adequate trailer brakes. Refer to the chassis operator's manual of your motorhome for further towing information.
- See separate chassis warranty.
- See your dealer for complete warranty information.
- Sleeping capacity is the maximum based on a specific floorplan.

Not all items available in combination. See dealer for details.
Because features, specifications, equipment, and options may vary from those highlighted in this brochure, the buyer is responsible for confirming with the dealer the features, specifications, equipment, and options included on their specific vehicle. In addition, Winnebago's program of continuous product improvement may result in changes to vehicle specifications, equipment, model availability, and price without notice.

EXTERIORS



Hot Anvil II



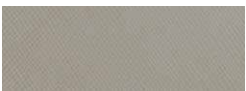
Moonlight



Silver Mist II

DECOR

Tapestry



Ultraselct Choice: Gray



Driftwood II



Wall Board



Ultraselct Choice: Light Patterned



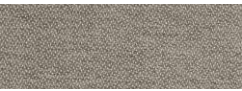
Countertop



Bedspread



Residential Vinyl Flooring



Feature Fabric

Alpine



Ultraselct Choice: Gray



Walnut



Wall Board



Ultraselct Choice: Light Patterned



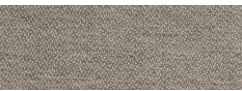
Countertop



Bedspread

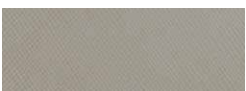


Residential Vinyl Flooring



Feature Fabric

Mineral



Ultraselct Choice: Gray



Sonoma



Wall Board



Ultraselct Choice: Light Patterned



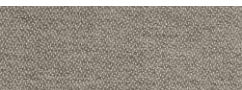
Countertop



Bedspread



Residential Vinyl Flooring



Feature Fabric

