



ENTEGR A
COACH®

Anthem



Serial #: 1JSMEACV2N14D8051
Model: 44D ANTHEM MHA
VIN#: 4VZAU1D90NC091038
Model Year: 2022 Dealer Name: ALBANY RV

48 RENSSLAER AVE
LATHAM, NY 12110
USA

Manufacturer's Suggested Retail Price \$649,403.00

TOTAL AMOUNT DOES NOT INCLUDE STATE AND LOCAL TAXES OR LICENSE FEES. THE PRICE SHOWN ABOVE MAY OR MAY NOT BE REPRESENTATIVE OF THE ACTUAL SELLING PRICE OF SIMILAR RECREATIONAL VEHICLES IN YOUR AREA.

Standard Equipment

THE FOLLOWING ITEMS ARE STANDARD ON THIS MODEL AT NO EXTRA CHARGE

- EXTERIOR**
- Spartan® K2 raised-rail chassis
 - Cummins® L9 turbocharged 450 HP engine with 1,250-lb. ft. torque at 1,400 RPM
 - Allison® 3,000 MH 6-speed transmission
 - Side-mounted, parallel-airflow radiator
 - Keyco® Granning® front axle with independent front suspension - 20,000 lb. rating
 - Meritor rear axle - 20,000 lb. rating
 - Tag axle with air dump - 12,000 lb. rating
 - Bilstein® shocks- 60mm front axle & 46mm rear/tag axles
 - Equalizer™ hydraulic automatic coach leveling
 - Valid Truline air leveling system with auxiliary air compressor
 - Roof: 4" arched aluminum trusses filled with batt insulation and reflective Flexfoil® topped with 3/8" plywood decking then one-piece fiberglass
 - Sidewalls: 2-1/2" exterior walls with Aluma-Tru™ welded tubular aluminum studs on 16" centers or less, filled with batt and Flexfoil® insulation, then covered with high-gloss gelcoat fiberglass (R-16)
 - Floors: 2" x 4" wood trusses on 16" centers or less filled with batt and Flexfoil® insulation then topped with 3/4" 7-ply plywood decking (R-33)
 - X-Bridge™ bracing welded into chassis frame
 - Aqua-Hot® heated basement storage
 - Entegra-exclusive Relia-Torque flush-mounted 12V slideout system
 - Onan® 12,500-watt diesel generator, with automatic start, on powered slide-out tray
 - 3,000-watt pure sine wave inverter
 - (4) L16 AGM batteries (6V/390 amp hrs. ea.)
 - 50-amp power cord on electric powered reel
 - Smart automatic transfer switch with surge protection
 - (3) 15,000-BTU A/C units with heat pumps and condensation drain system
 - Aqua-Hot® 450D hydronic water and heating system with in-floor heat throughout and engine preheat
 - Sani-Con® Macerator holding tank dump system with manual gate valves, manual backup and metal door
 - Trutank™ ultrasonic tank monitoring system displayed on VegaTouch screen
 - Premier Bus Armor 8" stainless-steel trim
 - Power rear engine door with manual override
 - Dual roof-mounted Girard® Vision dual-pitched patio awnings with LED lights
 - Girard® power entrance door awning with LED lights
 - Girard® Ultra slideout awnings
 - Girard® Ultra power window awnings
 - Frameless, dual-pane, tinted, safety-glass windows
 - Lit grab handle with doorbell and keypad system for keyless entry
 - 43" Samsung® QLED 4K UHD Smart TV with tilt, swivel, and extend adjustment
 - JBL radio and speakers with USB port and receptacle
 - Chrome, heated, remote-control, side-view mirrors with integrated cameras and blind-spot indicators
 - Diamond Shield™ front protective film mask
 - Winegard® TRAV'LER satellite dish DIRECTV® - standard with USA option
 - Winegard® Rayzar Automatic powered TV antenna
 - Winegard® WiFi extender with 4G/LTE
 - Heated exterior utility center with 5" LED Firefly® tank monitoring panel
 - Power slideout basement storage tray
 - 2.8-cu. ft. exterior Dometic® refrigerator/freezer on slideout tray

- INTERIOR**
- Valid 15" digital dash with quad core graphics processor, on-board diagnostics, selector knob and ability to display traditional instrument cluster, 360° camera system or GPS navigation
 - Blind spot monitoring system displayed on digital dash screen
 - Xite™ 360° HD digital camera system
 - Xite™ XSG4 infotainment system with dual 9" touchscreens, iGO navigation, Bluetooth®, Sirius XM™ and AM/FM tuner, integrated camera control, house mode whole-coach audio distribution and integrated VegaTouch coach control
 - Tire pressure monitoring system (TPMS) with temperature monitoring
 - E-Z Steer™ adjustable power steering assist
 - Steering wheel with integrated controls for cruise, wipers, radio and Bluetooth® phone functionality
 - Power tilt and telescoping steering column
 - JBL® premium audio 11-speaker sound system with amplifier, speakers and DVC subwoofer
 - Ultra-Vision® one-piece wrap-around tinted windshield
 - 32" Samsung® QLED 4K UHD Smart TV in front overhead
 - Villa® heated leather driver and passenger seats with powered 6-way adjustment, lumbar, recline and footrest functions
 - Powered flush stepwell cover
 - Powered adjustable brake and accelerator pedals
 - Powered front sun visors and privacy shades
 - (2) dual USB ports and (2) 12V sockets for charging
 - LED-lit fireplace with 5,000-BTU heating element (44B, 44Z)
 - Firefly multiplex system with 10" VegaTouch touchscreen for complete integration of coach controls, with remote monitoring and control (mobile app available)
 - 50" Samsung® QLED 4K UHD Smart TV
 - Bose® sound bar with subwoofer and universal remote control
 - Sony® Blu-ray™ player
 - Premium leather Villa® furniture
 - Hand-laid porcelain tiled floors
 - LED interior lighting
 - Powered solar day and blackout night shades
 - Central vacuum system
 - Aire-Secure™ travel locks for all pocket doors
 - Whirlpool® stainless-steel residential refrigerator with ice maker and water dispenser
 - Induction cooktop with matching wood cover
 - Whirlpool® 1.9-cu. ft. convection microwave oven
 - Fisher & Paykel dishwasher
 - Porcelain tile backsplash
 - Solid-surface countertops with Blanco single-bowl granite sink and dimmable LED accent lighting
 - Maxxair® power vent exhaust fan with intake and touch screen control
 - Large, deep drawer for waste basket with easy access trash chute (trash chute not available in 44F, 44R)
 - Select Comfort® Sleep Number® King-size mattress
 - 32" Samsung® QLED 4K UHD Smart TV
 - Bose® sound bar with universal remote control
 - Sony® Blu-ray™ player
 - Ceiling fan
 - Nightstands with solid-surface tops
 - Large cedar-lined wardrobe
 - Solid-surface countertops with integrated glass sink and dimmable LED accent lighting
 - Porcelain tile shower with skylight and clear glass shower door
 - Teakwood shower seat (N/A 44F)
 - Fixed shower head and separate hand-held spray wand
 - Aqua View SHOWERMISER™ water saving system
 - Theetford® macerator toilet in main bath (N/A 44Z)
 - Whirlpool® stacked washer and dryer
 - Storage safe

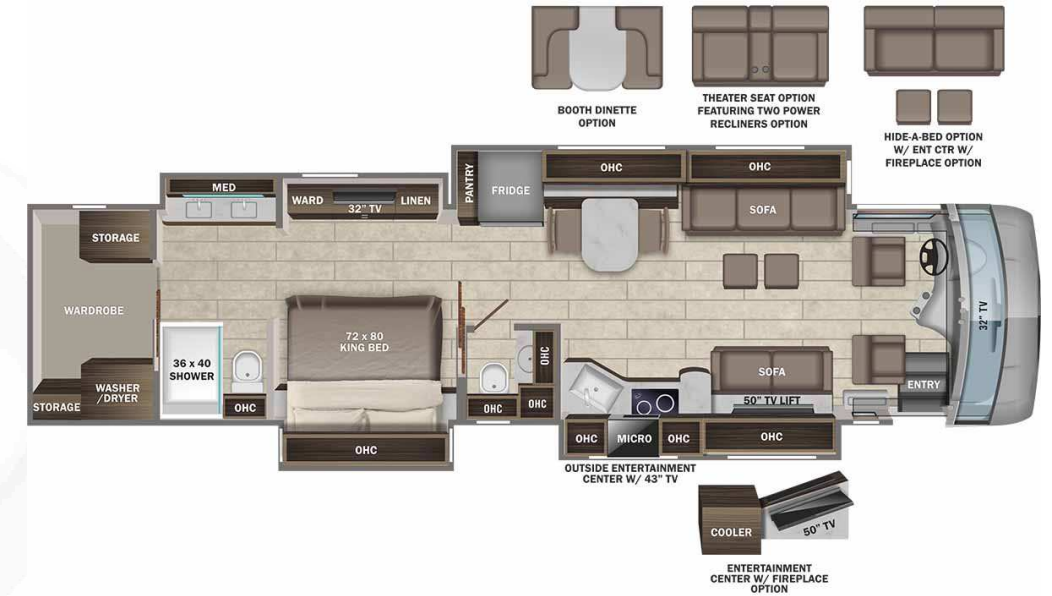
Optional Equipment

OPTIONAL EQUIPMENT INSTALLED ON THIS VEHICLE BY MANUFACTURER

Base price	640,605.00
Metro	n/c
Stonewall Gray Cabinetry	4,493.00
Exclude Linen Front	
Overhead Accent Wood	n/c
Tapestry Grigio Tile	n/c
Aqua Blue Paint	30.00
USA Standards	n/c
22 SP 52000 320" 450 TAG	
AXLE 2021 EMISSIONS NA08	n/c
Dishwasher Drawer	n/c
Trav'ler Direct TV	
Satellite Dish	n/c
Dual Solar Panels	2,775.00
Booth Dinette	375.00
Theater Seating Sofa	1,125.00
Sofa with TV Lift	n/c

UNIT TOTAL **649,403.00**

DEALER INSTALLED OPTIONS



DIMENSIONS

Exterior height:.....155.00"
Exterior width:.....101.00"

CAPACITIES

Fresh water tank (gals.):..100.00
Gray water tank (gals.):....62.00
Black water/toilet tank (gals.):.....41.00
Propane (lbs.):.....0
Propane (gals.):.....0
Water heater (gals.):.....0.00

TIRES

Tire size (front):.....365/70R22.5
Tire size (mid):.....315/80R22.5
Tire size (rear):.....315/80R22.5

Some dimensions may be rounded and may vary from the actual dimensions

***Weights may be estimated calculations and may vary from the actual weight

- refer to the vehicle weight labels for actual weights***

Floorplans, features and specifications are subject to change without notice.