

2008 MAGNA 630



COUNTRY COACH



## 2008 Magna 630

The Magna 630 for 2008 is a testament to Country Coach's refusal to compromise. This new motorcoach exemplifies the quality tradition born some 34 years ago, in concert with the very latest technologies. Country Coach's engineers understand that innovation is of benefit only when it is executed with precision and intent. In the 2008 Magna 630, artisan craftspeople shape the finest materials intertwined with cutting-edge features. Step inside an expansive and luxuriously-appointed floorplan, and discover the beauty of never having to make a compromise.

### New Standard Features

- Radiant floor heating in galley and bath
- Touch pad keyless entry
- Intellitec memory system includes: controls for six cab-mirror heads, steering column, adjustable pedals, and two position memory on the driver seat
- Concealable touch-screen color rear/side-view monitor with AM/FM/satellite radio stereo and compact disc controls with remote 10-disc CD changer, MP3 player input, blue tooth interface, and two speakers
- iPod interface adaptor
- Driver Area Memory Presets: six cab-mirror heads, steering column, adjustable pedals, driver seat
- Powered roller day/night shade system with solar protection and total light blocking capabilities
- Tiled entry stepwell and stepwell slide cover
- Roll-out pantry trays (floorplan dependent)

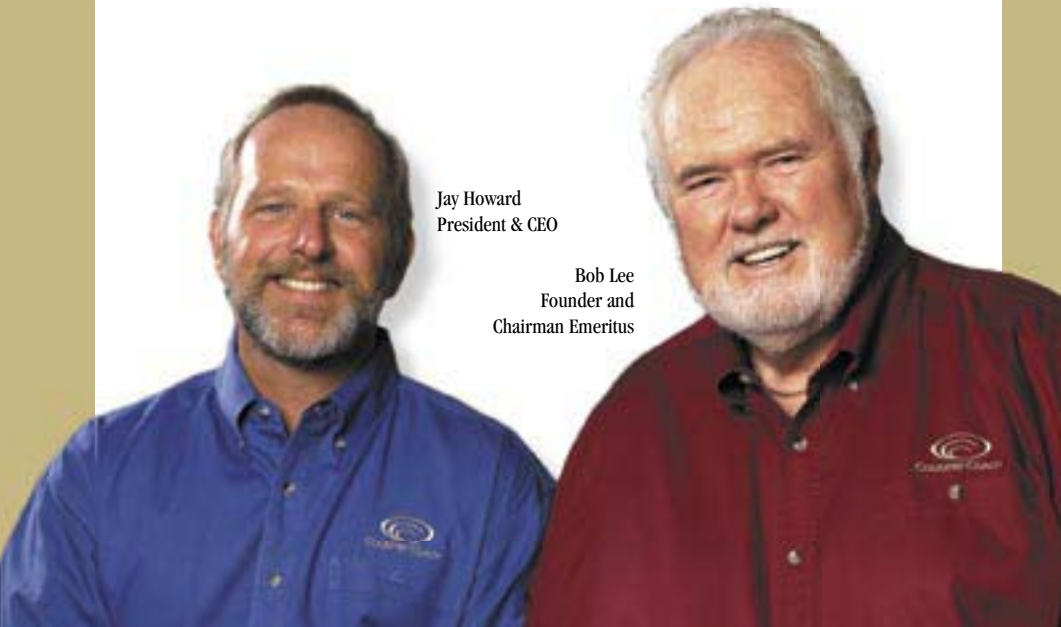
### New Options

- Super storage area with three sliding trays
- Powered dual-directional, full-bay roll-out storage trays (bay size dependent)
- Garmin® GPS navigation system with XM Smart Antenna and color LCD touch-screen interface (XM weather, XM traffic, and XM radio available)
- SilverLeaf weather station
- Powered driver's toll window

## Country Coach is privately held and independently operated, once again.

### HERE'S WHY this is great news for YOU!

- Country Coach can reinvest in its own business to create even more industry-leading innovations.
- All Luxury, All Day, Every Day! Country Coach, the Nation's #1 Luxury-only motorcoach manufacturer, focused on what it does best: Designing and building the highest quality, most innovative motorcoaches in the marketplace.
- Company Founder and RV Industry patriarch Bob Lee has returned to the Country Coach family.
- **The owners and management at Country Coach recognize that continuing to pursue a mastery of quality is key to the company's prosperity, both now and in the future.**



Jay Howard  
President & CEO

Bob Lee  
Founder and  
Chairman Emeritus

*"Country Coach built our first motorcoach for my mother's 64th birthday. That's what we do here. We build each motorcoach like it was for our own Mother."*

- Bob Lee, Founder and Chairman Emeritus

### Chassis Specifications

- **DynoMax® chassis:** semi-monocoque construction of 8" x 3" x 1/4" steel-tube with welded components
  - 15,000 lb receiver hitch with electrical connector and chrome cover
  - 2-year/unlimited-mile chassis warranty
- **40', 42' and 45' chassis:**
  - GVWR - 52,000 lbs
  - GCWR - 67,000 lbs
- **Wheelbase:** 40' - 241", 42' - 265", 45' - 289"
- **Engine:** Cummins® ISX 600 HP at 2100 rpm with 1850 ft-lbs torque at 1100 rpm
  - 14.9 liters (912 cubic inches)
  - Alternator: 320 amps
  - 3-stage engine brake
  - 5-year/100,000-mile warranty
- **Transmission:** Allison 4000 MH with PTO
  - Six speed automatic with two overdrive gears
  - Keypad electronic shifter with digital display
  - 5-year/unlimited-mile transmission warranty (with TranSynd™ fluid)
- **Driveline:** Dana Spicer® SPL 250 series
- **Drive axle:** Dana® with 4.30 differential ratio
- **Suspension:**
  - *Front* - Dana independent front suspension with double wishbone construction and full air suspension system, anti-sway bar, and Koni® shock absorbers
  - *Rear* - Ridewell drive and tag axle (raise/lower) air suspension systems with six air springs and Koni shock absorbers
- **Steering:** Fully-integral, full time hydraulic power steering gear with electrically adjustable tilt and telescoping column with Intellitec memory
- Electronic cruise control
- Adjustable position throttle and brake pedals with Intellitec memory
- **Service brakes:** Full air disc brakes with ABS and Automatic Traction Control (ATC) (17" x 1.75" air discs on all axles)
- **Tires:** Steel-belted radials 315/80R x 22.5"
- **Wheels:** 9" x 22.5" aluminum alloy wheels at all positions
- **Battery:** Two heavy duty 8Ds on roll-out with 12-volt disconnect
- **Fuel capacity:** 150 gallons (dual fuel fills, driver and passenger sides)

- **Service center:** diagnostic reader ports, fuel filters, air filter minder, fresh oil reservoir, and switch for oil reservoir pump

### Construction Highlights

- Exterior width: 102"
- Steel-tube cage structure
- Vacuum-bonded roof, walls and floor with expanded polystyrene insulation
- R20-value roof insulation
- All fiberglass exterior
- One-piece molded fiberglass roofcap
- Exterior riding height: 12' 10" (including roof air; height varies with satellite option)
- Finished interior height: 83-3/4"
- Sound and vibration dampening material throughout

### Driver Compartment Amenities

- 6-way power-adjustable driver and passenger seats with two-position memory and 3-point restraint (driver seat offers a sliding seat cushion, and the passenger seat provides a power footrest)
- "Buddy" power passenger seat
- Massage/heated driver and passenger seats with adjustable headrests and 2-way lumbar support
- Species hardwood overhead dash with storage
- Custom contoured Ultraleather® dash
- Two 12-volt receptacles in dash
- **Data-bus instrumentation includes:** speedometer, tachometer, air pressure, oil pressure, transmission temperature, volt meter, water temperature, fuel level, odometer, trip odometer, and indicator lights
- **Intellitec memory system includes:** two-position memory controls for six cab-mirror heads, steering column, adjustable pedals, and driver seat
- SilverLeaf VMS 400 CL digital engine monitor/travel information center with auto generator start, auto temperature control, rear-view monitor, and optional weather station
- SilverLeaf Compudigital dash
- Garmin® GPS navigation system with XM Smart Antenna and color LCD touch-screen interface (XM weather, XM traffic, and XM radio available with subscription)

- Concealable touch-screen color rear/side-view monitor with AM/FM/satellite radio stereo and compact disc controls with remote 10-disc CD changer, MP3 player input, blue tooth interface, and two speakers
- Eaton® VORAD® collision avoidance and cruise control system
- Built-in valet tray for driver and passenger
- Single-piece wrap-around windshield with shade band
- Powered driver's toll window
- Radial single-motor windshield wipers with delay and washers
- Heating/cooling/defrost unit in dash (dual zone and dual blower controls for driver/passenger)
- Ducted overhead defrost system
- Powered roller day/night shade system with solar protection and total light-blocking capabilities
- Back-up alarm
- Dual map lights
- 18" SmartWheel® burl wood steering wheel with controls for horn, head light flash, marker light flash, cruise functions, and wipers
- SmarTire® II tire monitoring system
- Bound floor carpets for entry steps
- Tiled entry landing
- Tiled floor in driver's area
- Tiled entry stepwell and stepwell slide cover
- Entry stepwell storage drawer
- Entry door interior assist grip

### Front Entertainment

- 37" LCD high definition TV in overhead dash with seven ceiling speakers and subwoofer
- 42" LCD high definition TV in overhead dash with seven ceiling speakers and subwoofer
- Living room TV lift with 37" or 42" high definition TV
- Yamaha® digital home theater system with 7.1 surround sound and DVD player (5.1 surround sound with TV lift option)
- iPod interface adapter
- Digital video recording system
- Pre-wired for satellite dish
- TracStar® satellite system with H20 receiver in living room (includes additional receiver in bedroom)

- Universal remote with color TFT (Thin Film Transistor) LCD display and integrated touchscreen
- Additional universal remote

### General Conveniences

- Choice of six interior design themes: Ardenne, Bayview, Chelsea, Madras, Martinique, Montreal
- Custom crafted cabinetry and woodwork
- Oak cabinetry
- Light cherry cabinetry
- Medium cherry cabinetry
- Dark cherry cabinetry
- Hickory cabinetry
- Maple cabinetry
- Walnut cabinetry
- Decorative knobs and pulls
- Self-closing drawer guides
- Hardwood pocket doors
- Padded vinyl ceiling
- Decorative ceiling console with recessed halogen lights and whisper air conditioning vents
- Custom interior package
- Custom interior décor kit (preset)
- Euro recliner with ottoman
- Occasional table
- Flat sofa bed
- Fold out sofa bed
- Hide-away sofa bed
- Office Suite
- Computer table with charging center (replaces occasional table)
- Flat J sofa bed
- Fold out J sofa bed
- Hide-away J sofa bed
- Additional recliner and ottoman
- Wallpaper throughout (designer-coordinated)
- Halogen lighting throughout
- Rope lighting at galley and vanity toekicks, living room/dining area/bedroom window boxes, slide-out room soffits and lighted valances
- Decorative window boxes and valances in living room, dining area, and bedroom with solid-surface sill
- Electric Vienna shades
- Ceiling and wall sconce lighting with dimmers
- Custom river run tile with sculpted carpet border (floorplan dependent)
- Sculpted carpet in living area

- Full tile living room floor
- Radiant floor heating in living room (available with full tile living room option)
- Radiant floor heating in galley and bath
- Granite countertops with wood window sills in galley, bath, and bedroom (includes stainless steel sink in galley)
- Pre-wired for solar panels
- Washer/dryer combo with tiled floor area
- Stacked washer and dryer with tiled floor area (floorplan dependent)
- Super storage area with three sliding trays (replaces washer/dryer combo)
- Decorative glass inserts (floorplan dependent)
- Stained glass insert in upper curio cabinet (floorplan dependent)
- Stained glass inserts in overhead dinette cabinets (set of four)
- Stained glass inserts in desk overhead (set of four) (floorplan dependent)
- Stained glass inserts in bed overhead (set of four)
- Additional stained glass insert in bed overhead (floorplan dependent)
- Ironing board
- Pull-out clothes hamper with two bags
- Furniture quality step stool
- Portable vacuum cleaner
- Dirt Devil® central vacuum system (replaces portable vacuum)
- Built-in safe with combination lock
- Telephone jacks (two in living area, one in bedroom, and one in storage bay)
- Stepwell light
- Burglar alarm (inside/outside protection) with key fob controlled keyless entry with security light activation
- Smoke detector
- Carbon monoxide detector
- Fire extinguisher
- Power step slide cover
- LP gas detector system with auto shut-off
- **SilverLeaf house monitoring system operates:**
  - 120 and 12-volt devices
  - Controls inverter/converter
  - Monitors holding tank levels
  - Fresh-water fill
  - Generator with auto gen start
- SilverLeaf weather station

- Coach Information Kit: Owner's Guide, OEM manuals, chassis parts list
- Emergency roadside service (first year paid by Country Coach)
- Factory delivery

### Galley Amenities

- Polished solid-surface countertops with edge detail
  - Solid-surface splashguard located at forward end of countertop
  - Full tile backsplash
- Double-bowl solid-surface sink with solid-surface covers, and single-lever faucet with pull-out sprayer
- Fan-Tastic® thermostatically-controlled variable speed fan with rain sensor, insulated cover, and dome stop switch
- Amana® 22 cu ft 2-door side-by-side electric refrigerator/freezer with icemaker and raised panel inserts
- Advantium® Speedcook microwave/convection oven with power hood
- Recessed 2-burner electronic-ignition gas cooktop with solid-surface cover
- Stainless steel appliance package (refrigerator door and Advantium oven)
- All-electric package (includes second 3000-watt inverter, two additional AGM house batteries, and touch pad controlled electric cooktop)
- Wood window box with mini blinds on galley window
- **Dining area seating variations:**
  - Dining area wall cabinet and wall-mounted dining table with fore and aft slide mechanism, with two standing and two folding chairs
  - Wall-mounted café dinette
  - Sleeper café dinette
- U dinette booth or J dinette booth (includes two folding dinette chairs)
- Tile flooring on main floor, carpet in slide rooms
- Decorative dining area light
- Pull-out bread board
- Double slide utensil tray in top drawer of galley
- Pull-out trash receptacle
- Roll-out pantry trays (floorplan dependent)
- Glassware cabinet with drink set

- Convenience lights in lower galley cabinets
- Wine rack in dinette wall module
- Dish Drawer® dishwasher (floorplan dependent)

### Bath Amenities

- Polished solid-surface countertops with edge detail
- Full tile backsplash
- Solid-surface vanity sink(s) (under-mount)
- Decorative light(s) bar for each vanity
- Vanity overhead with mirrored doors
- Towel ring at each vanity sink, towel bar and toilet tissue holder
- Radius shower with solid-surface shower walls and decorative tile insert
- Etched glass shower enclosure
- Insulated skylight above shower
- Light in shower
- Thetford Aria™ electric china toilet or Tecma china toilet (floorplan dependent)
- Water pump switch
- Fan-Tastic® thermostatically-controlled variable speed fan with remote switch, rain sensor, insulated cover and dome stop switch
- Hand-held pressure-balanced shower unit
- Hardwood pocket doors with full-length mirror
- Tile flooring
- Mini-blinds with fabric valance on bath window
- Corian shower footrest

### Bedroom Amenities

- Queen bed 60" x 77" with radius corners
- King bed 72" x 77" (floorplan dependent) (eliminates window in slide-out)
- California queen bed 66" x 77" (floorplan dependent)
- Power adjustable bed with latex mattress
- Air mattress in bedroom available in queen, California queen, and king sizes (not available on adjustable bed)
- Clothes dresser with drawers
- Upholstered headboard
- Bedspread with reversible sham and three décor pillows
- Two nightstands with solid-surface countertops and edge detail with queen bed
- Wardrobe with lighting and cedar panel on wardrobe shelf

- French style wood wardrobe doors with mirror inserts
- Wall sconce lighting
- Intellitec remote switching system with light dimming feature includes: generator start/stop, curb lights, rear flood lights, camera security, and over-the-road A/C blower
- 32" LCD high definition TV with Integra digital home theater system with DVD player and 5.1 surround sound
- Adjustable reading lights
- Telephone jack
- Carpet
- Over-the-road 15,000 BTU air conditioning cooling unit

### Heating and Cooling Systems

- **Multi-zoned temperature control center controls the following:**
  - Diesel-fired 50,000 BTU Aqua-Hot® hydronic heating system with two 2000-watt electric elements
  - Three 15,000 BTU low-profile roof mounted air conditioners with heat pumps
- **Heating and cooling system for dash area and cooling system for bedroom:**
  - A/C, heating, and defrost system with separate dual zone controls for driver/passenger (45,000 BTU heating, 19,000 BTU cooling)
  - Over-the-road A/C in bedroom
- Front roof A/C operated from inverter (includes two additional AGM house batteries and second 3000-watt inverter)
- Front roof A/C operated from inverter (requires all-electric package)

### Power Sources

- 12-volt battery boost system
- Automatic low-voltage generator start
- Onan® 12.5 kW "quiet" liquid-cooled diesel generator with remote start/stop, on electric roll-out
- Power Tech 12.0 kW "quiet" generator with remote start/stop switch CAT® liquid-cooled engine, on electric roll-out
- 3000-watt solid state, Xantrex® RS3000 true sine wave inverter/converter

- Second 3000-watt Xantrex RS3000 true sine wave inverter/converter (included in all-electric package and/or front A/C operated from inverter)
- Four AGM 8D domestic deep cycle batteries on roll-out with 12-volt disconnect switch located on the entry switch panel
- Six AGM 8D domestic deep cycle batteries (included in all-electric package and/or front A/C operated from inverter)
- Two 8D chassis deep cycle engine cranking batteries on roll-out with 12-volt disconnect
- 50-amp shore cord on power reel with 30-amp adaptor
- 50-amp surge protector with transfer switch
- 400 watt solar panels

### Plumbing Features

- **Stainless steel, heated plumbing bay includes:**
  - Retractable, cold water hand-held spray fixture
  - Pressure regulated city-water to water-tank fill
  - Electric dump valves
  - Hot and cold faucet
  - Soap dispenser
  - Four LED lights
  - Lighted logo
  - Telephone and cable TV hook-ups
- Aqua-Hot® hydronic water heating system with electric back-up
- 12-volt on-demand water pump
- Four water pump switches located in galley, main vanity, enclosed toilet vanity, and plumbing bay
- Electric fresh-water low-point drain valves
- Black and gray water tank flush system
- Water filtration system on cold potable water line
- Electric fresh-water hose reel in plumbing bay
- Sewer hose, hose adapter, and storage for both
- RV Sani-Con® tank drain system

### Tank Capacities

- 95 gallon fresh-water tank
- 60 gallon gray-water tank
- 60 gallon black-water tank
- 5.5 gallon LP tank
- 150 gallon fuel tank

### Exterior Conveniences

- Powder-coated steel frame structure entry door with auto-hold, deadbolt, touchpad keyless entry, key fob keyless entry, and screen door
- Lighted entry door assist grip
- Two patio lights
- Security lighting on entry door key fob
- Electric entry doorstep with automatic override at ignition
- Retractable non-skid entry steps
- **Standard awning package:**
  - Carefree® passenger lateral arm patio awning (120-volt power) with motion sensor
  - Girard® slide-out cover on all slides
  - Two folding patio chairs
- Double electric patio awning package (120-volt power) with one additional electric box patio awning on passenger-side with motion sensor
- Quad electric box patio awning package (three additional, 120-volt power)
- Girard electric window awnings (120-volt power)
- Carefree manual entry door awning
- Power adjustable TV antenna with coaxial cable and 12-volt boost
- Two 120-volt receptacles, 12-volt receptacle, coaxial cable, and telephone jack (storage bay)
- Exterior entertainment center with 32" LCD high definition TV (replaces roll-out storage unit in the same bay)
- Compressed-air supply hook-up in steering bay and rear of coach plus 25' air hose
- Two chassis-mounted air horns
- Thermostatically-controlled/heated, remote control, triple-head, chrome cab mirrors with turn signals, side-view cameras, Intellitec memory, and adjustable arms
- HWH® 4-point CAN automatic air leveling system
- Daytime running lights
- Fog lights
- Four curb lights
- Large halogen headlights
- Lighted, pass-through exterior storage bays with carpet lining and insulated doors
- Electric bay door latches/locks
- Single-directional, half-bay roll-out storage tray(s)

- Dual-directional, full-bay roll-out storage tray(s)
- Powered dual-directional, full-bay roll-out storage trays (bay size dependent)
- Full rear mud flap with stainless steel trim
- Key-One® system (one key for all locks)
- Polished stainless steel exhaust pipe tips for generator, Aqua-Hot, and engine
- Undercoating
- 3M® nose and entry door area protectant
- Clear-coat exterior
- Exclusive paint schemes (six color themes)
- Bronze tone reflective dual-pane insulated windows
- Shore cord on power reel
- 30" aluminum step ladder
- Ladder with universal assist ladder extension
- Two fuel cap holders
- Retractable engine light with remote reel
- Side-view cameras in cab mirrors with dash and bedroom displays
- Sunscreen package with wiper covers

### Slide-Out Room Special Features

- Push-button slide-activation control panels
- Hydraulic slide-out room mechanisms
- Pleated shade(s) on both forward slide-outs
- Emergency hand-operated winch for slide-out rooms
- Slide-out room toppers
- Automatic travel lock when slide-out room is retracted

### Slide-Out Room Dimensions

#### 40' Matisse

SLIDE-OUT	WIDTH	DEPTH	HEIGHT
A. Living room	11'3"	2'8"	6'0"
B. Galley	12'8"	1'8"	5'8"
C. PS Bedroom	6'9"	1'2"	5'6"
D. DS Bedroom	9'2"	2'0"	5'1"

#### 42' Monet

SLIDE-OUT	WIDTH	DEPTH	HEIGHT
A. Living room	12'7"	2'8"	6'0"
B. Galley	13'8"	1'8"	5'8"
C. PS Bedroom	6'6"	1'2"	5'6"
D. DS Bedroom	7'11"	2'0"	5'1"

#### 42' Van Gogh

SLIDE-OUT	WIDTH	DEPTH	HEIGHT
A. Living room	12'7"	2'8"	6'0"
B. Galley	13'8"	1'8"	5'8"
C. PS Bedroom	5'10"	1'2"	5'6"
D. DS Bedroom	6'7"	2'0"	5'1"

#### 45' Rembrandt

SLIDE-OUT	WIDTH	DEPTH	HEIGHT
A. Living room	12'7"	2'8"	6'0"
B. Galley	16'1"	1'8"	5'8"
C. PS Bedroom	6'6"	1'2"	5'6"
D. DS Bedroom	10'11"	2'0"	5'1"

#### 45' Galileo

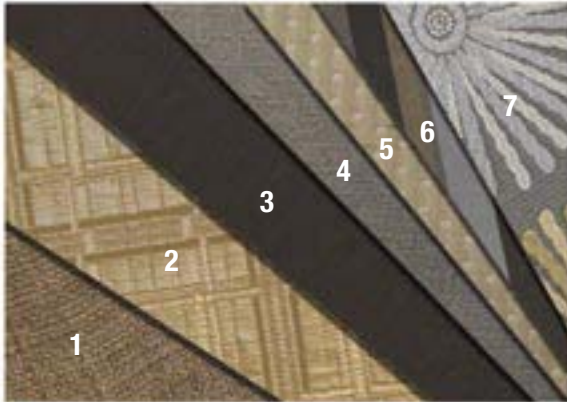
SLIDE-OUT	WIDTH	DEPTH	HEIGHT
A. Living room	12'7"	2'8"	6'0"
B. Galley	12'8"	1'8"	5'8"
C. PS Bedroom	5'10"	1'2"	5'6"
D. DS Bedroom	10'11"	2'0"	5'1"

### Options Summary

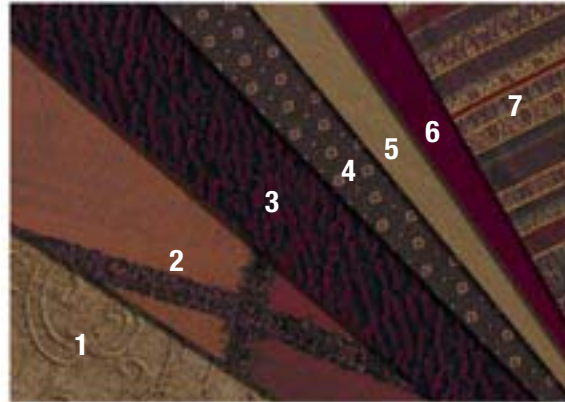
- Powered driver's toll window
- TracStar® satellite system with H2O receiver in living room (includes additional receiver in bedroom)
- "Buddy" power passenger seat
- Massage/heated driver and passenger seats with adjustable headrests and 2-way lumbar support
- SilverLeaf Compudigital dash
- SilverLeaf weather station
- Garmin® GPS navigation system with XM Smart Antenna and color LCD touch-screen interface (XM weather, XM traffic, and XM radio available with subscription)
- Eaton® VORAD® collision avoidance and cruise control system
- SmarTire® II tire monitoring system
- Additional universal remote
- 42" LCD high definition TV in overhead dash with seven ceiling speakers and subwoofer
- Living room TV lift with 37" or 42" high definition TV
- Light cherry cabinetry
- Medium cherry cabinetry
- Dark cherry cabinetry
- Hickory cabinetry
- Maple cabinetry
- Walnut cabinetry
- Custom interior décor kit (preset)
- Custom interior package

- Decorative glass inserts (floorplan dependent)
- Stained glass insert in upper curio cabinet (floorplan dependent)
- Stained glass inserts in desk overhead (Galileo only) (set of four)
- Stained glass inserts in overhead dinette cabinets (set of four)
- Stained glass inserts in bed overhead (set of four)
- Additional stained glass insert in bed overhead (floorplan dependent)
- Custom river run tile with sculpted carpet border (floorplan dependent)
- Sculpted carpet in living area
- Tiled entry stepwell and stepwell slide cover
- Full tile living room floor
- Radiant floor heating in living room (available with full tile living room option)
- Granite countertops with wood window sills in galley, bath, and bedroom (includes stainless steel sink in galley)
- Computer table with charging center (replaces occasional table)
- Additional recliner and ottoman
- Flat J sofa
- Fold out J sofa
- Hide-away J sofa
- U dinette booth or J dinette booth (includes two folding dinette chairs)
- Dirt Devil® central vacuum system (replaces portable vacuum)
- All-electric package (includes second 3000-watt inverter, two additional AGM house batteries, and touch pad controlled electric cooktop)
- Stainless steel appliance package (refrigerator door and Advantium oven)
- Wine rack in dinette wall module
- Dish Drawer® dishwasher (floorplan dependent)
- Corian shower footrest
- Stacked washer and dryer with tiled floor area (floorplan dependent)
- Super storage area with three sliding trays (replaces washer/dryer combo)
- King bed 72" x 77" (floorplan dependent)
- California queen bed 66" x 77" (floorplan dependent)
- Power adjustable bed with latex mattress
- Air mattress in bedroom available in queen, California queen, and king sizes (not available on adjustable bed)
- Front roof A/C operated from inverter (includes two additional AGM house batteries and second 3000-watt inverter)
- Power Tech 12.0 kW "quiet" generator with remote start/stop switch CAT® liquid-cooled engine, on electric roll-out
- Second 3000-watt Xantrex RS3000 true sine wave inverter/converter (included in all-electric package and/or front A/C operated from inverter)
- Six AGM 8D domestic deep cycle batteries (included in all-electric package and/or front A/C operated from inverter)
- Front roof A/C operated from inverter (requires all-electric package)
- 400 watt solar panels
- RV Sani-Con® tank drain system
- Girard electric window awnings (120-volt power)
- Double electric patio awning package (120-volt power) with one additional electric box patio awning on passenger-side with motion sensor
- Quad electric box patio awning package (three additional) (120-volt power)
- Carefree® manual entry door awning
- Exterior entertainment center with 32" LCD high definition TV (replaces roll-out storage unit in the same bay)
- Single-directional, half-bay roll-out storage tray(s)
- Dual-directional, full-bay roll-out storage tray(s)
- Powered dual-directional, full-bay roll-out storage trays (bay size dependent)
- 3M® nose and entry door area protectant
- Ladder with universal assist ladder extension
- Sunscreen package with wiper covers
- Factory delivery

Bayview



Ardenne



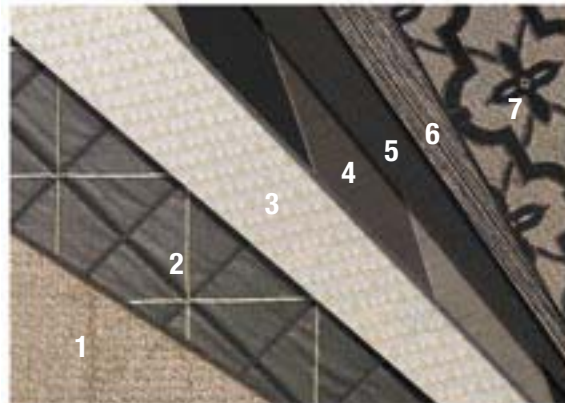
Madras



Martinique



Chelsea



Montreal



1. Sofa 2. Bedspread 3. Accessory 4. Valance 5. Valance 6. Valance 7. Chairs

While we try to represent the textiles accurately, color and hue shown here may vary from the original samples. Please see your dealer representative to view actual fabric samples.

### WOOD CHOICES

Oak (standard)



Light Cherry (Optional)



Medium Cherry (Optional)



Hickory (Optional)



Walnut (Optional)



Maple (Optional)



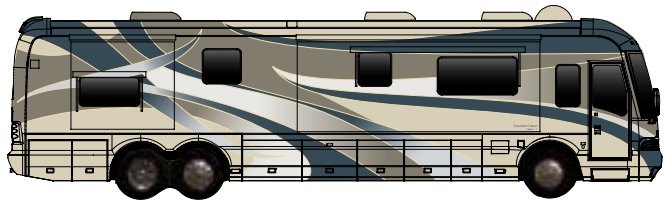
### CABINETS STYLE CHOICES

Styles shown in light cherry



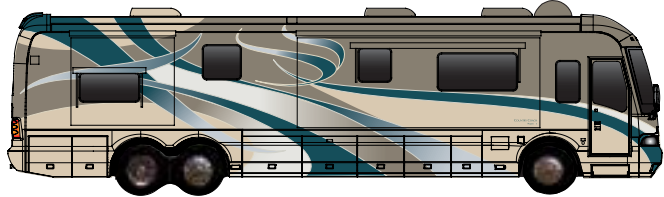
**IMPORTANT NOTICE:** Country Coach does not represent or warrant that its motorcoaches can lawfully be operated on all roads or in all states. Laws restricting the length, width, and/or weight of vehicles vary from state to state. Depending on the model, some Country Coach motorcoaches (as well as similar sized motorcoaches produced by other manufacturers) may not legally be used on certain roads or in certain states, or may only be used on such roads or in such states with special permits or license endorsements. It is the responsibility of each prospective purchaser of a motorcoach to determine any limitations or restrictions on the use of the motorcoach in the states in which the purchaser intends to use it.

Due to constant product improvements, the styling, design, equipment and construction are subject to change without notice or obligation. We reserve the right to make changes, but are happy to verify any item on request. **Some items featured may be optional.**

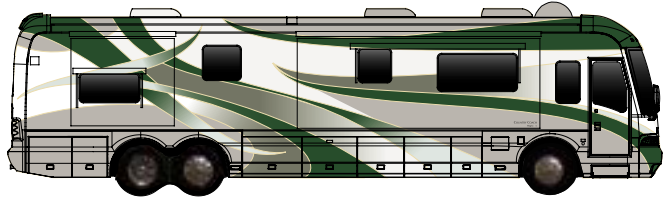


1

Bayview

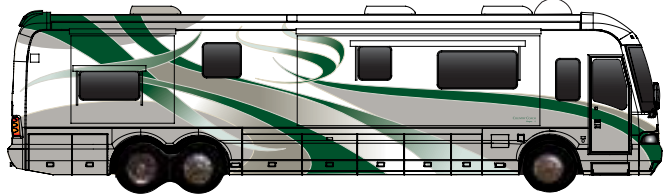


2

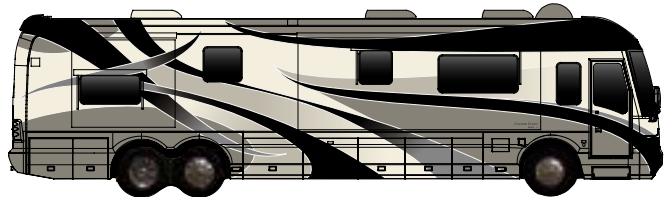


1

Martinique

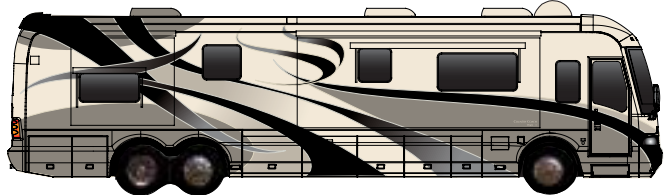


2

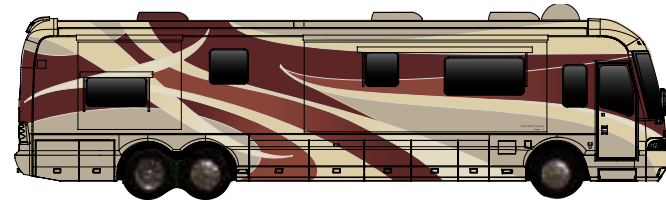


1

Montreal

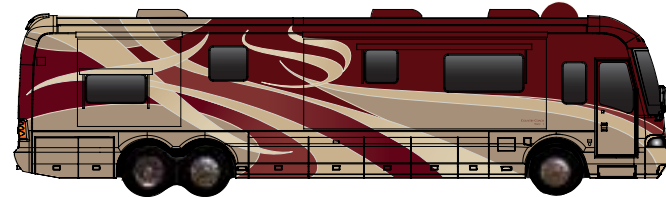


2

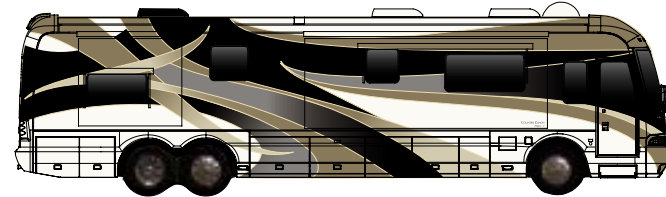


1

Ardenne



2

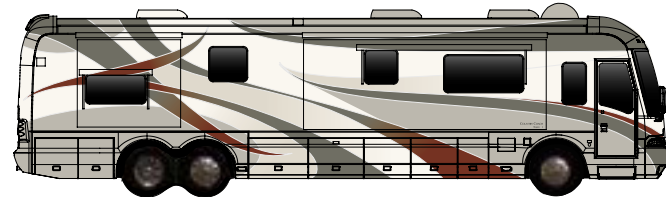


1

Chelsea

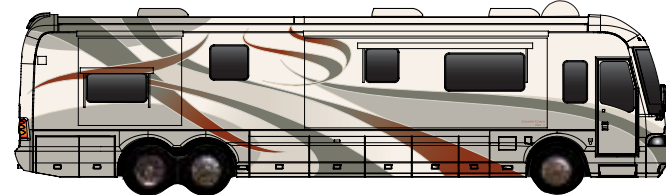


2



1

Madras



2

SELECT YOUR FAVORITE SEATING

SEATING 2



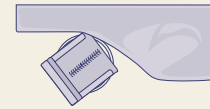
(DS) Sofabed  
(PS) Sofabed  
Can not choose two J sofas  
or two hide-away sofas

SEATING 3



(DS) Euro recliner  
with ottoman and  
occasional table  
(PS) Sofabed

SEATING 5

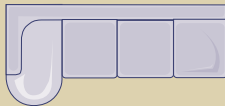


(DS) Office Suite desk  
and Euro recliner  
with ottoman  
(PS) Sofabed

Only seating 2, 3 and 5 available DS = Driver-Side, PS = Passenger-Side

SELECT YOUR FAVORITE SLEEPER SOFABED

J-Sofabed



Sofabed



For the Magna 630, Sofabeds are often available in standard and J-configurations. In each configuration, two styles of sofa bed may be available.

STYLES

**Fold-out Sofabed**

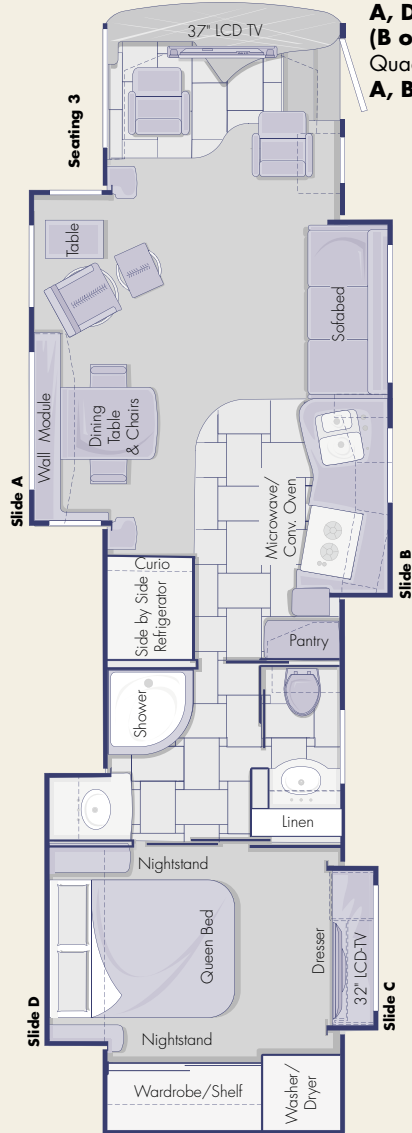
Style features a residential sofa bed design. For conversion to bed, lift the sofa bed seat up and out to a horizontal position. Provides a sleeping surface faced with sofa fabric.

**Hide-away Sofabed**

Style features a residential sofa bed design. For conversion to bed, remove the seat cushions and pull out the hide-away bed frame to unfold and extend the mattress. Provides a conventional or air mattress sleeping surface.

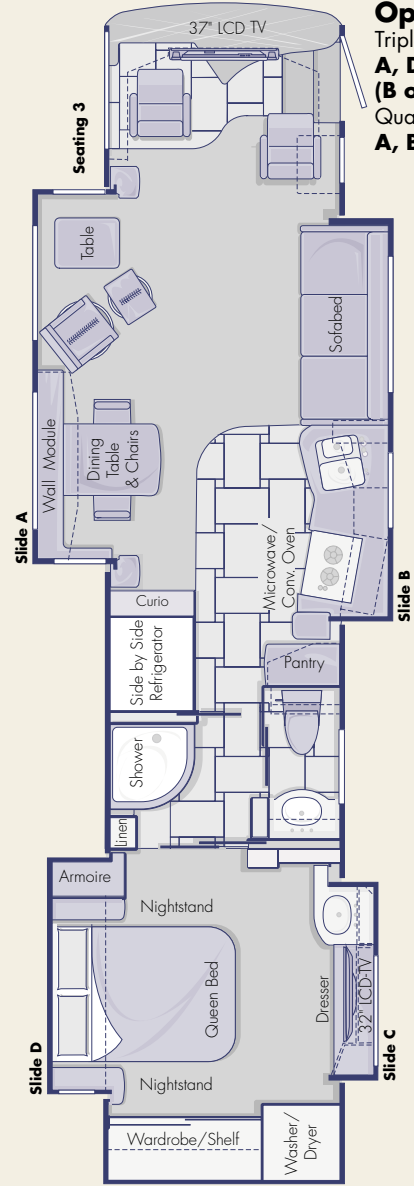
### 40' Matisse

**Modular Slide Options:**  
 Triple Slide: **A, D, (B or C)**  
 Quad Slide: **A, B, C, D**



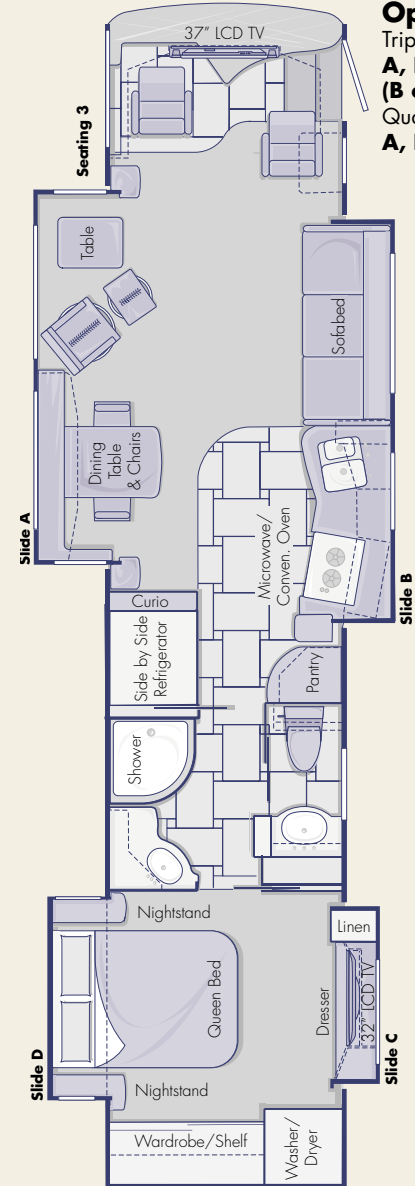
### 42' Monet

**Modular Slide Options:**  
 Triple Slide: **A, D, (B or C)**  
 Quad Slide: **A, B, C, D**

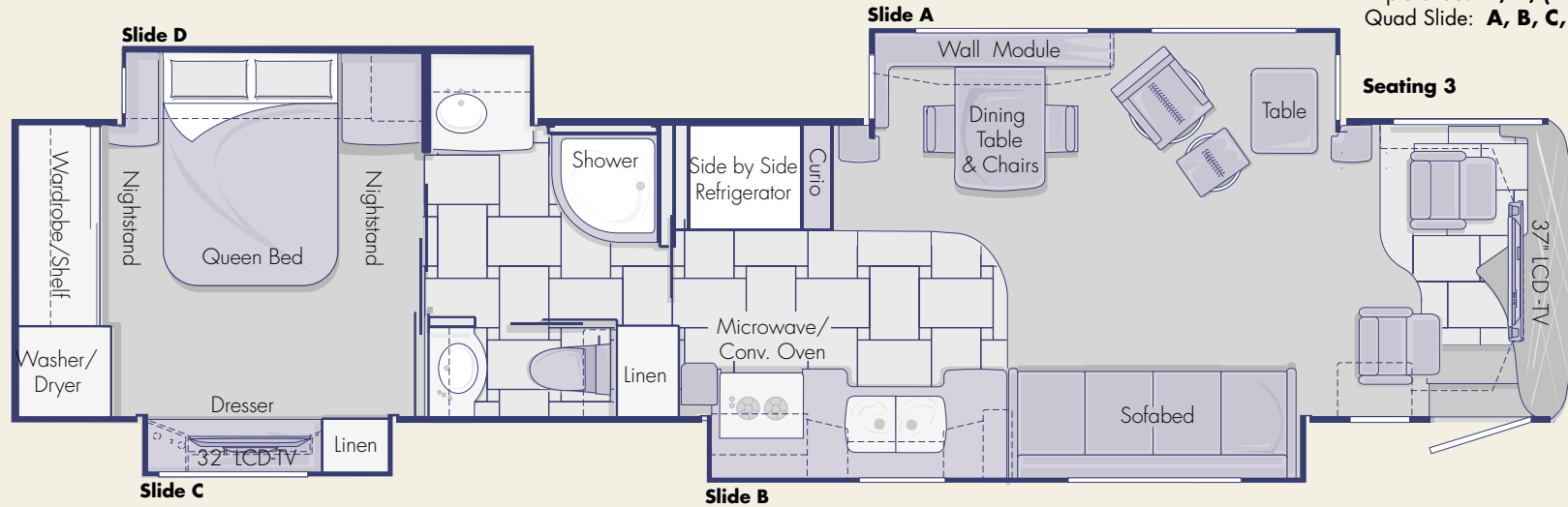


### 42' Van Gogh

**Modular Slide Options:**  
 Triple Slide: **A, D, (B or C)**  
 Quad Slide: **A, B, C, D**



### 45' Rembrandt



#### Modular Slide Options:

Triple Slide: **A, D, (B or C)**

Quad Slide: **A, B, C, D**

### 45' Galileo

