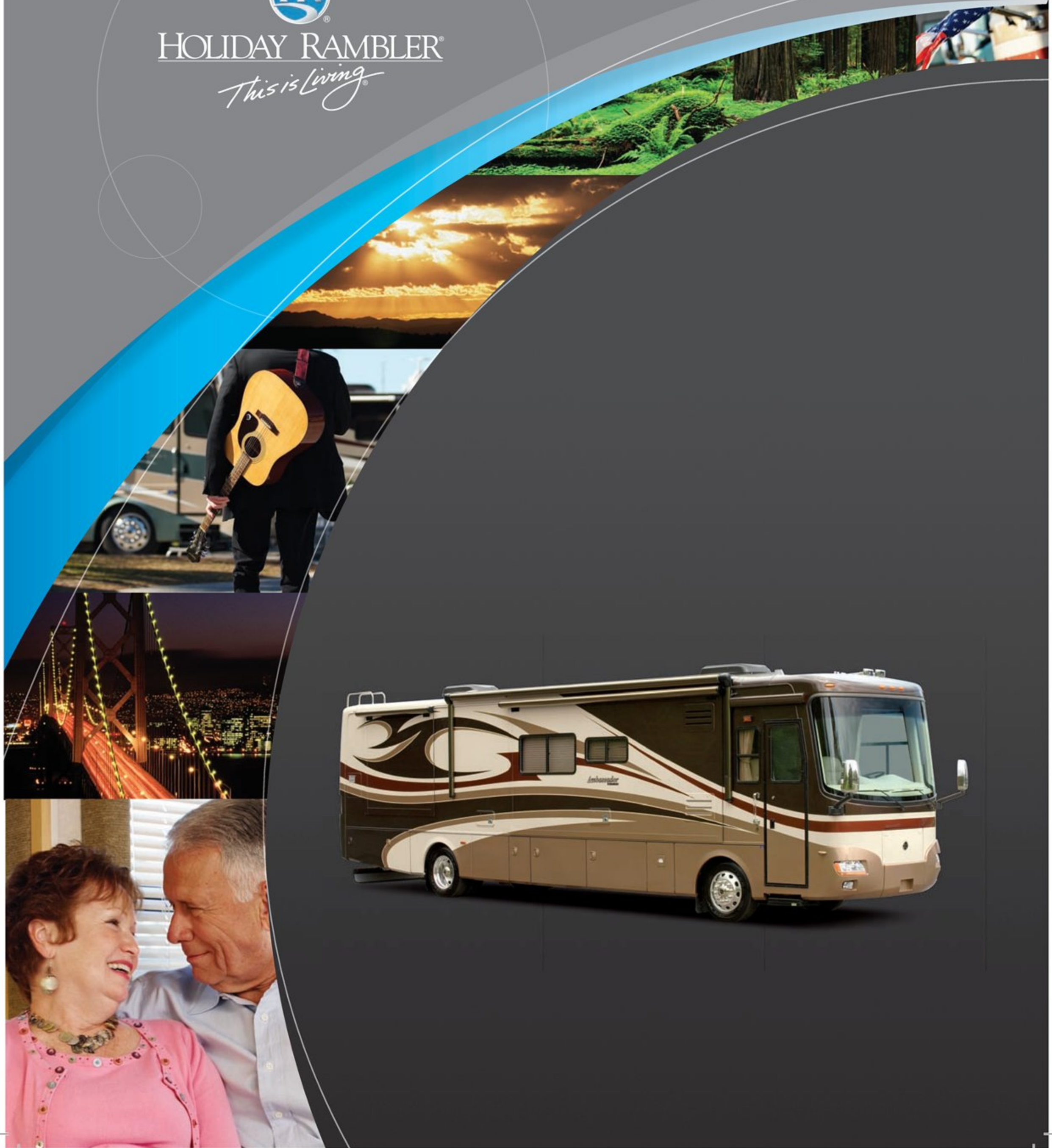


AMBASSADOR®
2008



HOLIDAY RAMBLER®

This is Living®



 AMBASSADOR®



This is Living®





40SKQ | SPRING MIST | NEWPORT CHERRY

AMBASSADOR. UNITING LUXURY WITH AFFORDABILITY.

The terms luxury and affordability may seem like opposites, until you see the 2008 Ambassador. This lavish beauty oozes luxury with stunning interiors, from the ceramic tile in the kitchen, entryway and bath to the new Flexsteel furniture. And yes, that's an actual working fireplace under the huge 37" flatscreen TV in the living room hutch. You'll find it in the 40SKQ floorplan. But every Ambassador model has raised panel hardwood cabinet doors with redesigned profiles, day/night pleated shades, an oversized rear

wardrobe closet and textured nylon carpeting in living area and bedroom. Something else you'll find on every Ambassador is power and performance. Ambassador's rear diesel engine delivers power while the exclusive Roadmaster chassis smooths out the ride. But, the most attractive feature of all may be Ambassador's surprisingly affordable price. A true luxury.



This is Living®

▶◀ PANAVIEW™

1-PIECE WINDSHIELD



40SKQ | SPRING MIST | NEWPORT CHERRY

COMBINING FORM AND FUNCTION.

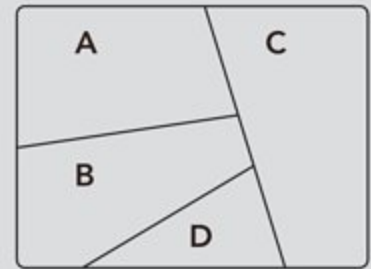
Throughout Ambassador, you'll find amenities that help make life on the road more pleasant. The trick is how beautifully they're incorporated. The kitchen has ample storage space in the form of beautiful cabinets. The countertops are designed for durability, but also happen to look fantastic with a polished surface and radius corners. The refrigerator not only gives you enough room, but gives you the option of standard hardwood inserts or a stainless steel finish. The bedroom is delightfully comfortable with a 20" LCD

TV and queen-size bed, while the private bathroom is both spacious and charming. To keep Ambassador looking its best, add the central vacuum system that, naturally, stores neatly out of sight. In the cockpit, the performance of the Cummins® engine is balanced with the comfort of Ultraleather™ seats and the looks of the automotive style dash and 4-spoke steering wheel. Together, they make every mile enjoyable.

WHAT'S YOUR IDEAL COMBINATION?

Part of the beauty of Ambassador is that you get to choose the perfect color and decor choice for you and your family. The choices of deluxe full-body paint exteriors coordinate perfectly with the upscale interior fabric selections. And, to bring it all together, you can choose which wood finish you prefer — the cool sophistication of Champagne Select or the warm, rich tones of Newport Cherry.

- A. BEDSPREAD
- B. SOFA
- C. ACCENT
- D. CARPET



STARDUST



SUPER NATURAL



BETTER
STAIN
PROTECTION

Manufactured in, not added on. For added protection against stains, soil repellent is applied to virtually all upholstery fabric during the finishing process for superior coverage.*

*Brand and application of upholstery fabric protection may vary depending on date recreational vehicle was manufactured.



NEWPORT CHERRY



CHAMPAGNE SELECT



SPRING MIST



WE'RE HERE. ANYTIME, EVERY TIME.

- Reach us anytime — literally — via our live customer support line.
- Drive in to one of our 350 Service Centers.
- Enjoy the first year free when you enroll in our Owner Advantage Roadside Assistance Program.
- See where it all begins with a tour of one of our facilities in Indiana or Oregon. Call 1-800-650-7337 or 1-800-634-0855 to find out more.



Alumaframe®



Aluminum
(Butt-Welded)



Alumaframe®
(C-Channel)

1 The Ambassador features Holiday Rambler's exclusive Alumaframe® Superstructure. Our revolutionary system of interlocking aluminum H and C-Channel crossmembers runs the entire length of the unit, with double-welded intersections for added strength. This rigid design is both lighter and sturdier than tubular aluminum frames — and much more reliable than butt-welded or screwed joint designs. From dirt roads to potholes, you can count on Alumaframe® to handle the relentless stresses of the road and provide superior structural integrity for many years to come.

2 A steel cage cockpit gives the Roadmaster chassis incomparable strength and safety in the front of the coach.

3 Every Roadmaster chassis features a steel firewall for added protection in the cockpit.

4 Stacked aluminum intercooler and radiator for optimum heat transfer and cooling.

5 Dual fuel fill allows you to fill the tank from either side of the coach, for greater convenience and flexibility at the pump.

ROADMASTER RAISED RAIL RR8R CHASSIS

The 2008 Ambassador owes its remarkable performance to the Roadmaster Raised Rail RR8R Series chassis. You'll marvel at the seamless ride and handling that's only possible in a chassis that's designed exclusively for a luxury motorcoach and custom-built to the exact specifications of each floorplan. We invite you to take a few minutes and discover all the ways Roadmaster offers you the very best in safety, reliability, comfort and convenience.



9-LAYER ROOF (top to bottom)

- One-piece peaked fiberglass roof
- Luaun backing
- Thick, tapered bead foam insulation
- Aluminum double I-beam superstructure filled with fiberglass insulation
- Vapor barrier
- Structure foam: thermal insulative barrier
- 1/2" bead foam insulation
- Foam padding for extra insulation
- Padded vinyl ceiling

6 Eight outboard-mounted air bags work in conjunction with eight gas-powered shock absorbers to prevent road trauma from ever reaching the coach.

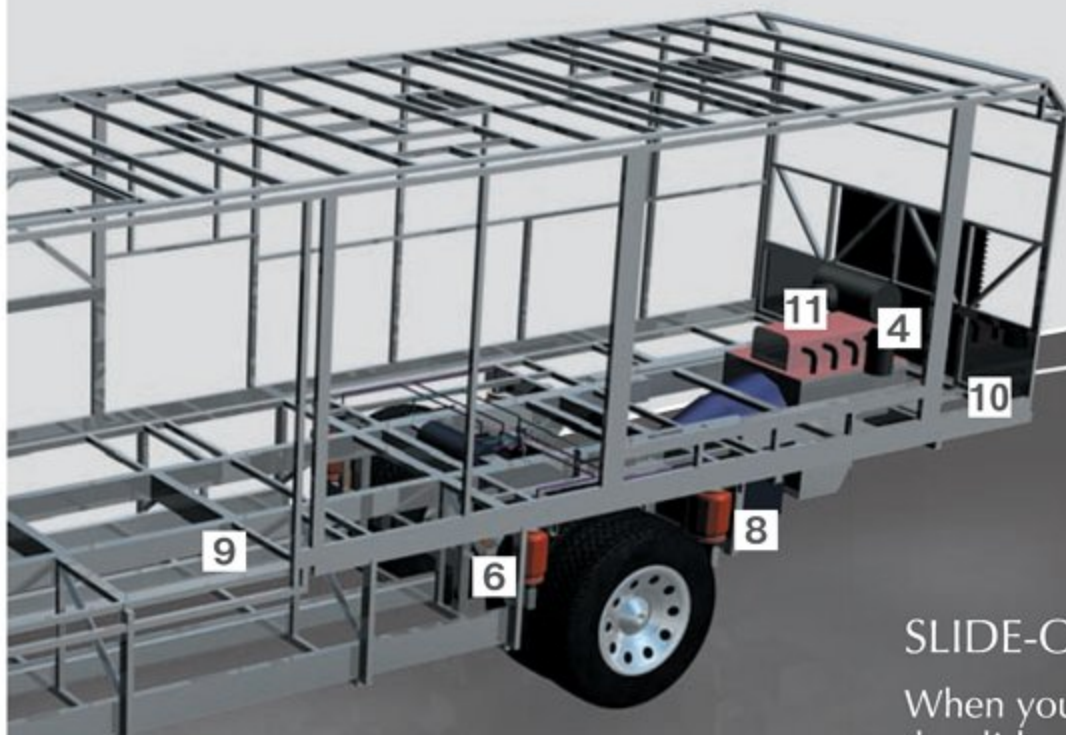
7 This steel truss system is engineered as part of the chassis and provides outstanding strength and rigidity, as well as the convenience of pass-through storage. To prevent corrosion, the structure is pre-primed and coated with rust-inhibiting paint.

8 Monitored leveling sensors continually adjust the air pressure at each axle to maintain a level ride and eliminate nosediving, weight transfer and floating on curved roads. This system also stabilizes the coach on uneven surfaces.

9 The exclusive raised rail design provides for larger full pass-through storage bays with flush floors. Other features include a 3/8" thick frame rail — compared to the 1/4" of other manufacturers.

10 A 10,000 lb. tow hitch rating is the highest in its class.

11 The Ambassador features a gutsy standard Cummins® ISC 360 diesel engine with Allison® 3000 MH 6-Speed World Transmission and electronic shifter.

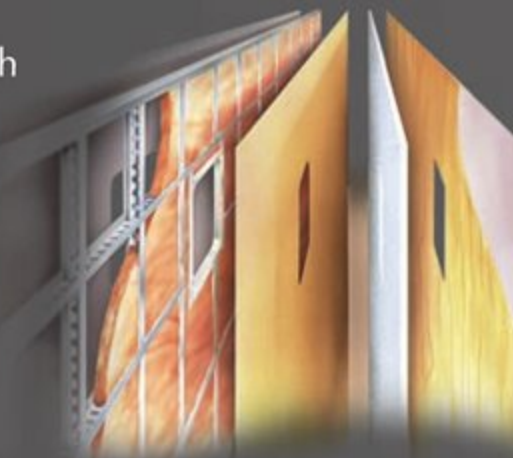


SLIDE-OUT CONSTRUCTION

When you purchase a Holiday Rambler, you can be sure the slide-out boxes are some of the strongest and most reliable you'll find anywhere. They feature our exclusive multi-layer construction to give you maximum insulation and to reduce the chance of warping, twisting or shifting.

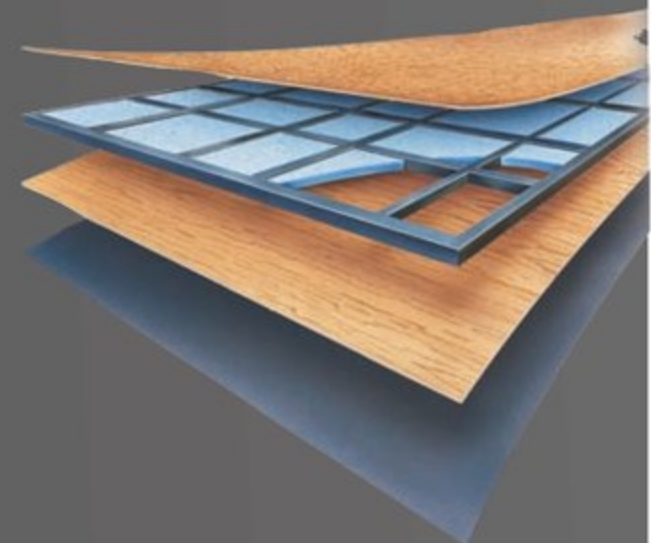
5-LAYER EXTERIOR WALL (left to right)

- Gel coat fiberglass
- Interlocking C-Channel filled with 1-1/2" fiberglass insulation glued in place so it doesn't sag or leave spaces uninsulated
- Vapor barrier
- Bead foam saves energy and provides a thermal insulative barrier
- Interior paneling



5-LAYER FLOOR (top to bottom)

- Structurwood™
- 1-1/2" x 1-1/2" square tubular frame
- Blue foam
- Luaun
- 3-Ply Backer





BODY CONSTRUCTION: FEATURES

- Alumaframe® Superstructure
- Steel Cage Cockpit Construction
- Peaked One-Piece Fiberglass Roof with Fiberglass Insulation
- Panaview™ 1-Piece Front Windshield
- Interior Height 84"
- Front and Rear Molded Fiberglass Cap
- One-Piece Generator Access Door
- Electric Flush-Floor Stepwell Cover
- Dual Head Power Controlled Heated Exterior Mirrors with Turn Indicator Lights
- Side-Hinged Baggage Doors
- One-Piece Polyethylene Pass-Through Storage Compartment
- Wheel Mud Flaps
- Full-Length Mud Flap
- 3M Film Front Mask
- Deluxe Full-Body Paint
- Roof Ladder
- Undercoating

OPTIONS

- Storage Bay Slide-Out Tray, Pass-Through
- Slide-Out Battery Tray

CHASSIS/ENGINE/SUSPENSION: FEATURES

- Roadmaster Raised Rail Chassis RR8R
- Cummins® ISC 360 Engine with Allison® 3000 MH 6-Speed World Transmission and Electronic Shifter
- Engine Displacement: 8.3L/506 Cu. In.
- Torque: 1,050 lbs./ft. Max. Net at 1,400 RPM
- Aluminum Rear-Mounted Radiator with CAC Cooler
- Dual Fuel Fill
- 160 Amp Alternator
- Rear Axle Ratio: 4:30-1
- Radial Tires: 275/70R/22.5
- Polished Aluminum Wheels
- Cushion Air Glide Suspension with 8 Outboard-Mounted Air Bags and 8 Shock Absorbers
- Anti-Lock Braking System with Full Air Brake
- Automatic Traction Control
- Exhaust Brake
- Auto Slack Adjusters
- Prewire for Supplemental Braking System
- Engine Block Heater
- Automatic 3-Point Leveling System
- 10,000 Lb. Hitch Receiver with Dual Connector (4-Pin or 7-Pin)

COCKPIT: FEATURES

- Automotive Dash with Brushed Gray Instrumentation Panel
- In-Dash AM/FM/CD Stereo Radio with Sirius-Ready Compatibility and Weather Band
- Rear Vision System with Audio and Adjustable Camera
- Adjustable Brake and Accelerator Pedals
- Intermittent Windshield Wipers
- 4-Spoke Steering Wheel with Horn Pad and Logo
- Air Horns
- Power Sunvisors
- Pilot and Co-Pilot Side Window Pull-Down Sunshades
- Ultraleather™ Six-Way Power Pilot Seat
- Ultraleather™ Six-Way Power Co-Pilot Seat with Powered Footrest
- Carpeted Driver and Passenger Floor Mats

OPTIONS

- Interior Solar Privacy Sunscreens
- Sirius Radio Satellite System (Requires Subscription)
- 3-Camera Rear Vision System with Audio and Adjustable Center Camera
- GPS System
- Aladdin™ Junior System
- Auxiliary Blower

APPLIANCES AND ACCESSORIES: FEATURES

- Norcold® 12 Cu. Ft. 2-Way 4-Door Refrigerator with Ice Maker
- High-Output 3-Sealed-Burner Cooktop
- Spacesaver Convection Microwave
- 32" LCD TV in Front Cockpit Overhead (N/A: 40SKQ)
- 37" LCD TV in Living Area Hutch (Replaces Front Cockpit TV) (40SKQ)
- 20" LCD TV with Remote Control in Bedroom
- Home Theater System
- Exterior Hook-Ups for DSS Dish and Cable
- CB Prep
- Digital Satellite System Prep
- Interior Cable TV Hook-Up and Telephone Jacks
- Washer/Dryer Prep

OPTIONS

- High-Output 3-Sealed-Burner Range with Oven
- Combination Washer/Dryer
- Dometic Sidewise 14 Cu. Ft. 2-Way Refrigerator with Water and Ice Dispenser in the Door (40SKQ)

- Stainless Steel Package (Includes Stainless Steel Refrigerator and Microwave)
- Bedroom DVD Player
- Central Vacuum
- Semi-Automatic Digital Satellite Dish System
- Fireplace (40SKQ)
- Exterior Entertainment Center (26" LCD/AM/FM/CD Radio with Two Speakers) (N/A: 40SKQ)

INTERIOR: FEATURES

- Raised Panel Hardwood Cabinet Doors
- Hardwood Cabinet End Panels
- Refrigerator Raised Panel Hardwood Inserts
- Heavy-Duty Ball Bearing Drawer Guides
- Metal Interior Grab Handle on Dash at Entry Door
- Satin Nickel Finish Cabinetry Hardware and Bath Accessories
- Polished Radius Solid Surface Kitchen Countertop with Stainless Steel Sink with Two Sink Covers
- Solid Surface Radius Bath Lavatory Countertop with Integrated Bowl
- Flip-Up Countertop Extension for Lavatory in Rear Bathroom (40DFT)
- All Other Countertops Laminated with Solid Surface Edge
- Solid Surface Kitchen Galley and Bathroom Lavatory Backsplash with Decorative Glass Insert
- Ceramic Tile in Kitchen, Bath and Entryway
- Textured Style Nylon Carpeting with Pad in Living Area and Bedroom
- Hardwood Slide-Out Fascia Design with Fluted Accents and Decorative Center Block
- TV Hutch Cabinet in Living Area with Decorative Glass (40SKQ)
- Medicine Cabinet with Adjustable Shelves (N/A on Angled Cabinets)
- Oversized Rear Wardrobe Closet with Deluxe Mirrored Door Frames Satin Nickel, with Decorative Hardwood Header (N/A: 40PLQ)
- Bedroom Wardrobe Slide-Out Foot of Bed
- Day/Night Pleated Blackout Shades in Living Area and Bedroom
- Mini Blinds in Kitchen and Bathroom
- Soil Repellant Protection on Fabric

OPTIONS

- Decors: Stardust, Super Natural, Spring Mist
- Full-Tile Living Room
- Wood Choice: Newport Cherry, Champagne Select

FURNITURE: FEATURES

- Queen Bed with Overhead Cabinet and Nightstands
- Arched Back Wood Booth Dinette, with Side-Sliding Dinette Tabletop (N/A: 40DFT)
- Freestanding Dinette with Full-Length Wall Cabinet, Two Freestanding Chairs and Two Folding Chairs (40DFT)
- Roadside: Fabric Easy Bed Sofa
- Curbside: Fabric Easy Bed Sofa
- Bedroom: Curbside Desk with Leatherette Euro-Recliner and Ottoman (40PLQ)

OPTIONS

- Queen Bed Select Comfort Air Mattress
- Roadside: Fabric Hide-A-Bed Sofa with Air Mattress (N/A: 40PLQ)
- Roadside: Wraparound Computer Desk with Ultraleather™ Euro-Recliner (38PDQ, 40PLQ)
- Roadside: Ultraleather™ Sectional Booth Dinette Ensemble (40SKQ)
- Curbside: Ultraleather™ Easy Bed Sofa
- Curbside: Ultraleather™ Hide-A-Bed Sofa with Air Mattress (38PDQ, 40PLQ)
- Freestanding Dinette with Full-Length Wall Cabinet, Two Freestanding Chairs and Two Folding Chairs (N/A: 40DFT)



ELECTRICAL SYSTEMS AND LIGHTS: FEATURES

- 50 Amp 120V Distribution Panel and Manual Retracting Power Cord Reel
- Energy Management System
- 2,000 Watt Inverter
- Onan® 8.0 kW QD Diesel Generator
- Four 6V House Batteries
- Two 12V Heavy-Duty Chassis Batteries
- Battery Disconnect Switch at Front Door
- Porch Light and Exterior Step Light on Same Switch
- Exterior Power Entry Step with Light
- Interior Stepwell Entry Step Lights
- Lights in Outside Storage Compartments
- 120V Receptacles in Outside Storage Compartment
- Underhood Utility Light
- Convenience Center in Hallway
- Decorative Lighting

OPTIONS

- Exterior Tank Monitor Gauge in Wet Bay

PLUMBING AND LP SYSTEMS: FEATURES

- Single Lever Satin Nickel Faucet with Pullout Sprayer in Kitchen Galley
- Central Water Filtration System
- Demand Water System and Water Pump
- Water Pump Switch in Convenience Center, Kitchen Galley and Service Bay Area
- 10-Gallon LP Gas/Electric Water Heater with Electronic Ignition, DSI
- Winterization Valving System
- Water Heater Bypass Valving
- China Toilet Electronic Silent Plus (Rear Bath) (40DFT)
- China Toilet Electronic Silent Plus (40SKQ)
- China Toilet
- No-Fuss Flush Holding Tank Rinsing System
- Insulated Systems Compartment with Easy Access to Hook-Up
- Shower inside Wet Bay with Hot/Cold Water
- Soap Dispenser inside Utility Bay
- Gravity and Pressurized Water Fill
- Contained Storage Area for Sewer Hose (N/A with RV Sani-Con System Option)
- One-Piece Neo-Angled Shower with Obscured Glass Door (N/A: 40DFT)
- One-Piece Pear-Shaped Tub with Obscured Glass Door (40DFT)
- Satin Nickel Shower Faucet with Slide Bar and Shut-Off Valve at Shower Head

OPTIONS

- RV Sani-Con 1 System, Holding Tank Flush System (This Option Replaces Contained Storage Area for Sewer Hose)
- Power Water Hose Reel
- Neo-Angled Bathtub (N/A: 40DFT)

HEATING, VENTS AND AIR CONDITIONING: FEATURES

- Dual 13.5M BTU Roof Air Conditioner with Ducted Air, Heat Pumps, and Digital Thermostat Control
- Electronic Ignition Furnace (One 31M BTU and One 20M BTU)
- Electronic AC/Heat Climate Control System
- Kitchen Powered 12V Attic Fan with Wall Control of Automatic Dome and Fan Power
- Bath Powered 12V Attic Fan with Wall Control of Automatic Dome and Fan Power
- 12V Heater in Wet Bay

OPTIONS

- Ceiling Fan in Bedroom (N/A: 38PDQ)
- Dual 15M BTU Roof Air Conditioner with Ducted Air, Heat Pump, and Digital Thermostat Control

WINDOWS, DOORS AND AWNINGS: FEATURES

- Radius Flush-Mounted Dual Pane Safety Glass Dark Tinted Slider Windows
- Automatic Front Door Awning
- Front Entry Door with Removable Screen and Anti-Skid Steps
- Automatic Patio Awning
- Topper Slide-Out Awnings Living Area and Bedroom
- Window Awnings on All Slide-Out House Windows, except Kitchen Windows and Slide-Out Windows under Patio Awning
- Tinted Skylight in Bathroom with Protecta Glaze

OPTIONS

- Keyless Entry (Key Fob Only)
- Bedroom Skylight with Shade (40PLQ)

SAFETY: FEATURES

- Fire Extinguisher
- Deadbolt Lock on Entrance Door
- 120V GFI Protected Circuit Kitchen, Bath and Exterior
- LP Gas Detector
- Smoke Detector
- Carbon Monoxide Detector
- Driver and Passenger Three-Point Seatbelts
- Third Brake Safety Light
- Egress Window

Due to continuous product improvement, please see the website for the latest in standards and options, specifications, and technical data. Go to www.holidayrambler.com.

Weights (Lbs.)*	38PDQ	40SKQ	40DFT	40PLQ
Gross Vehicle Weight Rating	33,000	33,000	33,000	33,000
Gross Combined Weight Rating	43,000	43,000	43,000	43,000
Gross Axle Weight Rating (Front)	13,000	13,000	13,000	13,000
Gross Axle Weight Rating (Rear)	20,000	20,000	20,000	20,000

Measurements

Wheelbase	237"	261"	261"	261"
Overall Length	38' 11"	40' 11"	40' 11"	40' 11"
Overall Height (Including A/C)	12' 6"	12' 6"	12' 6"	12' 6"
Interior Height (Increased Height to 84")	84"	84"	84"	84"
Interior Width	94.5"	94.5"	94.5"	94.5"
Exterior Width	100.5"	100.5"	100.5"	100.5"

Tank Capacity (Gal.)**

Water Heater	10	10	10	10
Gray Tank	62	62	62	62
Black Tank	40	40	40	40
Fresh Tank	100	100	100	100
Fuel Tank	100	100	100	100
LP Tank***	39	39	39	39

* Towing capacity is limited by GCWR; your vehicle's towing capacity is the difference between the GCWR and the actual vehicle weight, including all water, fuel, passengers and cargo. Your towed vehicle should be equipped with auxiliary brakes if the weight of the towed vehicle exceeds 1,000 lbs. Consult your Owner's Manual for further towing information.

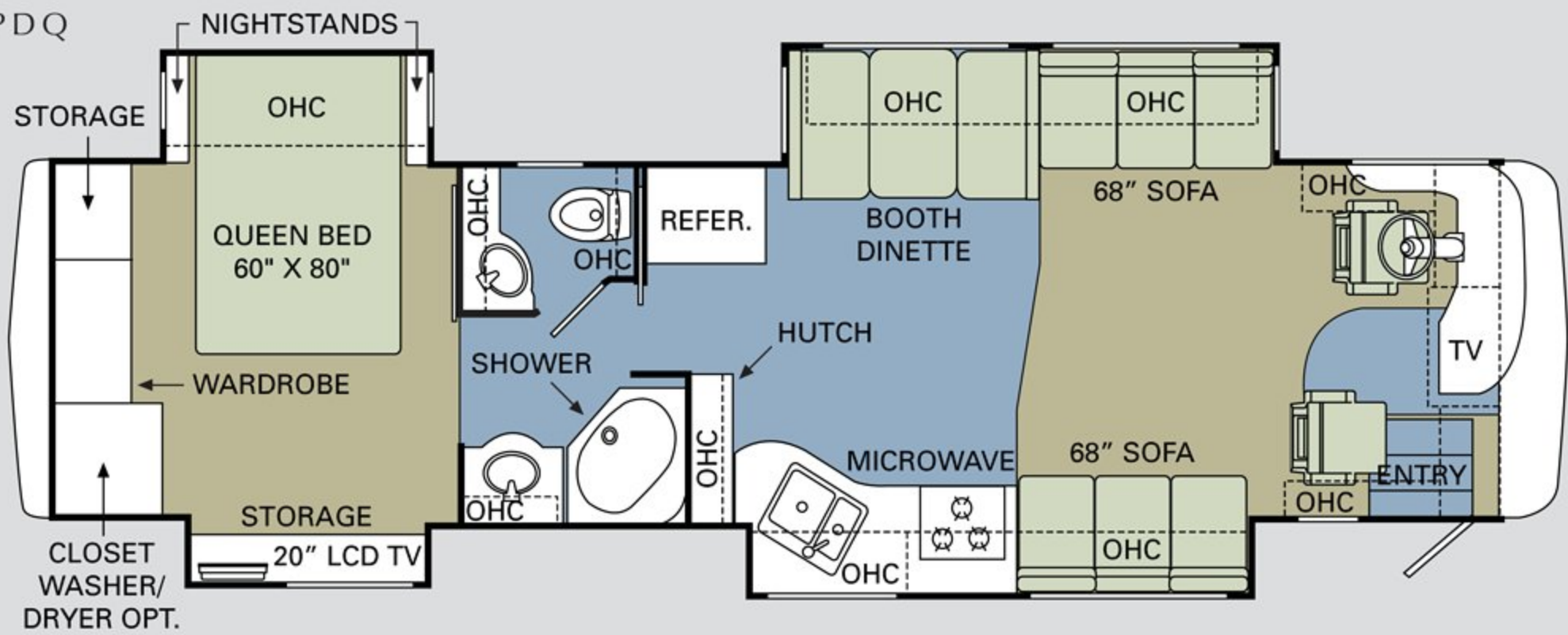
** All tank capacities are estimated based upon calculations provided by the tank manufacturers and represent approximate capacities. The actual "usable capacity" may be greater or less than the estimated capacities based upon fabrication and installation of the tanks.

*** Actual filled LP capacity is 80% of listing due to safety shut-off required on tank.

The actual overall length of the recreational vehicle may differ from that indicated in the brochure due to variances in the manufacturing process and/or installed components. The actual length may be greater or less than that indicated. Due to the large variety of options and floorplan arrangements available to our customers, actual weights for each unit can differ significantly. Holiday Rambler provides a weight sticker on each unit we produce which includes that unit's tank capacities and approximate weight. Consult your local Holiday Rambler dealer for unit availability and further information. The information printed in this brochure reflects product design, fabrication, and component parts at the date of printing. The manufacturer reserves the right, at any time, to make changes in product design or material or component specifications as its sole option, without notice. This includes the substitution of components of a different brand or trade name which will result in comparable performance. All information printed in this brochure is subject to change after the date of printing. Some features shown or mentioned in this brochure are optional and may only be available in selected floorplans. Photographs may show props or decorations that are not standard equipment on Holiday Rambler models. Holiday Rambler, the Holiday Rambler logo and its design, are registered trademarks. All other products and company names are trademarks and/or registered trademarks of their respective holders. While the color of the motorhome's exterior and the interior fabrics depicted in this sales brochure are fair and reasonable depictions, the colors depicted may not be an exact match of the actual colors because of the variances in photo-processing and variances caused by inserting the photographs within the sales brochure. Due to product improvements, changes during the model year and/or transcription errors that may occur, information represented within this brochure may not be accurate at the time of your purchase. If certain information is significant to your purchasing decision, please confirm the information with your dealer prior to submitting your order. Component part and appliance manufacturers issue limited warranties covering those portions of the recreational vehicle not covered by the Limited Warranties issued by Monaco Coach Corporation. To learn which specific component parts and appliances are excluded from the Limited Warranties issued by Monaco Coach Corporation, please contact your selling dealership or Monaco Coach Corporation directly, or review the warranty packet inside the recreational vehicle.

2008 FLOORPLANS ■ CARPET ■ TILE

38PDQ



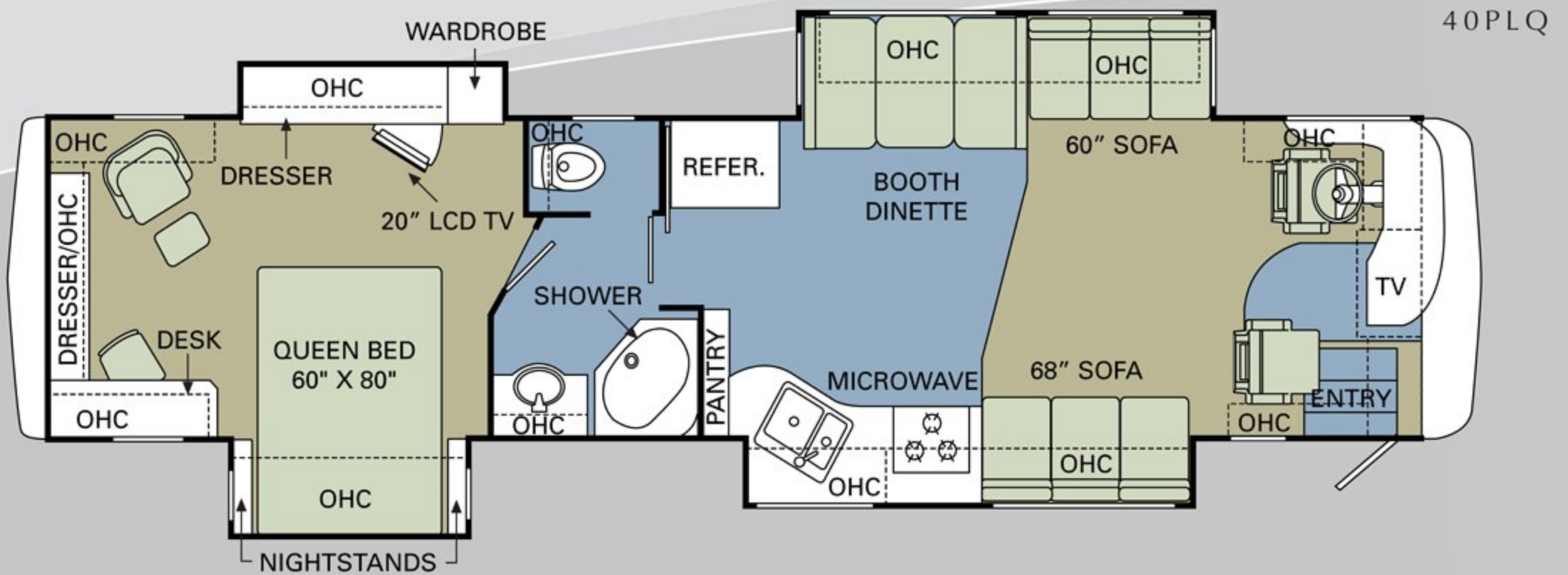
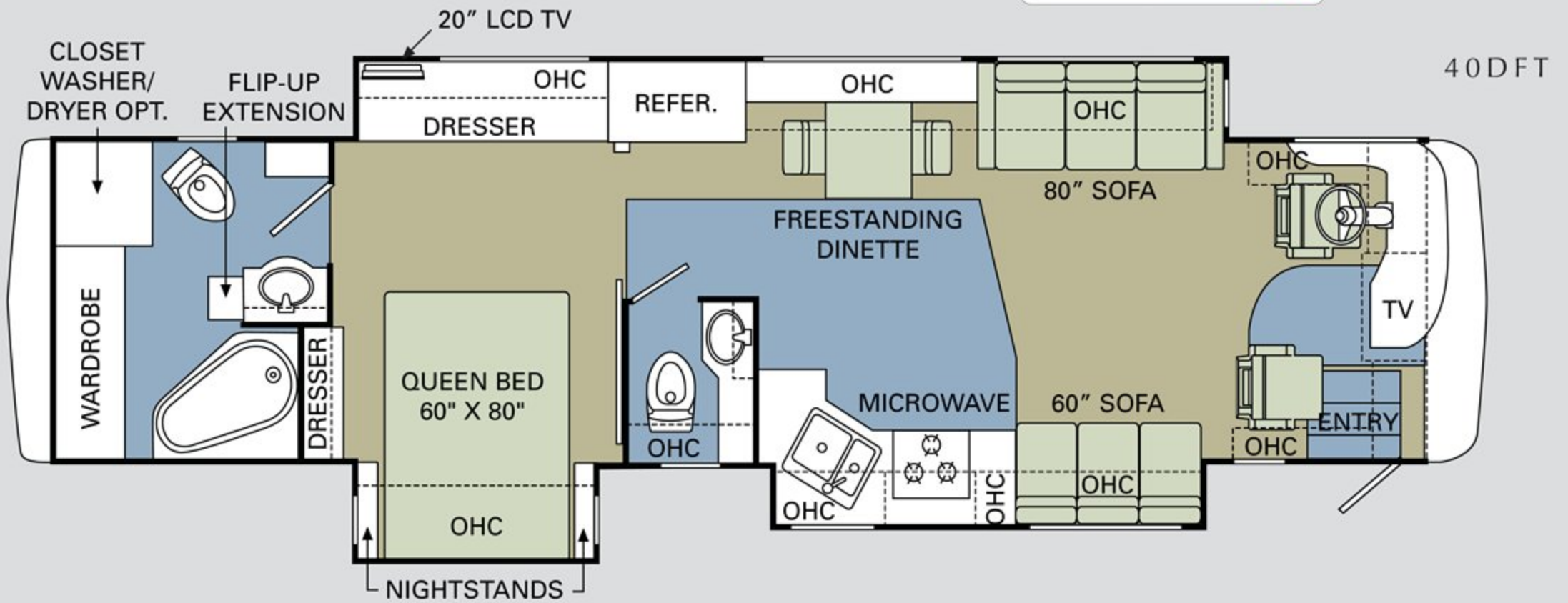
40SKQ



EXCLUSIVE HYDRAULIC

FULL-WALL SLIDE

▼ PANASUITE



HOLIDAYRAMBLER.COM

Log on to our website anytime, night or day. It's your link to everything Holiday Rambler, including product news and updates, club events, dealer and service center info and much more. Take it for a test drive today.



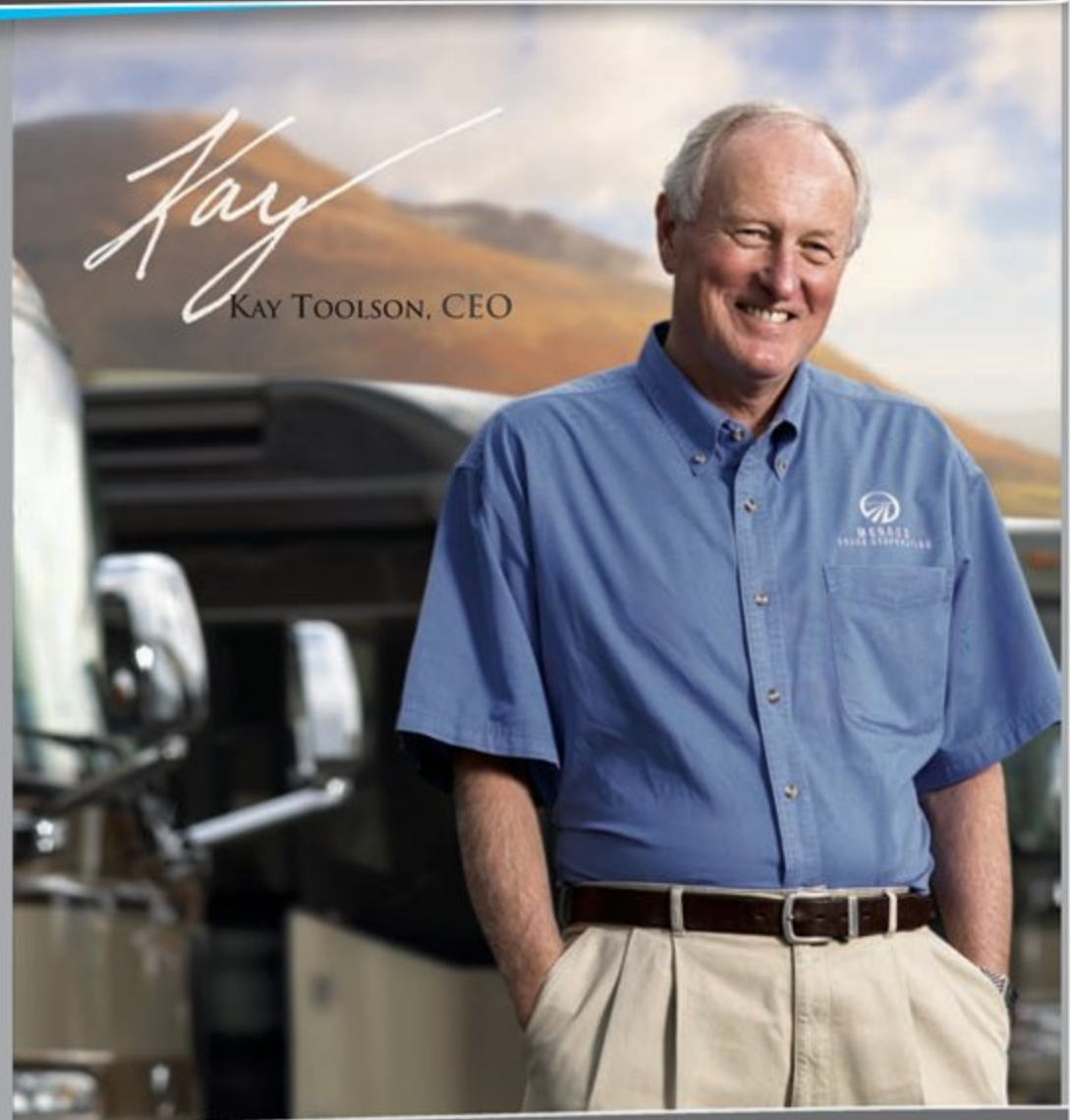


AMBASSADOR®
2008

BEING DIFFERENT MAKES ALL THE DIFFERENCE.

At Monaco Coach Corporation, we always strive to be the best. And that means thinking outside the box. Giving you more of what you want in an RV. Like our exclusive Roadmaster chassis. PanaSuite™ full-wall slides. And programs like Monaco Financial Services and 24/7 roadside assistance. No other manufacturer can match Monaco's offerings. No one even comes close. Why not discover the difference for yourself? Visit www.monacodifferent.com.

**"No other manufacturer can match Monaco's offerings.
No one even comes close."**



WARRANTIES

12 MONTH/24,000 MILE basic limited warranty

5 YEAR/50,000 MILE limited warranty on aluminum or steel frame structure of sidewall, roof, front and rear cap

3 YEAR/50,000 MILE limited warranty on Roadmaster chassis

Applies to certain models. See owner's manual for complete details.



HOLIDAY RAMBLER®

This is Living.



MONACO COACH CORPORATION

606 Nelson's Parkway Wakarusa, IN 46573
www.holidayrambler.com | 800-245-4778



Monaco is traded on the New York Stock Exchange under the listing MNC.
© 2007, Monaco Coach Corporation 07/07 NPN:BROHAMB Litho in USA.