



# MIRADA

BY COACHMEN

MIRADA  
BY COACHMEN



[CoachmenRV.com](http://CoachmenRV.com)

# THE COACHMEN ADVANTAGE

What is the Coachmen advantage? It's the collection of unique features offered in a Coachmen motorhome to ensure a smoother ride, a better camping experience, and a motorhome that will last for years.

## 1. NOBLE SELECT™

Protected by a three-year warranty, these sidewalls have a high-gloss gelcoat finish to prevent fading. They are also 20% lighter than wood substrate sidewalls, provide more occupant cargo carrying capacity, and offer three times the insulation against extreme climates.

## 2. AZDEL™ COMPOSITE

Most manufacturers use wood sidewalls that can expand, swell, and eventually mold. We use Azdel. It's impervious to water, won't rot or mold, and, with less than a 1% chance of delaminating, it ensures the long-term integrity of the sidewalls.

## 3. REINFORCED LAMINATION

We vacuum bond and pinch roll every sidewall and roof, then perform a pull adhesion test. Most manufacturers just do one process or the other, but by doing both we improve the strength and longevity of the sidewalls.

## 4. ELONGATED WHEELBASE

We offer longer wheelbases than other motorhome manufacturers because that means superior weight distribution. The result? Better handling and a smoother ride that results in less driver fatigue.

## 5. SIGHT RITE DASH™

Our dashes are angled 20 degrees forward. This increases the line of sight for the driver, and offers the best road visibility in the market.

## 6. EVEN COOL DUCT™

Our patented duct system evenly disperses air through the whole coach. And we use Amaco ducting instead of Styrofoam because it's antimicrobial, preventing the growth of bacteria and ensuring a cool, clean coach in scorching heat.

## 7. DIGITAL OWNER'S MANUAL

Our owner's manuals are easy to access through the Coachmen website or our free app. Supplemented with videos, PowerPoints, and more, it's got all you need to know about your coach.

## EXTERIOR COLOR OPTIONS



Partial Paint with Graphics –  
(Standard)



Full Body Paint –  
Cobalt (Optional)



Full Body Paint –  
Shiraz (Optional)



Full Body Paint –  
Sierra (Optional)

## INTERIOR DÉCOR COLOR SELECTIONS



Nantucket



Chesapeake

## INTERIOR WOOD COLOR SELECTIONS



Sumatra



Beachwood



# DON'T SETTLE FOR MIDDLE-OF-THE-ROAD.

MIRADA IS FOR MOTORHOME ENTHUSIASTS WHO APPRECIATE THE FINER ASPECTS OF HIGHWAY LIFE — AT A SURPRISINGLY AFFORDABLE PRICE.



Entertaining is a breeze with a beautifully appointed kitchen. The exterior kitchen (available in select floor plans) and outdoor entertainment system are perfect for taking the party outside. When not entertaining friends, stay connected with them from the dash computer workstation, complete with 12V, 110V, and USB outlets. There's even room for the kids to sleep over with the drop-down cabover bunk.



Spacious exterior storage compartments make it easy to haul extra gear without taking up extra space inside.

An outdoor entertainment system — complete with an LED TV and integrated awning speakers — is a great way to take advantage of the great outdoors.

15,000 BTU A/C's with heat pumps keep you cool in the summer and warm in the winter.

Navigating through tight spaces and backing up is a breeze with Mirada's backup monitor and side cameras.





Photography features the Mirada 32SS floorplan with Chesapeake decor and Beachwood cabinets.





The upgraded foam package in our leatherette dinette provides the perfect setting for dinner with guests.

Living room TV and Fireplace (available in select floorplans) provides an elegant feel in the Mirada.

Built from stainless steel and porcelain, the bathroom is both appealingly designed and super-easy to clean.

Equipped with a comfortable mattress and designer headboard with coordinating bedspread and shams, Mirada's bedroom is the perfect place to sleep after a day in the woods or on the town.

The bedroom features a spacious wardrobe and side tables to keep clutter at bay and has a 32" LED TV.

The Coach-Pap™ Station allows for storage of CPAP machines and other electronics, located in the cabinet above the bed.

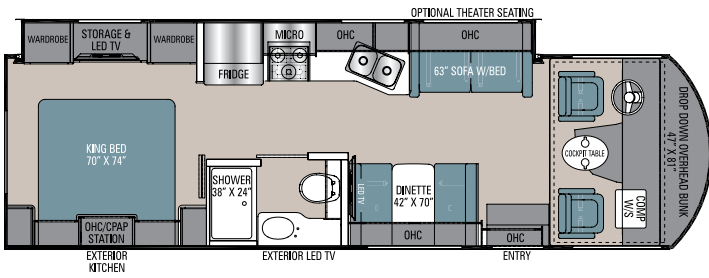
The chaise lounge sofa is standard in the Mirada 32SS and 35LS. It is ideal for multiple people to sit back and enjoy a movie after a long day on the road.

Convert the sofa into a bed to provide even more sleeping capacity.

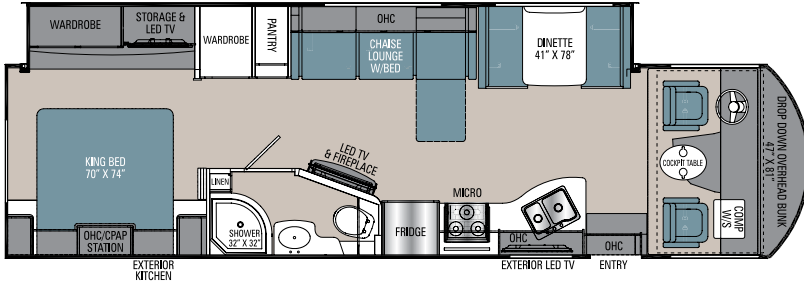


# FLOORPLANS

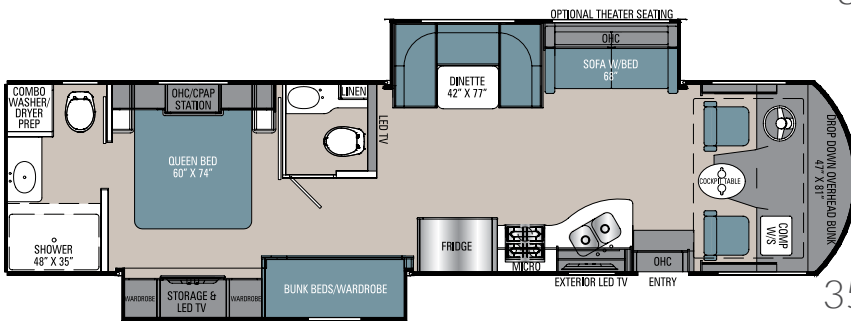
Mirada is available in six floorplan options, so you can choose the one that best suits your preferences.



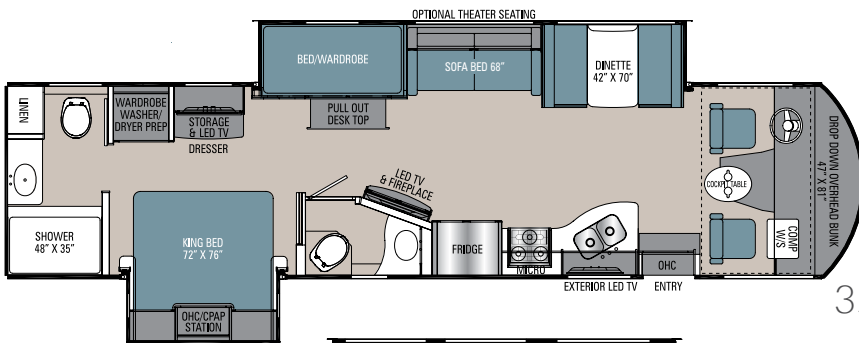
29FW



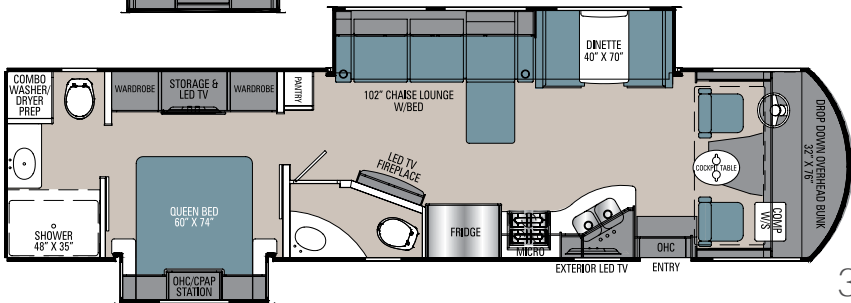
32SS



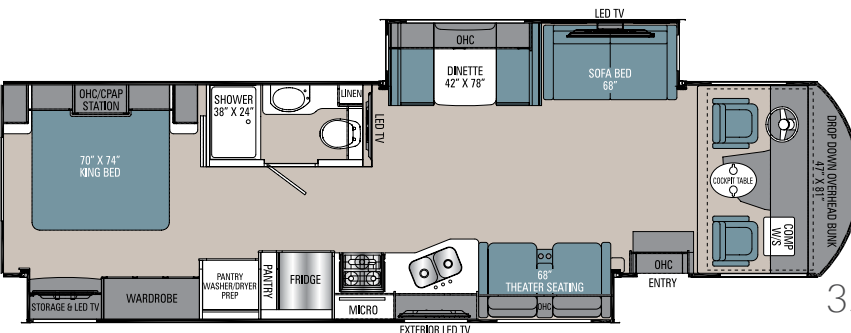
35BH



35ES



35LS



35OS

## STANDARD FEATURES

### INTERIOR APPOINTMENTS

Solid Surface Kitchen Countertop  
Premium Linoleum Throughout  
Brushed Nickel Hardware  
Hardwood Cabinet Doors/Flat Panel  
Self Closing Ball Bearing Drawer Guides  
Throughout  
Frameless Tinted Windows with Safety Glass  
Reclining/Swivel Pilot Seats  
Visionary Sofa Hide-A-Bed  
Theater Seating (35OS)  
Solar Privacy Shades Throughout  
Easy Clean Cockpit Floor  
Power Windshield Shade  
with Manual Side Shade

### INTERIOR EQUIPMENT

Wi Fi Ranger  
Radio AM/FM/Bluetooth  
Pre-Wired for Satellite Dish and Blu-ray Players  
Cable TV Jack  
LP Leak Alarm and Smoke Detector  
Carbon Monoxide Detector  
Fire Extinguisher  
King Jack TV - Radio Antenna  
40" TV coach  
50" TV Main coach (35OS)  
Horseshoe Booth Dinette (35BH)  
Dream Dinette (29FW, 32SS, 35LS, 35OS, 35ES)  
Fireplace Electric (32SS, 35LS, 35ES)  
Charging Station for Electronic Devices

### GALLEY

High Rise Kitchen Faucet  
Double Bowl Stainless Kitchen Sink  
Solid Surface Sink Covers  
Stainless Residential Refrigerator (N/A 29FW)  
Stainless Steel, Large Double Door Refrigerator  
12 Volt (29FW Only)  
Stainless Steel 3-Burner Range with Glass cover  
Stainless OTR Microwave  
Tile Backsplash

### BATH AND WATER

Stainless Lavatory Sink  
Porcelain Toilet with Foot Flush  
One Piece ABS Shower Surround  
Glass Shower Door  
Power Bath Vent  
6-Gallon (Gas/Electric) D.S.I. Water Heater  
Demand Water Pump  
Skylight Over the Shower  
Stackable Washer/Dryer Prep (35OS, 35ES)  
Combo Washer/Dryer Prep (35BH & 35LS Only)  
Whole Coach Water Filter (EXC. CSA)

### SLEEPING

Queen Bed (35BH, 35LS)  
King Bed (29FW, 32SS, 35OS, 35ES)  
CPAP Cabinet  
Designer Headboard (29FW, 32SS, 35OS)  
32" LED TV bedroom  
Manual Drop-Down Front Bed (35LS Only)  
Power Drop-Down Front Bed  
(29FW, 32SS, 35BH, 35OS, 35ES)

### ELECTRICAL/HEATING/AC

30' 50-Amp Power Cord  
55-Amp, 110/12 Volt Power Converter  
GFI Circuit  
Outside Receptacle (DS)  
Emergency Start Switch  
Lighted Trunk Boxes  
Exterior LED Strip Light  
30,000 BTU E.I. Furnace  
15,000 BTU A/C with Heat Pump Front  
15,000 BTU A/C with Heat Pump Rear  
Dual Coach Batteries  
5.5 Onan Generator  
Coach Command Center  
Automatic Transfer Switch  
1000 Watt Inverter with Two 6 Volt Batteries  
(N/A 29FW)  
Auto Generator Start (N/A 29FW)  
Solar Panel Hookup

### AUTOMOTIVE/EXTERIOR

Auxiliary Dash Fans  
Tilt Steering Wheel  
Cruise Control  
Intermittent Wipers  
Dash Air Conditioning  
19.5 Radial Tires  
Rear Mud Flaps Only  
Power Entrance Step-Double  
Crowned, Laminated Fiberglass Roof  
Full Basement with Pass Thru Storage  
Radius Trunk Doors with Slam Latch  
Fiberglass Front Cap & Rear Cap  
Dead Bolt Lock-Entrance Door  
26" Radius Entry Door  
Power Patio Awning  
5,000 Towing Hitch with 7-Way Plug (29FW)  
8,000 Towing Hitch with 7-Way Plug  
(32SS, 35BH, 35LS, 35OS, 35ES)  
Back Up Monitor with Side Cameras  
Rear Mounted Roof Ladder  
Power Heated Mirror  
Stainless Steel Wheel Liners  
Automatic Leveling Jacks  
Slide-Out Room Awnings  
20-Gallon LP Tank  
Valve Stem Extenders  
Exterior Kitchen (29FW and 32SS Only)  
Oval Cockpit Pedestal Table  
Computer Work Station at Passenger Seat  
High Gloss Gelcoat Sidewalls  
(with Azdel™ Superlight Composite)  
Exterior Propane Hook-Up  
Exterior Bluetooth - TV Audio Speakers  
Outside Entertainment Center with TV

## OPTIONAL FEATURES

### INTERIOR COLOR SELECTIONS

Nantucket  
Chesapeake

### INTERIOR WOOD COLOR SELECTIONS

Sumatra  
Beachwood

### EXTERIOR COLOR SELECTIONS

Fiberglass with Partial Paint (Standard)  
Full Body Paint (Optional)

- Cobalt
- Shiraz
- Sierra

### OPTIONAL FEATURES

6 Way Power Driver Seat  
32" LED TV Galley Overhead Cabinet (35BH Only)  
Dual Pane Windows  
Theater Seating (29FW, 35BH, 35ES)  
Power Theater Seating Upgrade (35OS, 35ES)  
Diamond Shield Paint Protection -  
(Required with Full Paint)  
CSA Upfit  
CD-MVSA (Canadian Motor Vehicle Safety Act)<sup>1</sup>  
Travel Easy Roadside Assistance -  
provided by Coach-Net

#### Notes:

<sup>1</sup> *Mandatory For All Canadian Provinces*

## MIRADA SPECIFICATIONS

CLASS A GAS	29FW	32SS	35BH	35ES	35LS	35OS
FORD ENGINE V-10 6.8L 3-VALVE	320 HP/460 TRQ	320 HP/460 TRQ	320 HP/460 TRQ	320 HP/460 TRQ	320 HP/460 TRQ	320 HP/460 TRQ
WHEEL BASE	190"	228"	242"	242"	242"	242"
GVWR	18,000 lbs	20,500 lbs	22,000 lbs	22,000 lbs	22,000 lbs	22,000 lbs
GCWR	23,000 lbs	26,000 lbs	26,000 lbs	26,000 lbs	26,000 lbs	26,000 lbs
FUEL CAPACITY	80 gal	80 gal	80 gal	80 gal	80 gal	80 gal
LP GAS CAPACITY	20 gal	20 gal	20 gal	20 gal	20 gal	20 gal
FURNACE (BTUs)	30,000	30,000	30,000	30,000	30,000	30,000
EXTERIOR LENGTH (w/o Ladder)	30' 7"	34' 10"	36' 10"	36' 10"	36' 10"	36' 10"
EXTERIOR HEIGHT (w/A/C)	12' 5"	12' 5"	12' 5"	12' 5"	12' 5"	12' 5"
EXTERIOR WIDTH	102"	102"	102"	102"	102"	102"
FRESH WATER	50 gal	70 gal	70 gal	70 gal	70 gal	70 gal
GREY WATER	46 gal	45 gal	45/45 gal	45/45 gal	45 gal	45 gal
BLACK WATER	46 gal	45 gal	45/45 gal	45/46 gal	45/45 gal	45 gal
WATER HEATER	6 gal	6 gal	6 gal	6 gal	6 gal	6 gal
AWNING SIZE	20'	15' & 10'	12'	17'	18'	20'
EXTERIOR STORAGE	131 cu. ft.	125 cu. ft.	105 cu. ft.	105 cu. ft.	126 cu. ft.	145 cu. ft.

**GVWR (Gross Vehicle Weight Rating)** is the maximum permissible weight of the unit when fully loaded. It includes all weights, inclusive of all fluids, occupants, cargo, optional equipment and accessories. For safety and product performance do NOT exceed the GVWR.

**GCWR (Gross Combined Weight Rating)** is the maximum permissible loaded weight of your motor home and any towed trailer or towed vehicle. Actual GCWR of this vehicle may be limited by the sum of the GVWR and the installed hitch receiver maximum capacity rating; see hitch rating label for detail.

**GAWR (Gross Axle Weight Rating)** is the maximum permissible weight, including cargo, fluids, optional equipment and accessories that can be safely supported by each axle.

**UVW (Unloaded Vehicle Weight) \*** is the typical weight of the unit as manufactured at the factory. It includes all weight at the unit's axle(s), including full fuel, all fluids and LP Gas. The UVW does not include cargo, fresh potable water, additional optional equipment or dealer installed accessories.

\*Estimated Average based on standard build optional equipment.

**CCC (Cargo Carrying Capacity) \*\*** is the amount of weight available for fresh potable water, cargo, passengers, additional optional equipment and accessories. CCC is equal to GVWR minus UVW. Available CCC should accommodate fresh potable water (8.3 lbs per gallon). Before filling the fresh water tank, empty the black and gray tanks to provide for more cargo capacity.

\*\* Estimated average based on standard build optional equipment

Each Coachmen motorhome is weighed at the manufacturing facility prior to shipping. A label identifying the unloaded vehicle weight of the actual unit and the cargo carrying capacity is applied to every Coachmen motorhome prior to leaving our facilities.

The load capacity of your unit is designated by weight, not by volume, so you cannot necessarily use all available space when loading your unit.

Actual towing capacity is dependent upon your particular loading and towing circumstances, which includes the GVWR, GAWR and GCWR as well as adequate trailer brakes. Please refer to the Operator's Manual of your vehicle for further towing information.

All information contained in this brochure is believed to be accurate at the time of publication. However, during the model year, it may be necessary to make revisions and Coachmen reserves the right to make all such changes without notice, including prices, colors, materials, equipment and specifications as well as the addition of new models and the discontinuance of models shown in this brochure. Therefore, please consult with your Coachmen dealer and confirm the existence of any materials, design or specifications that are material to your purchase decision. 11/19

©Copyright 2019 Coachmen RV a Division of Forest River Inc. - All Rights Reserved.

### CUSTOMER SATISFACTION



[www.ForestRiverBuyLocal.com](http://www.ForestRiverBuyLocal.com)



**24/7 EMERGENCY  
ROADSIDE ASSISTANCE  
WITH VEHICLE PURCHASE\***

TOWING JUMP-STARTS TIRE CHANGES FLUID DELIVERY LOCKOUT SERVICE	WINCH-OUT MOBILE MECHANIC TECHNICAL SUPPORT DEALER LOCATOR SERVICES
---	--

**SAFERIDER  
RV CLUB**

\*VALID FOR 1 YEAR FROM DATE OF PURCHASE



**Learn More**  
Scan this barcode using  
a QR Reader on your  
smart phone to learn  
more about Forest River.



A Berkshire Hathaway company.



Coachmen RV, a Division of Forest River, Inc.,  
A Berkshire Hathaway Company

423 N. Main St., P.O. Box 30, Middlebury, IN 46540

To learn more about Coachmen RV and our products  
and see how Coachmen is making the easy life easier,  
visit [www.coachmenrv.com](http://www.coachmenrv.com)