

# Discover the Back Roads

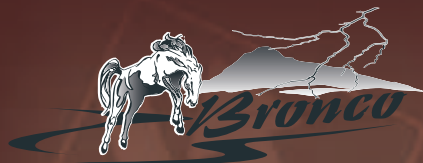
TRUCK CAMPERS



NORWAY	15 mi
PARIS	23 mi
DENMARK	23 mi
NAPLES	23 mi
SWEDEN	25 mi
POLAND	27 mi
MEXICO	37 mi
PERU	46 mi
CHINA	94 mi

**Palomino**  
Maverick • Bronco





# BRONCO

SOUTH DAKOTA

Bronco folding truck campers are built for the back roads. These lightweight truck-mounted campers are ideally suited for today's pick up trucks with a low profile that enhances fuel efficiency and easy handling on the road. A roomy interior is created with a pop-up roof that increases living space. With hard sidewalls on the lower portion of the unit and the upper portion made of sturdy vinyl tent fabric, the roof is easily raised and lowered with a smooth operating crank-up lifting system.



## Standard Equipment

Laminated Roof/Sidewalls  
Foam Insulation  
20 Lb. Bottle and Regulator  
City Water Hookup  
Outside Fresh Water Tank Fill\*  
One Piece Treated Floor  
Steel Floor Supports  
Front Truck Bed Bumpers  
Four Mechanical Corner Jacks  
Front Sliding Cab Windows  
Tinted White Radius Windows  
Hot Water System with Outside Shower\*  
Vinyl Coated Canvas  
Radius Roof  
Crank Lift System

Deluxe Innerspring Mattress  
Designer Bedspread  
Deluxe 4" Dinette Cushions  
Privacy Drape/Cabover Bed  
Pleated Fabric Window Shades  
Wheel Well Access Doors  
Armstrong Vinyl Floor Covering  
Porta Pottie Storage\*  
Tinted Upper Windows  
Roof Air Ready for Air Conditioner  
Dinette Bed  
Under Bed Storage  
35 Lb. Ice Box  
Three Burner Cook Top\*  
Demand Water System

Shower\*  
Toilet with Holding Tank\*  
Overhead Storage Cabinet  
14 x 14 Roof Vent  
12 Volt Interior Lights  
Power Converter w/Charger  
30 AMP Detachable Power Cord  
110 Volt Outside Receptacle/GFI  
12 Volt Patio Light  
Carbon Monoxide/LP Gas Detector  
Zippered Escape in Cabover  
Keyed Entry Lock  
Entry Assist Handle  
Fire Extinguisher  
Full Size Entrance Door

\*Standard on Select Models



Low Tide, Cape Cod, Massachusetts



### Standard Rear Door



Full Size Rear Entry Door  
(closed)

Full Size Rear Entry Door (open) -  
showing maximum entry height

## Optional Equipment

*Outside Shower (Hot Water Required)\**

## Happi Jac Tie Downs

## Create-A-Breeze Fan

13,500 BTU Air Conditioner

### *Dometic 2 Cu. 3-Way Refrigerator*

*Dometic 3 Cu. 3-Way Refrigerator\**

16,000 BTU Furnace

### AM/FM CD Player

### Dually Brackets\*

## Dodge Dakota Package

*\*Optional on Select Models*

BRONCO	600	800	1200	1250	1251	1450	1500
Total Exterior Length	11'0"	11'4"	12'10"	12'10"	13'4"	14'4"	14'4"
Total Exterior Width	6'5"	7'2"	7'2"	7'2"	7'2"	7'2"	7'2"
Floor Length	7'4"	6'9"	8'0"	8'0"	8'6"	9'6"	9'6"
Wheel Well Width	36"	48"	48"	48"	48"	48"	48"
Opt. Dakota Wheel Well	N/A	44"	44"	44"	N/A	N/A	N/A
Height Closed w/vent	4'11"	5'5"	5'5"	5'5"	5'5"	5'5"	5'5"
Interior Open Height	6'4"	6'4"	6'4"	6'4"	6'4"	6'4"	6'4"
Dry Weight (lbs.)	1004 lbs.	1126 lbs.	1265 lbs.	1325 lbs.	1463 lbs.	1553 lbs.	1577 lbs.
Center of Gravity	34-1/4"	32"	34-1/2"	41"	40-1/4"	47"	49-1/2"
Fresh Water Capacity	5 Gal.	16 Gal.	16 Gal.	16 Gal.	22 Gal.	22 Gal.	22 Gal.
Black Water Capacity	N/A	N/A	N/A	N/A	7 Gal.	6 Gal.	7 Gal.
LP Gas Capacity	20 lbs.	20 lbs.	20 lbs.	20 lbs.	20 lbs.	Two - 20 lbs.	Two - 20 lbs.
Cab Over Bed Size	46 x 72	60 x 80	60 x 80	60 x 80	60 x 80	60 x 80	60 x 80
Dinette Bed Size	20 x 69	36 x 62	36 x 72	36 x 72	36 x 62	36 x 72	36 x 72
Converter w/Charger	25 AMP	25 AMP	25 AMP	25 AMP	25 AMP	25 AMP	25 AMP



Historic Windmill, Jamestown,  
Rhode Island

*Inside the Bronco, you'll find an amazing amount of spacious comfort and convenient amenities. All models feature a fully equipped kitchen, comfortable sleeping quarters, privacy drape, ample storage, dinette, tinted windows, and much more. A full height entrance door with key entry lock and assist handle makes entry and exiting easy and convenient. All these great features make the Bronco series the perfect choice for back road adventures.*

**Maverick**  
Polaris



When the wanderlust beckons you on, the Maverick encourages you to follow. These hard side truck campers are designed for extended camping trips that take you to new adventures. It's a fully functional home-on-the-road equipped with all the comforts and amenities you need for pleasurable travel, plus an array of options to enhance your vacation time. The Maverick is available in three spacious floor plans including a slide-out model for even greater living space.



*Portland Head Light, Portland, Maine*

MAVERICK



MAVERICK	8801	1000SL	1000
Total Ext. Length	17'	18'	18'
Total Ext. Width	7'10"	7'10"	7'10"
Floor Length	9'	10'	10'
Wheel Well Width	48"	48"	48"
Ext. Height w/Ladder	8'2"	8'2"	8'2"
Interior Height	6'11"	6'11"	6'11"
Dry Weight	2320 lbs.	2643 lbs.	2453 lbs.
Center of Gravity	39"	43-1/2"	39-5/8"
Fresh Water Capacity	31 Gal.	31 Gal.	31 Gal.
Black Water Capacity	7 Gal.	7 Gal.	7 Gal.
Gray Water Capacity	8 Gal.	7 Gal.	7 Gal.
LP Gas Capacity	Two - 20 lbs.	Two - 20 lbs.	Two - 20 lbs.
Cab Over Bed Size	60 x 80	60 x 80	60 x 80
Dinette Bed Size	40 x 73	40 x 62	40 x 73
Converter w/Charger	45 AMP	45 AMP	45 AMP



## Standard Equipment

Fully Decked Laminated/Insulated Roof  
EPDM Rubber Roof  
Laminated Smooth Fiberglass Exterior  
Foam Insulated Walls/Floor  
Laminated Knee Walls  
Laminated Underbelly  
Steel Floor Supports  
Front Truck Bed Bumpers  
2,000 Lb. Manual Ball Screw Jacks (4)  
Front Sliding Cab Window  
White Radius Safety Glass Windows  
Double 20 Lb. LP Bottles and Regulator  
City Water Hookup  
Sewer Hose Adapter  
Sewer Hose Storage Compartment  
Outside Fresh Water Tank Fill  
Pillow Top Queen Size Innerspring Mattress  
Privacy Drape/Cabover  
Designer Bedspread  
Designer Pillow Shams  
Pleated Fabric Window Shades  
Framed Cabinet Doors and Drawer Fronts  
Positive Catch Hardware  
Wheel Well Access Doors

## Standard Equipment (cont.)

Vented Battery Box  
TV Cable Ready  
Extended Cabover with Queen Bed  
AM/FM CD Player with Cassette  
Amplified TV Antenna  
Armstrong Vinyl Floor Covering  
Dometic 5 Cu. Ft. Refrigerator  
16,000 BTU Furnace w/Auto Ignition  
Three Burner Range with Oven  
6 Gallon Water Heater - Gas and Electric  
Demand Water Pump  
Power Range Hood w/Light and Fan  
Range Cover  
Thetford Toilet  
Shower  
12 Volt Power Vent in Bath  
Medicine Cabinet with Mirror  
Water Heater By-Pass Kit  
Pre-wired for Optional Microwave  
Pre-wired for Optional Air Conditioner  
Pre-wired for Optional Electric Jacks  
12 Volt Interior Lights  
110 Volt Outside Receptacle  
30 AMP Detachable Power Cord  
System Monitor Panel  
30 AMP Converter with Charger  
GFI Protected Receptacles  
Smoke Detector  
Carbon Monoxide and LP Gas Detectors  
Egress Vent/Cabover  
Entry Assist Handle  
Fire Extinguisher  
Backup and Tail Lights  
Lower Door Window  
Ladder  
Outside Shower



## Optional Equipment

Short Bed Package\*  
Entry Step (Scissor)  
Happi Jac Tie Downs  
Electric Jacks (4)  
Dually Brackets  
13,500 BTU Air Conditioner  
Overhead Cabinet Bunk  
Folding Sofa Bed\*  
Create-A-Breeze Fan  
Microwave Oven  
Rear Awning  
Side Awning\*  
Dually Brackets  
AM/FM CD Player w/DVD  
Stainless Steel Package

\*Optional on Select Models



*Waterfall in Rickett's Glen State Park, Central Pennsylvania*

The Maverick is attractively furnished with a complete kitchen, private bathroom with shower, and comfortable queen size bed, plus ample storage. Select models even include a folding sofa bed for extra sleeping space. The Maverick is constructed sturdy with a laminated smooth fiberglass exterior that looks as good as it's built. Laminated knee walls, underbelly and fully decked insulated roof along with foam insulated walls and steel supported floor ensure quality and long-lasting value.

# FLOOR PLANS

## Maverick



Bronco Fabric

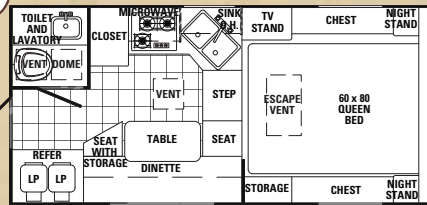


Maverick Fabric

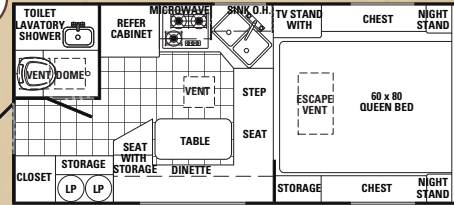


Pier, Halifax, Nova Scotia

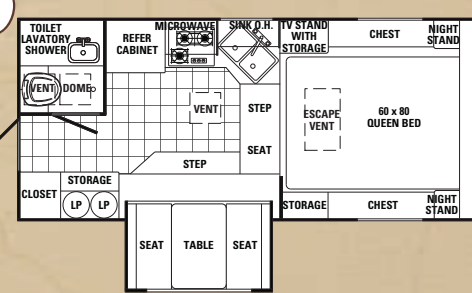
8801



1000

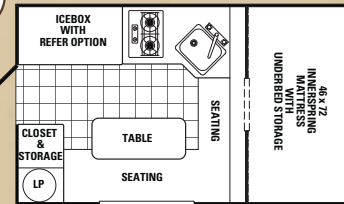


1000 SL

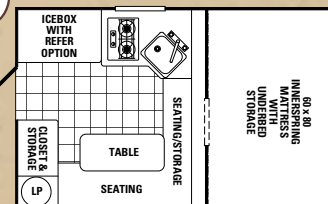


## Bronco

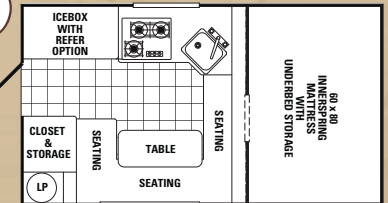
600



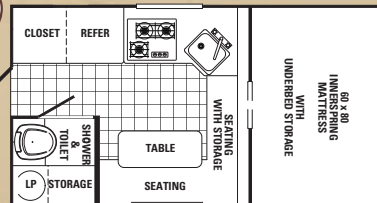
800



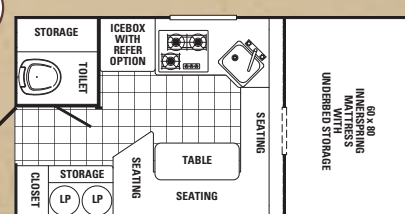
1200 1250



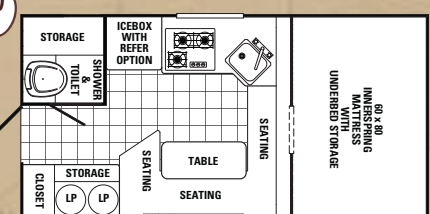
1251



1450



1500



# FEATURES & OPTIONS



Front rubber bumpers protect the front of the truck bed.



Optional 13,500 BTU air conditioner will keep you cool on hot days



Optional electric jacks (2,000 lbs.) make set-up quick and easy



Push button slide-out control



In-line water filter ensures your safety



*Lighthouse, Stonington Harbor, Connecticut*



Digital AM/FM CD player w/cassette and w/optional DVD player



Optional 10 bladed, 3 speed Create-A-Breeze™ Fantastic Vent keeps fresh air circulating



Four 2,000 lbs. manual ball screw jacks allow for easy leveling



Sturdy ladder offers easy roof access



The standard outside shower keeps any mess outside



17,000 BTU furnace takes the chill off cold nights



Happi Jac camper anchor and turnbuckle



Large size appliances enhance the function and efficiency of the kitchen (Available Stainless Steel Package)

*Palomino truck campers are loaded with special features designed for your comfort and convenience. In addition to the abundance of standard items, numerous options are also available that enable you to customize your unit to fit your needs and lifestyle. The Palomino difference is found in the many details that enhance the value of your investment and the pleasure of your travels.*



## Built For The Back Roads

Palomino truck campers are built for the road with top grade building materials and proven construction techniques along with an attractive smooth fiberglass exterior.

Front Cover Photo Locations:  
Colchester Covered Bridge, Downsville,  
New York and Town Directional Sign,  
Lynchville, Maine



*Stone House, White Mountains,  
New Hampshire*

Vanguard LLC can not know the GVWR or features of your truck nor the purpose you have in mind for the use of your Truck Camper. Therefore, Vanguard LLC makes no warranties or representation; expressed or implied, as to the performance or reliability of your truck with a Palomino Truck Camper.



**Vanguard LLC**

31450 M-86 West • Colon, MI 49040  
Phone: (269) 432-3271 • Fax: (269) 432-2516  
[www.palominorv.com](http://www.palominorv.com)

All illustrations and specifications contained in this literature are based on the latest product information at time of publication. All weights shown are estimates. Vanguard LLC reserves the right to make changes in prices, colors, materials, equipment and specifications at anytime without notice and assumes no responsibility for any error in this literature. All units are shipped F.O.B. Colon, Michigan. CONSULT YOUR LOCAL DEALER FOR WARRANTY INFORMATION.

DEALER