

cahaba

MERCEDES-BENZ 2500 SPRINTER CARGO VAN 4X2

CHASSIS FEATURES

- 3.0L 6-cylinder Turbo Diesel Engine
- Horsepower @ RPM: 188 HP @ 3,800 RPM
- Torque: lb-ft @ RPM: 325 lb-ft @ 1,400-2,400 RPM
- Automatic Transmission, 7G-Tronic
- 2-Wheel Drive
- LT245/70 R17 BF Goodrich All-Terrain T/A KO2 Tires (+Spare)
- Vision Off-Road Wheels
- 4-wheel ABS Brakes
- Alternator Amps: 220
- 12 V 70 AH AGM Chassis Battery

AVAILABLE OPTIONS

- 4-Wheel Drive

SAFETY FEATURES

- Attention Assist*
- Active Distance Assist Distronic*
- Load-Adaptive Electronic Stability Program (ESP)*
- Active Brake Assist
- Blind Spot Assist
- Traffic Sign Assist
- Crosswind Assist
- Active Lane Keeping Assist
- Hill Start Assist
- Parking Package with 360° Camera
- High Beam Assist
- Driver and Passenger Airbags
- Tire Pressure Monitoring

DRIVER'S COMPARTMENT FEATURES

- MBUX Multimedia System with 10.25" Touchscreen
- Intelligent Navigation
- Smartphone Integration For Apple Carplay* and Android™ Auto
- Tray for Smartphones with Charging Ports
- Instrument Cluster with Color Display
- Leather Wrapped Steering Wheel with Integrated Controls
- Interior Rear View Mirror
- Emergency Call System
- Wireless Internet Access
- Keyless Start
- Power Cab Door Locks and Windows
- Black Leather, Heated, Power Adjustable Driver and Passenger Seats- Both with Swivel Base
- Rain Sensor for Windshield Wipers
- Manual Parking Brake
- Door Mounted Driver and Passenger Assist Handles

WEIGHTS & MEASURES

- Overall Length (approximate): 19' 5"
- Overall Height (maximum): 9' 10"
- Overall Width: 95.5"
- Interior Height: 75"
- Interior Width: 69"
- Fuel Tank (gallons): 24.5
- DEF Tank (gallons): 4.8
- Fresh Water (gallons): 28
- Black/Grey Tank (gallons): 27
- GVWR: 9,050 lb
- GCWR: 13,930 lb
- Hitch Rating: 5,000 lb Towing Capacity

PLUMBING & ELECTRICAL FEATURES

- Spyder Multiplex Control System
- Timberline Hydronic Heating System
- Unitized Sewer Management System
- 30-Amp Smart-plug Power Cord
- 13.5 K BTU Air Conditioner with Soft Start and Bluetooth Capability
- (3) 100 W Solar Panels
- Roof Port Wiring Access

VOLTA POWER SYSTEM

- Usable Energy: 12,100 WH
- Inverter: 3200 W (26.6A @ 120 V)
- Dedicated 2nd Alternator: 6,900 W
- Centralized Volta System Monitor and Energy Management System

EXTERIOR

- Luggage Rack
- Side-mounted Ladder
- Running Board w/ 12 V Lighting
- Power Patio Awning with LED Lighting & Bluetooth Controls
- Rear-door Mounted Tire Carrier with Full Size Tire

AVAILABLE OPTIONS

- Exterior LED Light Package (includes LED Front Light Bar and Rear Spot Light)
- Rear-door Mounted MOLLE Gear Rack with attached Bike Rack
- Screen Door Package (includes Screens for Rear Doors and Passenger Side Sliding Door)

INTERIOR

- Centralized Location for Spyder, Volta, and Timberline Control Panels
- LED Lighting
- Tinted Windows
- Privacy Shades
- USB Charging Ports
- Handcrafted Laminated Cabinetry

KITCHEN

- Solid Surface Countertop
- Portable Single Burner Induction with Flush Counter Inset
- 2.3 cu. ft 12 V Stainless Steel Refrigerator with Freezer
- Stainless Steel Single Bowl Sink
- Stainless Steel Microwave

REAR LIVING AREA/BEDROOM

- Opposing Benches that Convert to a Large Bed
- Cargo Tie-down Anchors for Gear Storage
- Pop-up 110 V Outlet

AVAILABLE OPTIONS

- Tri-fold Sofa Bed

WET-BATH

- 24" x 36" Shower Surround with Toilet Platform
- Retractable Shower Screen
- AquaView Showermiser
- Removable Shelf
- Dry-roll Toilet Paper Dispenser

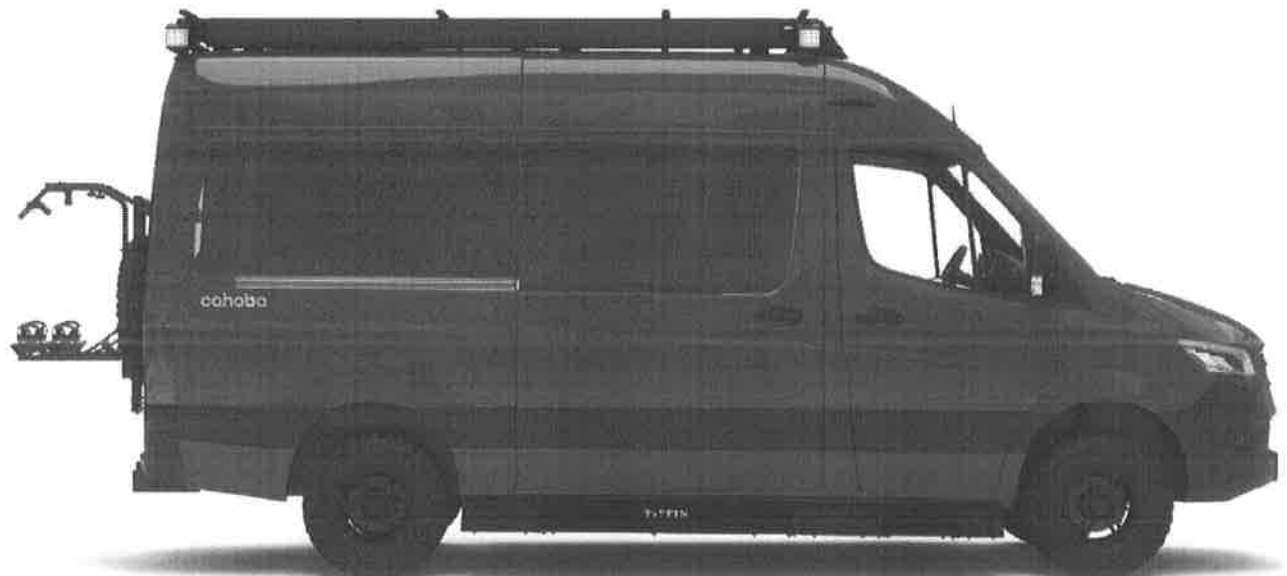


The design of the Cahaba floor plan must meet four essential criteria: Maximum space, Optimal organization, Relaxation plus, and Elegant atmosphere. Tiffin's MORE Plans offer your family the most comfortable layout for life on the road.



All options may not be available on every model. Because of progressive improvements and specifications, standard and optional equipment are subject to change without notice or obligation. For a complete and up-to-date list of available options and specifications, visit tiffinmotorhomes.com.

For all information concerning the limited warranty provided by Tiffin, please refer to the full, written limited warranty set forth on the Tiffin website or held by our authorized dealerships.

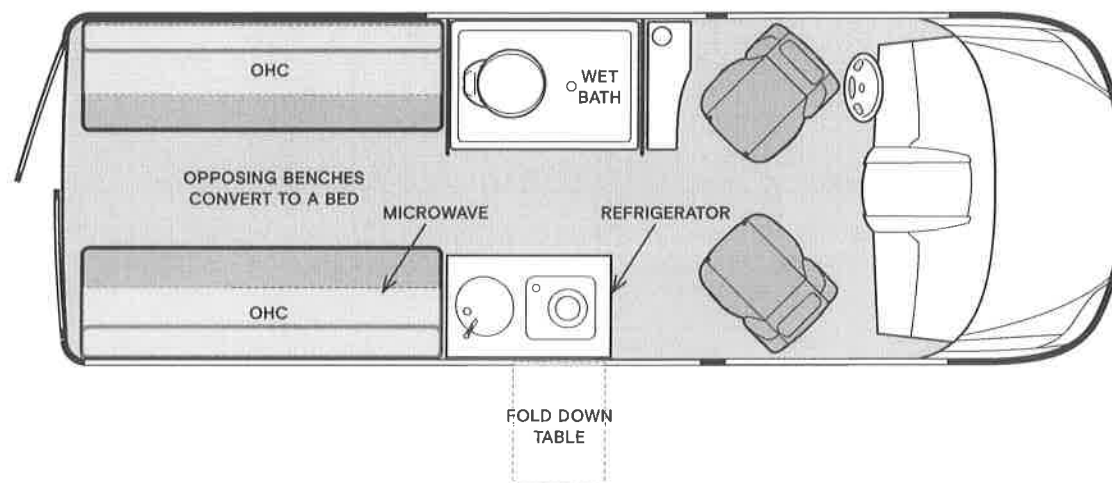


Early Concept- Subject to Change

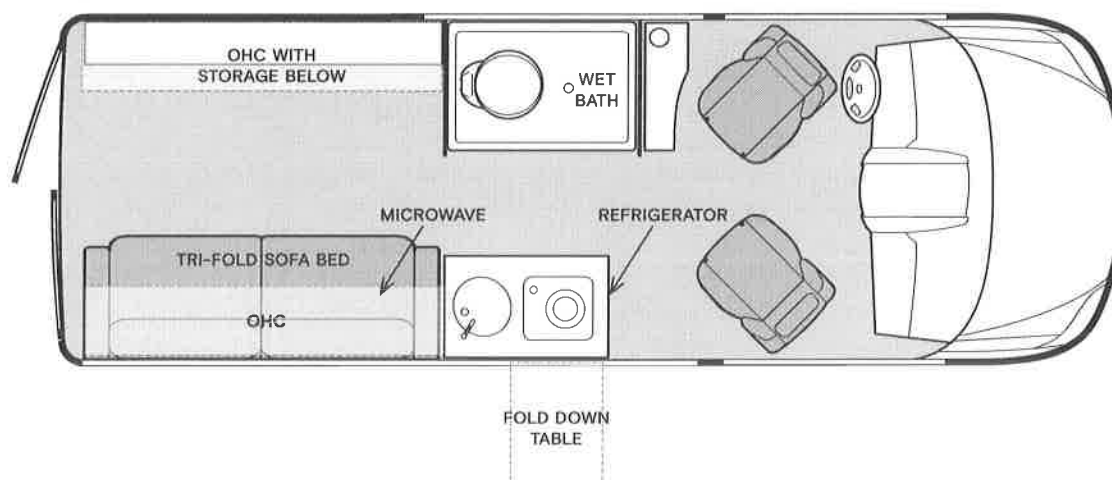
cahaba

19 SC

Standard Furniture



Optional Furniture



At this time the Cahaba is still under development. Specifications and floor plans are subject to change.



TIFFIN
MOTORHOMES

FOR PARTS & SERVICE CALL 205.487.4710 OR VISIT TIFFINMOTORHOMES.COM | 625 FAWN GROVE ROAD WINFIELD, AL 35594 f i p

©2021 Tiffin Motorhomes, Inc. Allegro®, Allegro Breeze®, Allegro RED®, Phaeton®, Allegro Bus®, Zephyr®, Wayfarer®, Roughing It Smoothly®, Open Road®, PowerGlide®, Pusher® and Cahaba® are registered trademarks of Tiffin Motorhomes, Inc. All rights reserved. For all information concerning the limited warranty provided by Tiffin, please refer to the full written limited warranty set forth on the Tiffin website or held by our authorized dealerships. Please note, some interior furnishings not included.