



# Odyssey



Serial #: 1JSLECBN2P1ER8057  
 Model: 25R ODYSSEY MHC  
 VIN#: 1FDXE4FN0PDD05068  
 Model Year: 2023 Dealer Name: MOTOR HOME SPECIALIST  
 5411 SOUTH I-35 WEST  
 ALVARADO, TX 76009  
 USA

**Manufacturer's Suggested Retail Price \$165,461.00**

TOTAL AMOUNT DOES NOT INCLUDE STATE AND LOCAL TAXES OR LICENSE FEES. THE PRICE SHOWN ABOVE MAY OR MAY NOT BE REPRESENTATIVE OF THE ACTUAL SELLING PRICE OF SIMILAR RECREATIONAL VEHICLES IN YOUR AREA.

## Standard Equipment

THE FOLLOWING ITEMS ARE STANDARD ON THIS MODEL AT NO EXTRA CHARGE

### STANDARD EXTERIOR EQUIPMENT

- Ford® E-450 chassis
- GVWR - 14,500 lb.
- GCWR - 22,000 lb.
- 7.3L V-8 350 HP engine with 468 ft.-lb. torque
- 6-speed TorqShift® series transmission with overdrive
- 210 amp alternator
- E-rated highway tires- LT225/75R16
- Power anti-lock brakes with power steering
- 7,500 lb. hitch with 750 lb. tongue capacity and 7-pin plug
- 12V chassis battery
- 55 gal. fuel tank
- 4,000W generator
- Transfer switch with reverse polarity protection
- 30 amp electrical service
- 12V house battery
- 1,000W inverter
- Solar prep
- 15,000 BTU ducted A/C
- 30,000 BTU auto-ignition furnace
- Electric fireplace (26M, 30Z)
- 6 gal. gas/electric DSI auto-ignition water heater
- 12.2 gal. propane tank (41 lb.)
- LP quick-connect hookup
- Exterior utility center
- Winterization drain system
- Outside shower
- 12V demand water pump
- Water filtration system
- TuffShell™ vacuum-bond laminated roof, floor and sidewalls
- Bead-foam insulation (R-24 max roof, R-9 max floor, R-5 max walls)
- One-piece, seamless, fiberglass roof
- Aluminum running boards
- Fiberglass exterior walls with vinyl graphics
- Leveling jack prep
- Remote-controlled, side-view mirrors
- Entrance door with industry's largest travel-view window
- Electric-powered entrance step with integrated house battery compartment
- Slideout cover awnings
- Pass-through storage compartment with light (select models)
- Exterior LED HD Smart TV with (2) high-output, marine-grade exterior speakers
- 4 in. bumper tube sewer hose storage
- Roof ladder (N/A 30Z)
- Third brake light

### STANDARD INTERIOR EQUIPMENT

- Remote keyless cab entry
- Swivel driver and passenger seats with boosters (N/A 25R)
- Tire pressure monitoring system (TPMS)
- Power windows and door locks
- A/C and cruise control
- Tilt steering wheel
- Auxiliary start switch
- Privacy curtains for cab area
- Custom-molded ABS surround in cab-over area
- 84 in. ceiling height
- High-intensity recessed LED lights
- LED-lit slideout fascia
- Ball-bearing drawer guides
- Pleated blackout shades
- Interior command center
- Entegra-exclusive, easy-operation legless dinette table
- Interior entrance door grab handle
- Prep for satellite dish
- Cable TV hookup with RG-6 coax
- Winegard 2.0 Wi-Fi/4G antenna
- Furrion® all-in-one cooktop and oven
- Residential-size microwave
- LED-lit kitchen countertops
- Recessed stainless steel kitchen sink with cutting board sink cover
- Decorative kitchen backsplash
- Pop-up charging station with 110 outlet and USB plugs
- Shower with decorative surround, glass door, skylight and light
- Recessed stainless steel bathroom sink
- Porcelain toilet with foot flush
- Powered roof vent in bathroom with wall switch
- Queen-size bed with bedspread (king size in 27U only)
- USB port and wireless charging in nightstands (27U, 29V, 30Z, 31F)
- USB port in cabinet over bed (24B, 25R, 26M)
- Under-bed storage (select models)
- Bedroom TV prep
- Large wardrobes
- Overhead bunk with 750 lb. capacity and safety net
- Bunks with industry-exclusive, 300 lb. capacity each (31F)
- Wall-mounted tablet holder in each bunk (31F)
- 2-point lap safety belts in all designated seating locations
- Driver and passenger airbags
- Smoke alarm
- Carbon monoxide detector

### CUSTOMER VALUE PACKAGE

- E-Z DRIVE™: Computer-balanced driveshaft, standard front and rear stabilizer bars, Hellwig® helper springs, rubber isolation body mounts
- One-piece, seamless fiberglass front cap
- Automotive-bonded panoramic window in front cap with power shade
- Frameless windows
- Heated holding tanks (12V pads)
- Electric patio awning with LED lights
- Black tank flush
- Sony® infotainment center with Apple CarPlay® and Android Auto™
- Backup and side-view cameras
- 8 cu.ft. gas/electric refrigerator
- LED HD Smart TV in living area

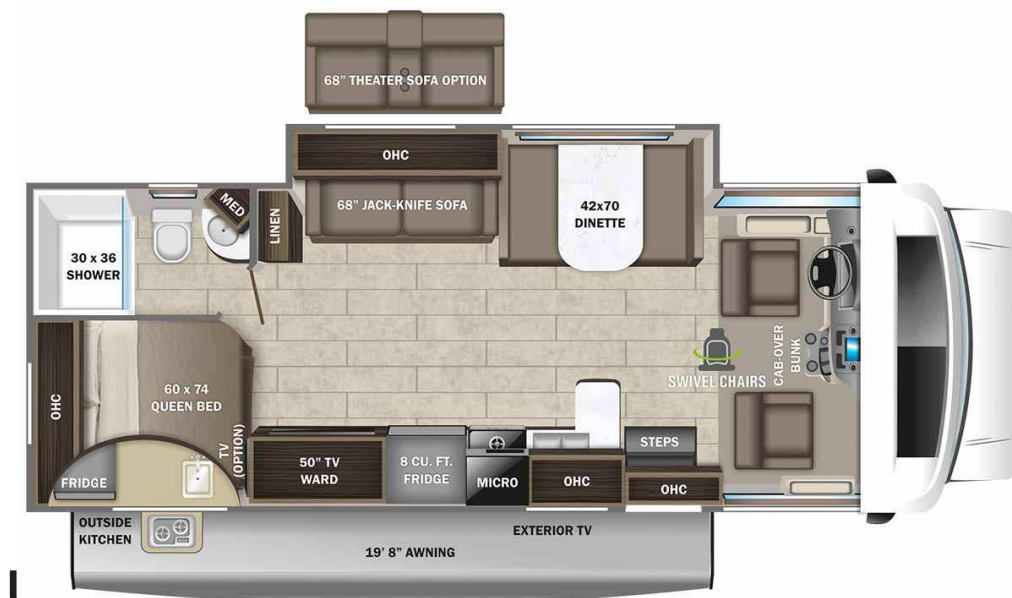
## Optional Equipment

OPTIONAL EQUIPMENT INSTALLED ON THIS VEHICLE BY MANUFACTURER

|  |            |
|--|------------|
| Base price   | 149,318.00 |
| Carbon   | n/c        |
| Graphite Partial Paint Package                     | 3,743.00   |
| USA Standards                                      | n/c        |
| 23 FD E45 14500 158"                               | n/c        |
| 7.3L WHITE PC10                                    | n/c        |
| Customer Value Package                             | 6,000.00   |
| Bedroom TV   | 383.00     |
| Hydraulic Auto Leveling Jacks                      | 3,893.00   |
| 190W Roof Mounted Solar Panel w/ 2nd House Battery | 893.00     |
| Standard House Battery                             | n/c        |
| Sun Folding Windshield Shade                       | 488.00     |
| Theater Seating Sofa                               | 743.00     |

UNIT TOTAL **165,461.00**

DEALER INSTALLED OPTIONS



### DIMENSIONS

Exterior height:.....140.00"  
 Exterior width:.....100.00"

### CAPACITIES

Fresh water tank (gals.):...38.00  
 Gray water tank (gals.):...41.00  
 Black water/toilet tank (gals.):.....32.00  
 Propane (lbs.):.....41  
 Propane (gals.):.....9  
 Water heater (gals.):.....6.00

### TIRES

Tire size (front):.....LT225/75R16E  
 Tire size (mid):.....  
 Tire size (rear):.....LT225/75R16E

\*\*\*Some dimensions may be rounded and may vary from the actual dimensions\*\*\*  
 \*\*\*Weights may be estimated calculations and may vary from the actual weight - refer to the vehicle weight labels for actual weights\*\*\*  
 Floorplans, features and specifications are subject to change without notice.