



**ENTEGR A**  
COACH®

# Vision XL



Serial #: 1JSMEABT1N1UB8051  
 Model: 34B VISION XL MHA  
 VIN#: 1F66F5DN3M0A11188  
 Model Year: 2022 Dealer Name: MOTOR HOME SPECIALIST  
 5411 SOUTH I-35 WEST  
 ALVARADO, TX 76009  
 USA

**Manufacturer's Suggested Retail Price \$188,822.00**

TOTAL AMOUNT DOES NOT INCLUDE STATE AND LOCAL TAXES OR LICENSE FEES. THE PRICE SHOWN ABOVE MAY OR MAY NOT BE REPRESENTATIVE OF THE ACTUAL SELLING PRICE OF SIMILAR RECREATIONAL VEHICLES IN YOUR AREA.

## Standard Equipment

THE FOLLOWING ITEMS ARE STANDARD ON THIS MODEL AT NO EXTRA CHARGE

- EXTERIOR**
- Ford® F53 chassis
  - GVWR - 22,000-lb. (34B, 34G) 24,000-lb. (36A, 36C)
  - GCWR - 26,000-lb. (34B, 34G), 30,000-lb. (36A, 36C)
  - 7.3L V-8 350 HP engine with 468 ft.-lb. torque
  - 6-speed automatic TorqShift® transmission with overdrive and tow haul mode
  - 210-amp alternator
  - G-rated highway tires - 235/80R22.5 (34B, 34G), 255/80R22.5 (36A, 36C)
  - Front and rear disc, 4-wheel anti-lock brakes
  - 5,000-lb. rear hitch receiver with dual connector and 7-pin plug
  - 12V chassis battery
  - 80-gal. fuel tank
  - Transfer switch with reverse polarity protection
  - (2) 6V AGM (220Ah) house batteries on slideout tray
  - 190W solar panel with dual controller
  - Heated holding tanks (12V pads)
  - Auto-ignition ducted furnace-35,000 BTU (34B, 34G, 36C), (2) 30,000 BTU (36A)
  - Furrion® electric fireplace (34B, 34G, 36C)
  - 16.5-gal. propane tank (56-lb.)
  - LP quick-connect hookup
  - Exterior utility center
  - Winterization drain system
  - Black tank flush
  - Outside shower
  - 12V demand water pump
  - Water filtration system
  - TuffShell™ vacuum-bond laminated roof, floor and sidewalls
  - Bead-foam insulation (R-24 max roof, R-9 max floor, R-5 max walls)
  - One-piece, seamless, fiberglass front and rear caps
  - One-piece, seamless, crowned fiberglass roof
  - Fiberglass exterior walls with vinyl graphics
  - Entrance door with industry's largest travel-view window
  - Electric-powered entrance step
  - Lockable pass-through storage compartments with slam latches
  - Third brake light
  - Porch light

- INTERIOR**
- Power front privacy shade with manual side privacy shades
  - 120-in. panoramic windshield
  - Swivel driver and passenger seats
  - Soft-touch, vinyl-wrapped automotive dash
  - A/C and cruise control
  - Tilt steering wheel
  - Auxiliary start
  - Firefly Multiplex system
  - 84-in. interior ceiling height with padded vinyl ceiling
  - High-intensity recessed LED ceiling lights
  - LED-lit hardwood fascia
  - Hardwood cabinet doors and drawers
  - Ball-bearing drawer guides
  - Entegra-exclusive, easy-operation legless dinette table
  - Prep for satellite dish
  - Cable TV hookup with RG-6 coax
  - Winegard 2.0 Wifi/4G antenna
  - 21-cu.ft. residential refrigerator with ice and water in door
  - Furrion® all-in-one cooktop and oven
  - Residential-size microwave
  - Decorative kitchen backsplash
  - Shower with decorative surround, glass door, skylight and light
  - Recessed stainless steel bathroom sink
  - Porcelain toilet with foot flush
  - Walk-around King-size bed with bedspread and nightstands
  - Under-bed storage (select models)
  - LED TV in bedroom
  - Large wardrobes
  - Bunks with industry-exclusive, 300-lb. capacity each (36A)
  - 2-point lap safety belts in all designated seating locations
  - Smoke alarm
  - Carbon monoxide detector

- CUSTOMER VALUE PACKAGE**
- E-Z DRIVE™ ELITE: Computer-balanced driveshaft, variable-rate jounce bumpers, heavy-duty front and rear stabilizer bars, SACHS shocks, 22.5" Michelin® tires
  - Automatic hydraulic leveling jacks
  - Frameless windows
  - 15,000-BTU A/C unit with heat pump and second 13,500-BTU A/C unit
  - Exterior entertainment center with outside speakers, LED TV mounted on swivel bracket and single-disc DVD/FM radio
  - Electric patio awning with LED lights
  - Slideout cover awnings
  - Onan® Marquis Gold Genset 5,500-watt generator with auto-gen start
  - 1,200-watt inverter
  - 50-amp electrical service
  - Girard tankless water heater
  - Sony® infotainment center with Apple CarPlay® and Android Auto™
  - Backup and side-view cameras
  - Removable driver/passenger cockpit table
  - LED-lit, solid-surface kitchen countertops with recessed stainless steel sink and sink covers
  - LED HD Smart Fire TV in living area
  - Day/night roller shades in living area

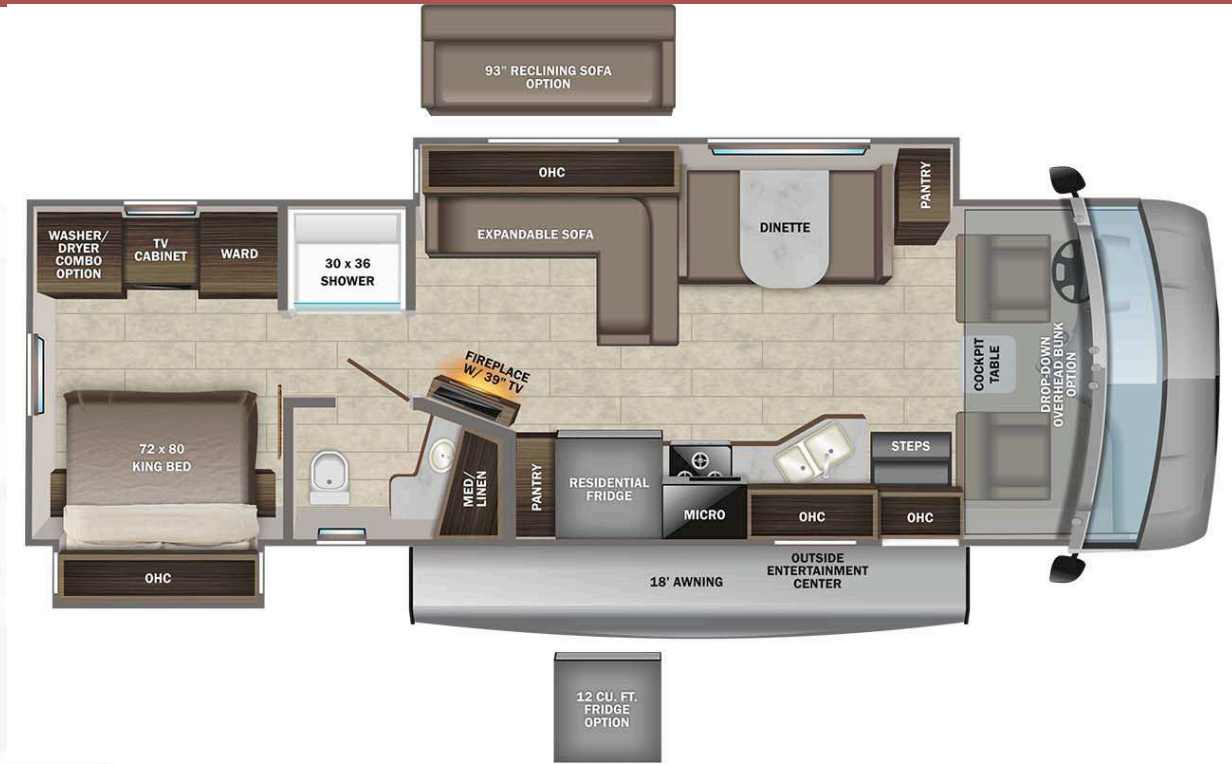
## Optional Equipment

OPTIONAL EQUIPMENT INSTALLED ON THIS VEHICLE BY MANUFACTURER

Base price	171,743.00
Modern Farmhouse	443.00
Ocean Spray Graphics	n/c
USA Standards	n/c
Customer Value Package	11,250.00
Residential Refrigerator	n/c
Washer/Dryer Combo	1,800.00
Reclining Sofa Straight 93"	593.00
Front Overhead Bunk	2,993.00

UNIT TOTAL **188,822.00**

DEALER INSTALLED OPTIONS



### DIMENSIONS

Exterior height:.....154.00"  
 Exterior width:.....101.00"

### CAPACITIES

Fresh water tank (gals.):...72.00  
 Gray water tank (gals.):...40.00  
 Black water/toilet tank (gals):.....40.00  
 Propane (lbs.):.....56  
 Propane (gals.):.....13  
 Water heater (gals.):.....0.00

### TIRES

Tire size (front):.....235/80R22.5G  
 Tire size (mid):.....  
 Tire size (rear):.....235/80R22.5G

\*\*\*Some dimensions may be rounded and may vary from the actual dimensions\*\*\*

\*\*\*Weights may be estimated calculations and may vary from the actual weight

- refer to the vehicle weight labels for actual weights\*\*\*

Floorplans, features and specifications are subject to change without notice.