



ENTEGR A
COACH®

Vision



Serial #: 1JSMEABP9N1AS8065
 Model: 29S VISION MHA
 VIN#: 1F65F5DN8M0A09481
 Model Year: 2022 Dealer Name: MOTOR HOME SPECIALIST
 5411 SOUTH I-35 WEST
 ALVARADO, TX 76009
 USA

Manufacturer's Suggested Retail Price \$161,935.00

TOTAL AMOUNT DOES NOT INCLUDE STATE AND LOCAL TAXES OR LICENSE FEES. THE PRICE SHOWN ABOVE MAY OR MAY NOT BE REPRESENTATIVE OF THE ACTUAL SELLING PRICE OF SIMILAR RECREATIONAL VEHICLES IN YOUR AREA.

Standard Equipment

THE FOLLOWING ITEMS ARE STANDARD ON THIS MODEL AT NO EXTRA CHARGE

- EXTERIOR**
- Ford® F53 chassis
 - GVWR - 16,000-lb. (26X), 18,000-lb. (27A, 29F, 29S, 31V)
 - GCWR - 23,000-lb.
 - 7.3L V-8 350 HP engine with 468 ft.-lb. torque
 - 6-speed automatic TorqShift® transmission with overdrive and tow haul mode
 - 210-amp alternator
 - G-rated highway tires-245/70R19.5
 - Front and rear disc, 4-wheel anti-lock brakes
 - 5,000-lb. rear hitch receiver with dual connector and 7-pin plug
 - 12V chassis battery
 - 80-gal. fuel tank
 - Onan Marquis Gold Genset 5,500-watt generator (4,000 watt on 26X)
 - Transfer switch with reverse polarity protection
 - 50-amp electrical service (30 amp on 26X)
 - 12V house battery
 - 190W solar panel with dual controller
 - Heated holding tanks (12V pads)
 - 15,000-BTU A/C unit with heat pump and second 13,500-BTU A/C unit (15,000-BTU A/C unit on 26X)
 - Auto-ignition ducted furnace - 30,000 BTU
 - Girard® tankless water heater
 - 16.5-gal. propane tank (56-lb.)
 - LP quick-connect hookup
 - Exterior utility center
 - Winterization drain system
 - Black tank flush
 - Outside shower
 - 12V demand water pump
 - Water filtration system
 - TuffShell™ vacuum-bond laminated roof, floor and sidewalls
 - Bead-foam insulation (R-24 max roof, R-9 max floor, R-5 max walls)
 - One-piece, seamless, fiberglass front cap with partial paint
 - Fiberglass exterior walls with vinyl graphics
 - Automatic hydraulic leveling jacks
 - Frameless windows
 - Entrance door with industry's largest travel-view window
 - Electric-powered entrance step
 - Lockable pass-through storage compartments with slam latches
 - 4-in. tube bumper with sewer hose storage
 - Roof ladder
 - Third brake light
 - Porch light

- INTERIOR**
- Power front privacy shade with manual side privacy shades
 - 120-in. panoramic windshield
 - Swivel driver and passenger seats
 - Soft-touch, vinyl-wrapped automotive dash
 - A/C and cruise control
 - Tilt steering wheel
 - Auxiliary start
 - 84-in. interior ceiling height
 - High-intensity recessed LED ceiling lights
 - LED-lit hardwood fascia
 - Hardwood cabinet doors and drawers
 - Ball-bearing drawer guides
 - Entegra-exclusive, easy-operation legless dinette table
 - Prep for satellite dish
 - Cable TV hookup with RG-6 coax
 - Winegard 2.0 Wifi/4G antenna
 - 8-cu.ft gas/electric refrigerator
 - Furrion® all-in-one cooktop and oven
 - Residential-size microwave
 - Large, recessed, stainless steel kitchen sink with cover
 - LED-lit pressed countertops
 - Flip-up countertop extension (select models)
 - Decorative kitchen backsplash
 - Pop-up charging station in kitchen with 110 outlets and USB ports
 - Shower with decorative surround, glass door, skylight and light
 - Recessed stainless steel bathroom sink
 - Porcelain toilet with foot flush
 - Powered roof vent in bathroom with wall switch
 - Walk-around, Queen-size bed with bedspread and nightstands (King size in 27A)
 - Under-bed storage (select models)
 - Powered roof vent in bedroom with wall switch
 - Bedroom TV prep
 - Large wardrobes
 - Bunks with industry-exclusive 300-lb. capacity each (29F)
 - 2-point lap safety belts in all designated seating locations
 - Smoke alarm
 - Carbon monoxide detector

- CUSTOMER VALUE PACKAGE**
- E-Z DRIVE™: Computer-balanced driveshaft, jounce bumpers, heavy-duty front and rear stabilizer bars, SACHS shocks
 - One-piece, seamless, crowned fiberglass roof
 - Exterior entertainment center with outside speakers, LED TV mounted on swivel bracket and single-disc DVD/FM radio
 - Electric patio awning with LED lights
 - Slideout cover awnings
 - 1,000-watt inverter
 - Sony® infotainment center with Apple CarPlay® and Android Auto™
 - Backup and side-view cameras
 - Removable driver/passenger cockpit table
 - LED HD Smart Fire TV in living area
 - Blackout night roller shades

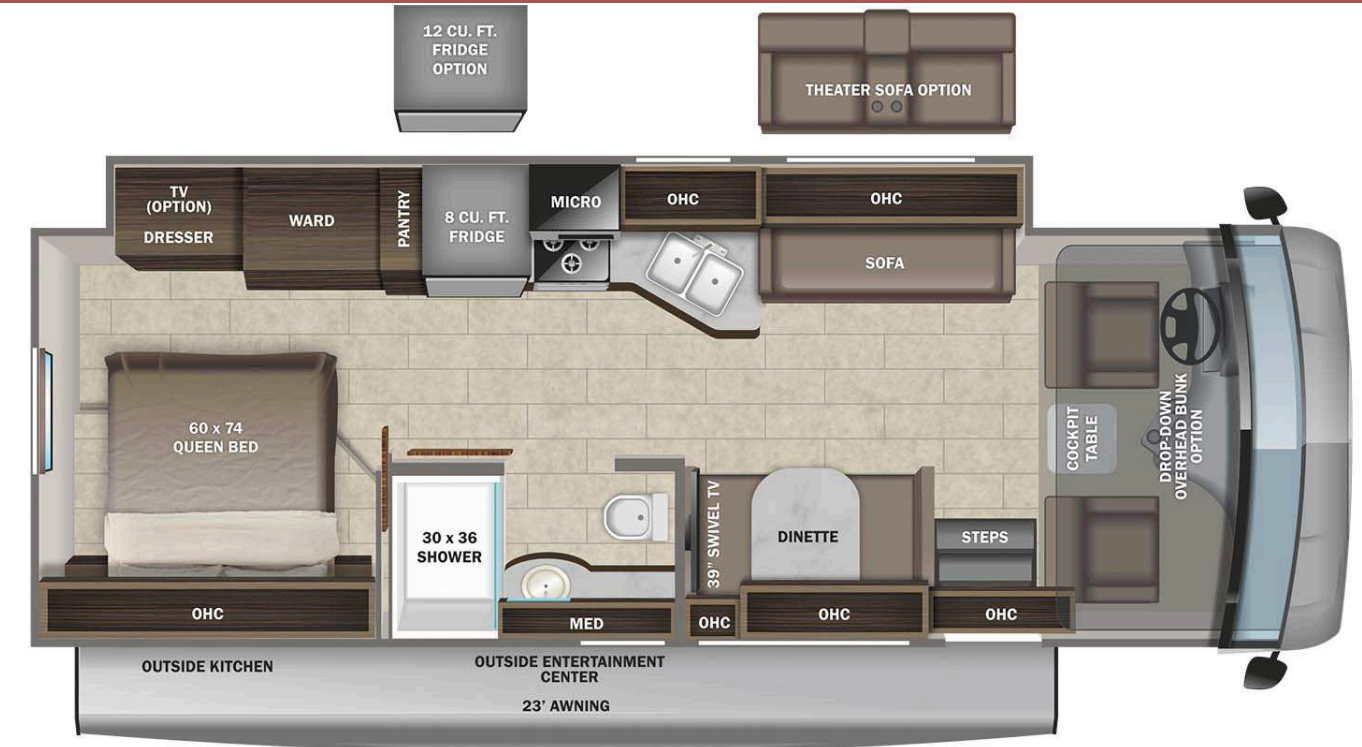
Optional Equipment

OPTIONAL EQUIPMENT INSTALLED ON THIS VEHICLE BY MANUFACTURER

Base price	148,418.00
Modern Farmhouse	443.00
Ocean Spray Graphics	n/c
USA Standards	n/c
Customer Value Package	9,923.00
Bedroom TV	383.00
8 Cu. Ft. Refrigerator	n/c
Theater Seating Sofa	525.00
Front Bunk Overhead	2,243.00

UNIT TOTAL **161,935.00**

DEALER INSTALLED OPTIONS



DIMENSIONS

Exterior height:.....149.00"
 Exterior width:.....101.00"

CAPACITIES

Fresh water tank (gals.):...72.00
 Gray water tank (gals.):...49.00
 Black water/toilet tank (gals.):.....50.00
 Propane (lbs.):.....56
 Propane (gals.):.....13
 Water heater (gals.):.....0.00

TIRES

Tire size (front):.....245/70R19.5G
 Tire size (mid):.....
 Tire size (rear):.....245/70R19.5G

Some dimensions may be rounded and may vary from the actual dimensions

***Weights may be estimated calculations and may vary from the actual weight

- refer to the vehicle weight labels for actual weights***

Floorplans, features and specifications are subject to change without notice.