



**ENTEGRA**  
COACH®

## Accolade



Serial #: 1JSNECBU7M1HL8053  
 Model: 37L ACCOLADE MHC  
 VIN#: 4UZADVFC9MCOMM4873  
 Model Year: 2021 Dealer Name: MOTOR HOME SPECIALIST  
 5411 SOUTH I-35 WEST  
 ALVARADO, TX 76009  
 USA

**Manufacturer's Suggested Retail Price \$272,468.00**

TOTAL AMOUNT DOES NOT INCLUDE STATE AND LOCAL TAXES OR LICENSE FEES. THE PRICE SHOWN ABOVE MAY OR MAY NOT BE REPRESENTATIVE OF THE ACTUAL SELLING PRICE OF SIMILAR RECREATIONAL VEHICLES IN YOUR AREA.

### Standard Equipment

THE FOLLOWING ITEMS ARE STANDARD ON THIS MODEL AT NO EXTRA CHARGE

- Exterior**
- Freightliner® S2RV chassis
  - Cummins® ISB 6.7L 360 HP diesel engine with 800 ft.-lb. torque
  - Allison® 3000 MH automatic transmission
  - 185-amp alternator
  - G-rated highway tires- 275/80R22.5
  - Engine exhaust brake
  - 12,000-lb. rear hitch receiver with 7-pin plug
  - Dual 12V chassis batteries
  - 100 gal. fuel tank
  - 10 gal. DEF tank
  - TuffShell™ vacuum-bond laminated roof, floor and sidewalls
  - One-piece, seamless, crowned fiberglass roof
  - Alcoa® aluminum rims
  - Premium Sikkens full body paint
  - Deluxe heated, remote-controlled, sideview mirrors
  - Carpeted, full pass-through storage compartments with lockable slam latch doors
  - Bead-foam insulation (R-24 max roof, R-9 max floor and R-8 max walls)
  - Entrance door with industry's largest travel view window
  - Electric-powered entrance step
  - Slideout cover awnings
  - Exterior entertainment center with outside speakers, LED TV mounted on swivel bracket and single-disc DVD/CD/AM/FM radio
  - Onan® 8,000-watt Quiet Diesel generator and auto-gen start
  - 16.5 gal. propane tank (56 lb.)
  - (4) 6V AGM (220Ah) house batteries on slideout tray
  - Solar prep
  - Exterior utility center
  - Winterization drain system
  - 12V demand water pump
  - Black tank flush
  - Outside shower
  - Automatic hydraulic leveling jacks
  - Winegard® In-motion satellite dish
  - Thetford® Sani-Con Turbo Macerator system
  - LP quick-connect hookup
  - Flush-mount LED marker lights
  - Third brake light
  - Porch light

- Interior**
- Power driver and passenger seats
  - Power windows and door locks
  - A/C and cruise control
  - Tilt steering wheel
  - Auxiliary start switch
  - Privacy curtains for cab area
  - Driver and passenger air bags
  - Custom molded ABS surround in cab-over area
  - Firefly Multiplex system
  - 84 in. interior ceiling height with padded vinyl ceiling
  - Ball-bearing drawer guides
  - Raised-panel, hardwood cabinetry throughout
  - Deluxe hidden cabinet hinges
  - Furrion® stainless, recessed, gas cooktop with cast iron grill
  - Flip-up countertop extension (select models)
  - Decorative kitchen backsplash
  - LED lit solid surface kitchen countertops with integrated stainless steel sink and sink covers
  - Water filtration system
  - Entegra-exclusive easy operation legless dinette table
  - 2-point lap safety belts in all designated seating locations
  - Tile like vinyl flooring
  - High-intensity, recessed LED ceiling lights
  - 34,000 BTU auto-ignition furnace
  - Furrion® electric fireplace (N/A 37TS)
  - Blu-Ray™ with HDMI® connections to all televisions
  - Cable TV hookup with RG-6 coax and video selector switch
  - Porcelain toilet with foot flush
  - One-piece, fiberglass shower with glass door, skylight and light
  - LED lit stainless steel bathroom sink
  - Powered roof vent in bathroom with wall switch
  - Walk-around King-sized bed with bedspread and nightstands
  - Under-bed storage, bed lifts easily on gas struts (select models)
  - LED TV in bedroom
  - Large wardrobes
  - Overhead bunk with 750 lb. capacity
  - Bunks with industry-exclusive 300 lb. capacity each (37FS)
  - Smoke alarm
  - Carbon monoxide detector

- Customer Value Package**
- EZDRIVE™ PREMIER: Rear air suspension, heavy-duty rear stabilizer bar, full air brakes, SACHS shocks
  - Sony® infotainment center Apple CarPlay® and Andriod Auto™
  - One-piece, seamless, fiberglass front and rear caps
  - Automotive-bonded, panoramic window in front cap with power shade
  - Backup and sideview cameras
  - Dual-pane, tinted, safety-glass windows
  - 15,000 BTU A/C unit with heat pump and second 13,500 BTU A/C unit
  - 2,000-watt pure sine wave inverter
  - Power cord reel with 50-amp service
  - Electric patio awning with LED lights
  - 21 cu.ft. residential refrigerator with ice and water in door
  - Convection microwave
  - 10 gal. gas/electric water heater

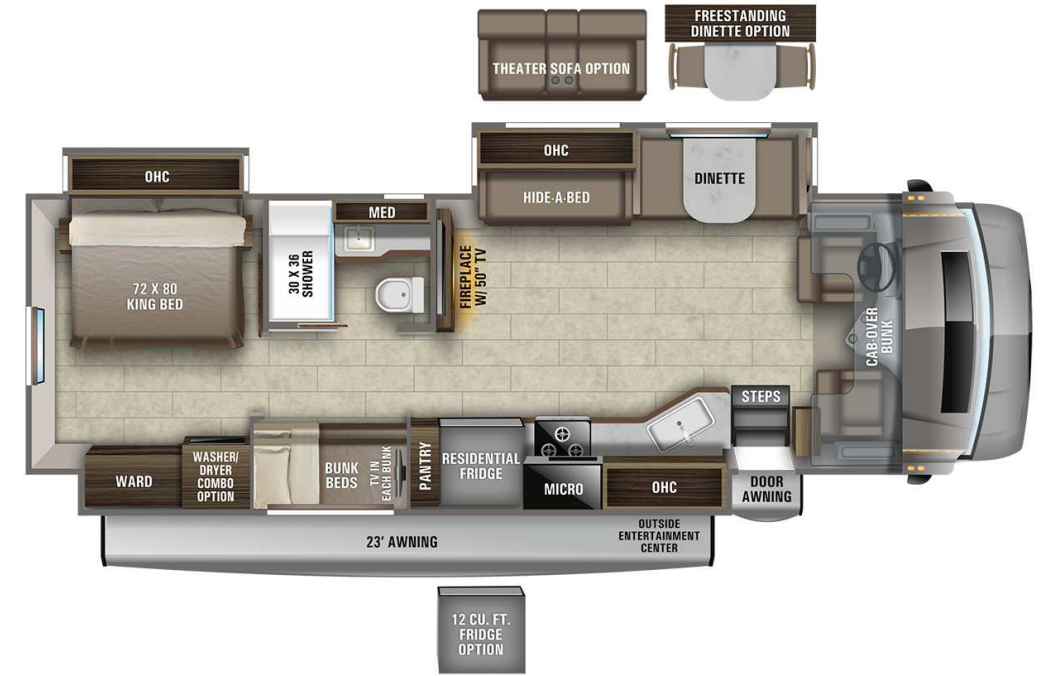
### Optional Equipment

OPTIONAL EQUIPMENT INSTALLED ON THIS VEHICLE BY MANUFACTURER

Base price	263,175.00
Crossville	n/c
Cobalt Full Paint	n/c
USA Standards	n/c
MXXTCDU 21 FR S2RV 29000	
279" 360	n/c
Customer Value Package	6,750.00
Residential Refrigerator	n/c
Washer/Dryer Combo	1,800.00
IN Motion DISH Satellite System	n/c
Booth Dinette	n/c
Theater Seating Sofa w/ Power	743.00

UNIT TOTAL **272,468.00**

DEALER INSTALLED OPTIONS



#### DIMENSIONS

Exterior height:.....160.00"  
 Exterior width:.....101.00"

#### CAPACITIES

Fresh water tank (gals.):...72.00  
 Gray water tank (gals.):...81.00  
 Black water/toilet tank (gals.):.....50.00  
 Propane (lbs.):.....83  
 Propane (gals.):.....19  
 Water heater (gals.):.....10.00

#### TIRES

Tire size (front):.....275/80R22.5G  
 Tire size (mid):.....  
 Tire size (rear):.....275/80R22.5G

\*\*\*Some dimensions may be rounded and may vary from the actual dimensions\*\*\*  
 \*\*\*Weights may be estimated calculations and may vary from the actual weight - refer to the vehicle weight labels for actual weights\*\*\*  
 Floorplans, features and specifications are subject to change without notice.