



ENTEGRA
COACH®

Aspire



Serial #: 1JSMEACV2L13R8085
Model: 44R ASPIRE MHA
VIN#:
Model Year: 2020 Dealer Name: MOTOR HOME SPECIALIST
5411 SOUTH I-35 WEST
ALVARADO, TX 76009
USA

Standard Equipment

THE FOLLOWING ITEMS ARE STANDARD ON THIS MODEL
AT NO EXTRA CHARGE

- 2- 1/2" exterior wall with welded tubular aluminum construction and high-gloss, gel-coat fiberglass
- 2" x 4" floor truss construction
- 3/4" 7-ply plywood main floor decking
- X-bridge frames welded into chassis frame
- Steel-reinforced front cap and windshield frame
- Insulation with reflective Flexfoil floor (R-33), roof (R-24), sidewalls (R-16), front and rear caps (R-22)
- One-piece fiberglass roof with 3/8" plywood decking and 4" arched aluminum roof truss
- Flush-mounted electric-powered slideout rooms with both VegaTouch and separate rocker switch controls
- Heated basement storage area
- Aluma-Tru superstructure construction on 12"-16" centers
- 15,000-BTU low profile A/Cs (3) with heat pumps and condensation drain system
- L16 AGM batteries (2), (6V/390 amp hrs. each)
- Black holding tank sprayer
- Macerator holding tank dump system with manual gate valves
- 50-amp power cord with electric reel
- Onan 10,000-watt diesel generator with auto gen start on slide-out tray
- Aqua-Hot 400 diesel hydronic water and heating system with in-floor heat throughout
- 3,000 watt pure sine wave inverter
- Premium surge protector with smart transfer switch
- Water hose with electric reel
- City and tank water filtration system
- Trutank ultrasonic tank monitoring system
- Winterizing drain system
- Slideout storage tray
- Daytime running lights
- Girard power entrance door awning with LED lights
- Power rear engine door with manual override
- 3M front protective film mask
- Samsung 40" 4K UHD Smart tv w/ JBL Bar Studio sound bar on TV bracket with extend, tilt and swivel arm
- LED low beam headlights, Halogen high beam headlights
- Lighted grab handle with keypad system
- Halogen fog lights
- LED marker lights, turn lights, accent lights and license plate light
- LED docking lights
- Chrome, heated, remote control Ramco side-view mirrors with integrated cameras
- Roof mounted Girard Vision dual pitched patio awnings with LED lights
- Full-width rear mudflap, with chrome "Aspire" nameplate
- Winegard Trav'ler satellite dish DIRECTV - standard w/ USA option
- Winegard Trav'ler satellite dish Shaw TV - standard w/ CSA option
- Exterior heated utility center with 5" Firefly system monitor panel
- Winegard Rayzar Z1 TV antenna
- Hehr frameless, dual-pane, tinted safety-glass windows
- Girard window shade awnings

- Two dual USB ports and 12v socket for charging
- Camera system with two side cameras and digital rear camera
- 6-way power, lumbar, Ultra-leather driver and passenger seats with integrated 3-point belt
- Powered flush stepwell cover
- Dual 9" touchscreen in-dash infotainment center with Rand McNally RV navigation, Bluetooth, Sirius XM, AM/FM tuner, integrated camera control
- Spartan Message Center with LCD display featuring: odometer, tachometer, fuel economy, fuel remaining, outside air temp., coolant temp., engine oil temp. and pressure, transmission temp., turbo boost pressure, air pressure, trip meter, speed and voltage
- Power adjustable brake and accelerator pedals
- Wrapped dash with molded side consoles
- Push button start
- VIP, tilt and telescoping steering wheel with integrated controls for cruise and wipers
- JBL premium audio sound system with speakers, amplifier and DVC sub-woofer
- Powered front sun visors and privacy shade
- Ultra-Vision one-piece wrap-around tinted windshield
- Bar area with beverage chiller, rain glass door on upper cabinet w/ LED accent lighting (44R)
- Central vacuum system
- 10" VegaTouch touch screen coach systems control panel
- Samsung HD Blu-ray player in living area
- Hand laid high gloss 8" x 48" porcelain tile floor
- Flexsteel furniture
- Aire-Secure travel locks for all pocket doors
- Premium recessed LED 12V lighting
- Manual solar day and blackout night shades
- Samsung 50" 4K UHD Smart TV
- Samsung 32" LED Slim 1080P Smart TV in front overhead
- Samsung HW-M360 sound bar with sub-woofer in living area
- Whirlpool stacked washer and dryer
- Induction cooktop with matching wood cover
- Dishwasher drawer with wood raised panel drawer front
- Solid surface countertops with stainless steel sink and dimmable LED accent lighting
- Whirlpool 1.9 cu. ft. convection microwave oven
- Whirlpool stainless steel residential refrigerator with ice maker and water dispenser
- Maxxair power vent exhaust fan
- Large deep drawer for waste basket with easy access trash chute (trash chute not available on 40P and 44R)
- King size gel memory foam mattress
- Motion activated LED light in wardrobe
- Ceiling fan
- Samsung Blu-ray player
- Nightstands with USB ports and solid surface tops
- JBL Studio sound bar
- Samsung 32" LED Slim 1080P Smart TV
- Solid surface countertops with integrated sink and dimmable LED accent lighting
- Marble patterned shower with skylight and clear glass shower door
- Maxxair power exhaust fan with intake
- Combination carbon monoxide detector and gas alarm
- Porch light and motion sensor security lights
- Security system with glass shatter sensors
- Smoke alarm

Optional Equipment

OPTIONAL EQUIPMENT INSTALLED ON THIS VEHICLE
BY MANUFACTURER

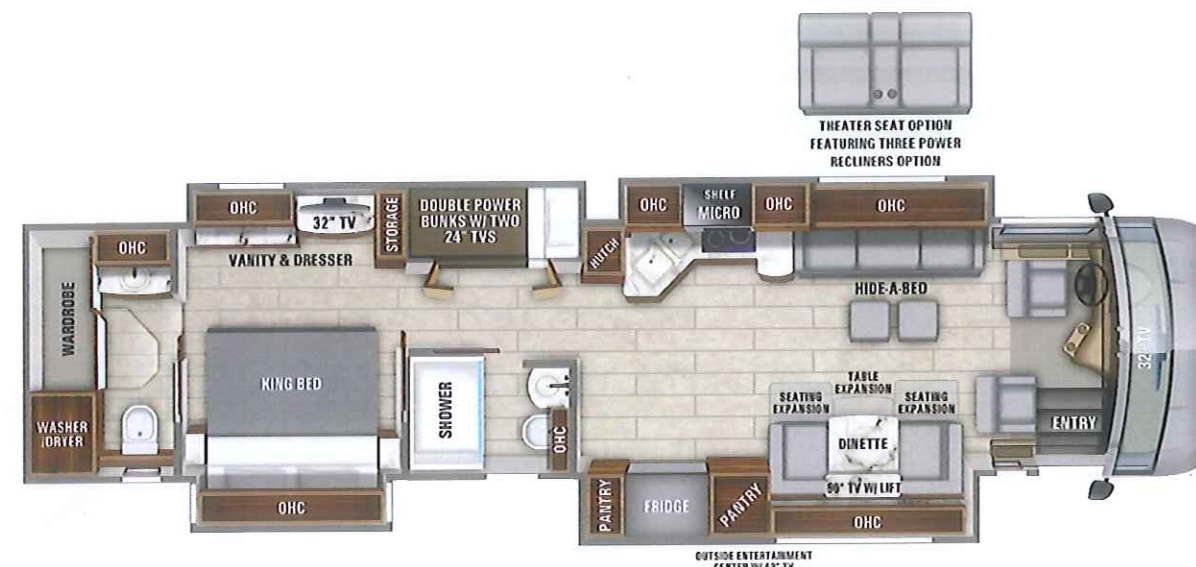
Base price	469,530.00
Cobblestone	n/c
Paint Iris	n/c
USA Standards	n/c
20 SP 49000 320" 450 TAG	n/c
LXM AXLE 2017 EMISSIONS	n/c
Stonewall Gray Cabinetry	4,493.00
Dishwasher Drawer	n/c
Trav'ler Direct TV	n/c
Satellite Dish	n/c
Dual Solar Panels	2,775.00
Wi-fi Extender with 4G	n/c
LTE	1,268.00
Power Locking Baggage	n/c
Door	1,493.00
Four Batteries	1,643.00
No Theater Seating Sofa	n/c
Sleepmade Gel Memory	n/c
Mattress	n/c

UNIT TOTAL 481,202.00

DEALER INSTALLED OPTIONS

Manufacturer's Suggested Retail Price \$481,202.00

TOTAL AMOUNT DOES NOT INCLUDE STATE AND LOCAL TAXES OR LICENSE FEES. THE PRICE SHOWN ABOVE MAY OR MAY NOT BE REPRESENTATIVE OF THE ACTUAL SELLING PRICE OF SIMILAR RECREATIONAL VEHICLES IN YOUR AREA.



Sleeps
5-8

DIMENSIONS

Exterior height:.....152.00"
Exterior width:.....101.00"

CAPACITIES

Fresh water tank (gals.):...100.00
Gray water tank (gals.):....62.00
Black water/toilet tank (gals.):.....41.00
Propane (lbs.):.....0
Propane (gals.):.....0
Water heater (gals.):.....0.00

SEATING & SLEEPING

King Bed.....72 X 80

TIRES

Tire size (front):.....315/80R22.5
Tire size (mid):.....295/80R22.5
Tire size (rear):.....295/80R22.5

Some dimensions may be rounded and may vary from the actual dimensions

***Weights may be estimated calculations and may vary from the actual weight

- refer to the vehicle weight labels for actual weights***

Floorplans, features and specifications are subject to change without notice.

2+3
YEAR | YEAR
LIMITED | STRUCTURAL
WARRANTY